

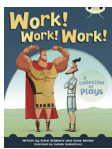
## Playscript Sets for KS2



## Library Services for Schools Serving Schools in Cumbria

These titles are available in sets of 7. A box consists of 20 books so please feel free to mix and match with other topics, guided reading sets or reading for pleasure themes.

### Historical Plays



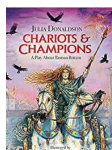
**Work! Work! Work. A Collection of Plays. Steve Barlow (Greeks) Lower KS2 Lime**

Hercules has been a very naughty boy. To make up for it, he's given a number of jobs to do by the Greek Gods. But these aren't the easy, go-down-the-shops or wash-the-dishes type of jobs. These are worse – a lot worse! Getting them done is going to mean work, work, work!



**Bombs and Blackberries - A World War Two Play by Julia Donaldson Upper KS2 Dark Blue**

Britain is at war and the Chivers' youngest children have to leave their parents to live in the countryside. They are delighted to be brought back home when it looks as though the Germans aren't going to invade after all. But the air-raid siren goes off and this time it's frighteningly real.. 29 speaking parts. Can also be used in small groups.



**Chariots and Champions - A Roman Play by Julia Donaldson Upper KS2 Dark Blue**

Arthur Godbold digs up a bronze head from a Suffolk river. As he puzzles over it, the dramatic story of the Roman invasion of Britain unfolds in front of his eyes. Emperor Claudius, British Queen Boudicca, Roman soldiers and British slave girls are all involved in this exciting story. 33 speaking parts. Can also be used in small groups.

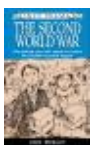


**Cruel Times - A Victorian Play by Kaye Umansky**

**Upper KS2 Dark Blue**

Sissy is doing her best as a kitchen maid to earn the little money on which her Ma and family depend. But when she is robbed by a gang of urchins they face destitution.. Until she meets Charles Dickens. 29 speaking parts. Can also be used in small groups.

(World War 2)



**The Second World War by Ann Webley**

**Upper KS2 Dark Blue**

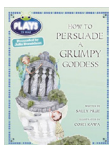
Experience life as a war-time evacuee, a land girl or a grocer. Discover how each character lived, the language they used and the problems they faced at each level of society. 10 speaking parts. Also suitable for a whole class.



### The Victorians by Ann Webley

Upper KS2 Dark Blue

Experience Victorian life as a parlour maid, a chimney sweep or a wealthy young girl. Discover how each character lived, the language they used and the problems they faced at each level of society. 10 speaking parts. Also suitable for a whole class.



### How to Persuade a Grumpy Goddess by Sally Prue (Romans)

Upper KS2 Dark Red

The Roman water goddess, Ancasta, is very hard to please. When the slaves find themselves in trouble for stealing, will she protect them from their masters? When they are all attacked by Celts, can the slaves persuade the grumpy goddess to save them?

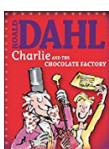


### Three Mistakes and a Monster (Greeks)

Upper KS2 Dark Red

High in the clouds of Mount Olympus, the bored Greek gods just don't know what to do with themselves. Meanwhile, down in Thebes, the savage Sphinx knows exactly what to do with anyone who can't solve her riddle.

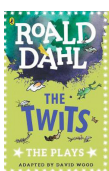
## Other Plays



### Charlie and the Chocolate Factory. R. Dahl.

Lower & Upper KS2 Dark Blue

Join Charlie Bucket in Willy Wonka's amazing chocolate factory. Here's your chance to play all your favourite characters in Roald Dahl's well-loved story. With tips about scenery, props and lighting, this play is easy to stage and there are lots of parts for everyone.



### The Twits by Roald Dahl – adapted by David Wood

Lower & Upper KS2 Grey

Play version of Dahl's tale about an obnoxious couple. There's a part to suit everyone and lots of useful ideas about costumes, props and sound effects. Make Mr Twit eat wormy spaghetti, stick a frog in Mrs Twit's bed or join in the cleverest prank of all - the great upside down trick. With notes on simple staging, props and costumes, the plays can be produced with the minimum of experience and resources.



### Fantastic Mr Fox by Roald Dahl – adapted by Sally Reid

Lower & Upper KS2 Grey

A stage adaptation of Dahl's popular story, in which clever Mr Fox outwits the three nasty farmers: Boggis. Bunce and Bean. An excellent adaptation by Sally Reid, with staging advice on props, lighting and scenery at the end of the book.