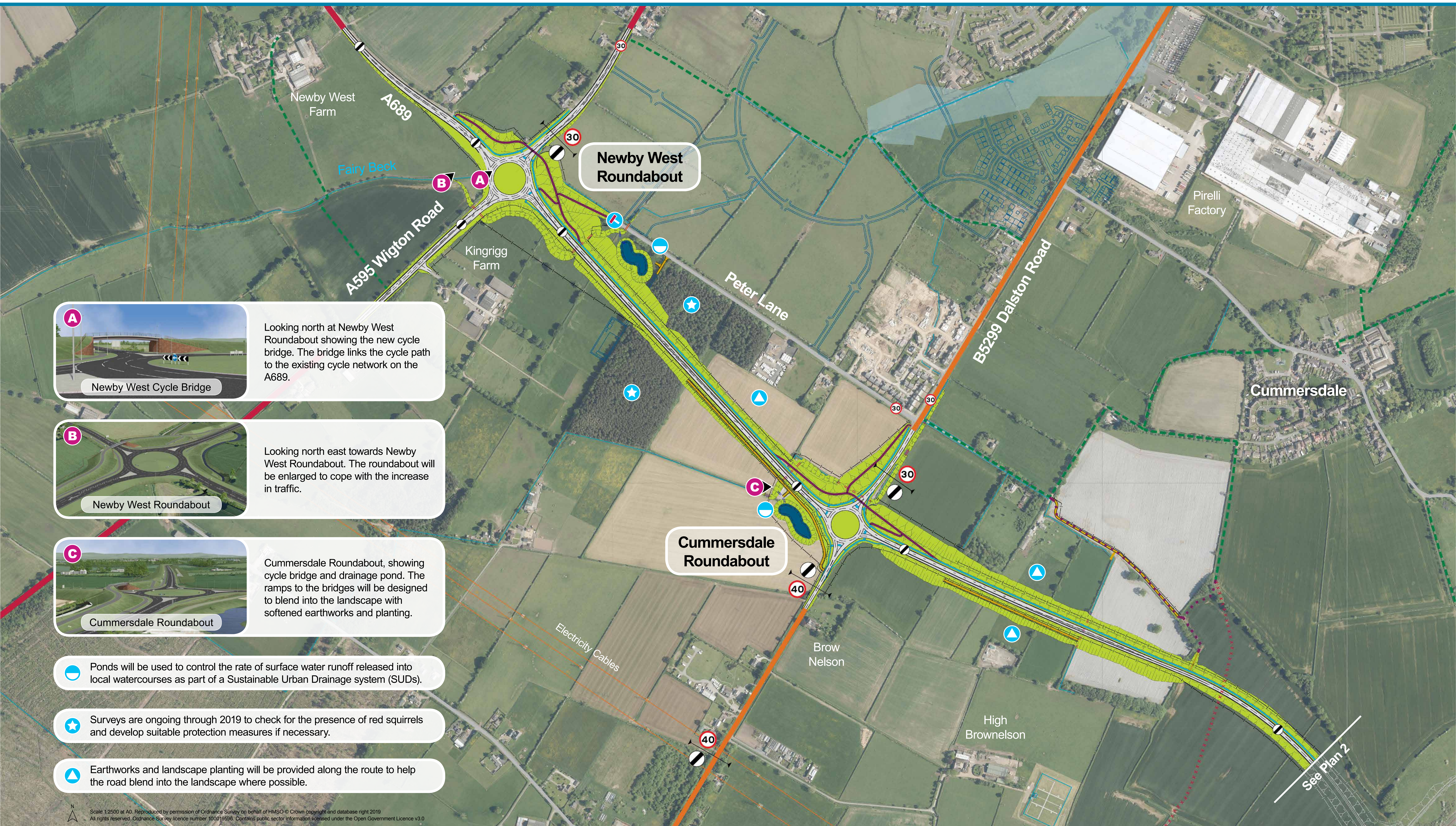


Carlisle Southern Link Road: Plan 1



Looking north at Newby West Roundabout showing the new cycle bridge. The bridge links the cycle path to the existing cycle network on the A689.



Looking north east towards Newby West Roundabout. The roundabout will be enlarged to cope with the increase in traffic.



Cummersdale Roundabout, showing cycle bridge and drainage pond. The ramps to the bridges will be designed to blend into the landscape with softened earthworks and planting.

Ponds will be used to control the rate of surface water runoff released into local watercourses as part of a Sustainable Urban Drainage system (SUDs).

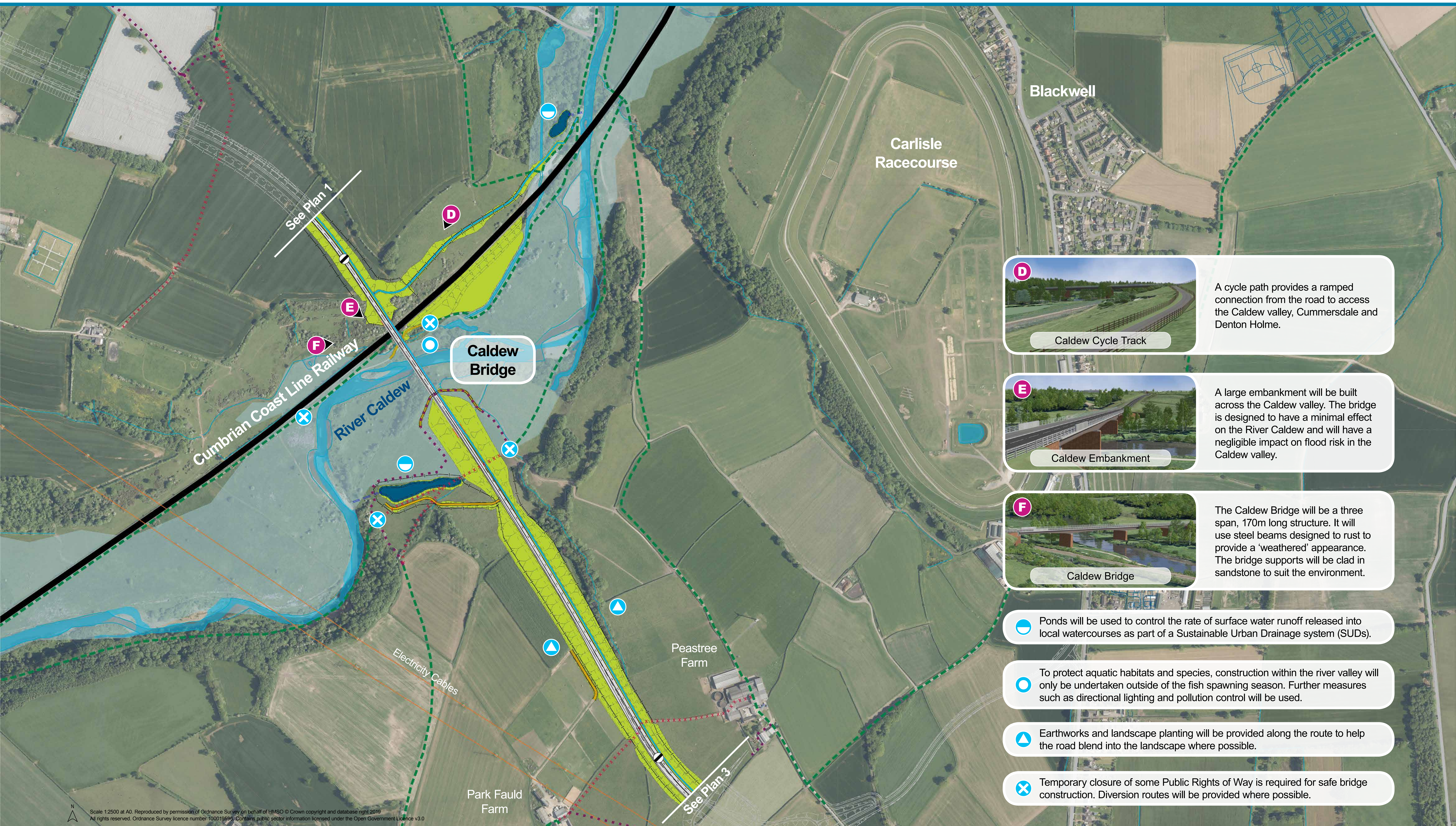
Surveys are ongoing through 2019 to check for the presence of red squirrels and develop suitable protection measures if necessary.

Earthworks and landscape planting will be provided along the route to help the road blend into the landscape where possible.

See Plan 2

Scale 1:2500 at A0. Reproduced by permission of Ordnance Survey on behalf of HMSO © Crown copyright and database right 2019. All rights reserved. Ordnance Survey licence number 100019596. Contains public sector information licensed under the Open Government Licence v3.0

Carlisle Southern Link Road: Plan 2



A cycle path provides a ramped connection from the road to access the Caldew valley, Cummersdale and Denton Holme.



A large embankment will be built across the Caldew valley. The bridge is designed to have a minimal effect on the River Caldew and will have a negligible impact on flood risk in the Caldew valley.



The Caldew Bridge will be a three span, 170m long structure. It will use steel beams designed to rust to provide a 'weathered' appearance. The bridge supports will be clad in sandstone to suit the environment.

Ponds will be used to control the rate of surface water runoff released into local watercourses as part of a Sustainable Urban Drainage system (SUDs).

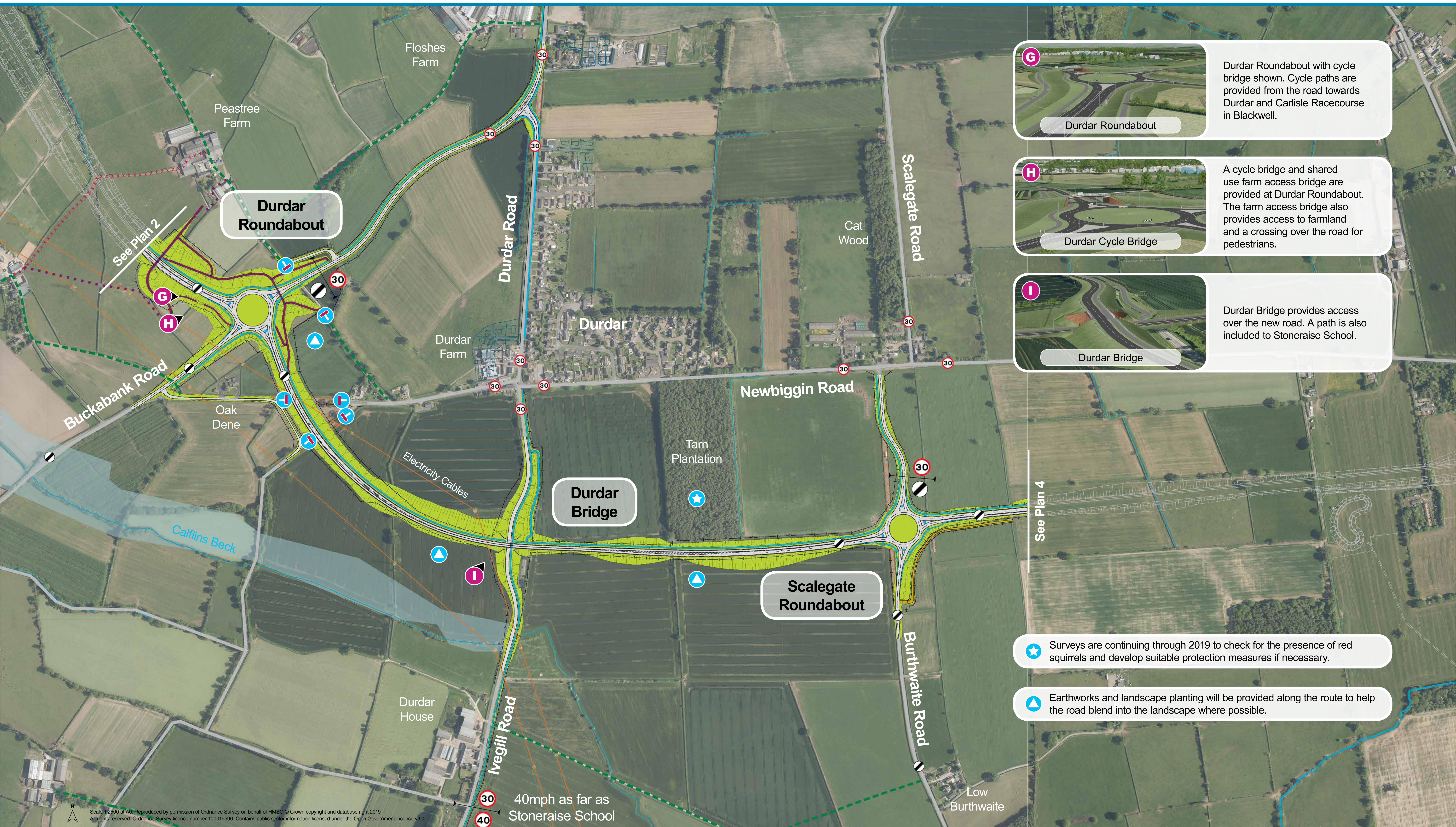
To protect aquatic habitats and species, construction within the river valley will only be undertaken outside of the fish spawning season. Further measures such as directional lighting and pollution control will be used.

Earthworks and landscape planting will be provided along the route to help the road blend into the landscape where possible.

Temporary closure of some Public Rights of Way is required for safe bridge construction. Diversion routes will be provided where possible.

Scale 1:2500 at A0. Reproduced by permission of Ordnance Survey on behalf of HMSO © Crown copyright and database right 2016. All rights reserved. Ordnance Survey licence number 100019595. Contains public sector information licensed under the Open Government Licence v3.0

Carlisle Southern Link Road: Plan 3



G

Durdar Roundabout

Durdar Roundabout with cycle bridge shown. Cycle paths are provided from the road towards Durdar and Carlisle Racecourse in Blackwell.

H

Durdar Cycle Bridge

A cycle bridge and shared use farm access bridge are provided at Durdar Roundabout. The farm access bridge also provides access to farmland and a crossing over the road for pedestrians.

I

Durdar Bridge

Durdar Bridge provides access over the new road. A path is also included to Stoneraise School.

★ Surveys are continuing through 2019 to check for the presence of red squirrels and develop suitable protection measures if necessary.

▲ Earthworks and landscape planting will be provided along the route to help the road blend into the landscape where possible.

Scale 1:2500 at A1. Reproduced by permission of Ordnance Survey on behalf of HMSO © Crown copyright and database right 2019. All rights reserved. Ordnance Survey licence number 100019596. Contains public sector information licensed under the Open Government Licence v3.0

Carlisle Southern Link Road: Plan 4



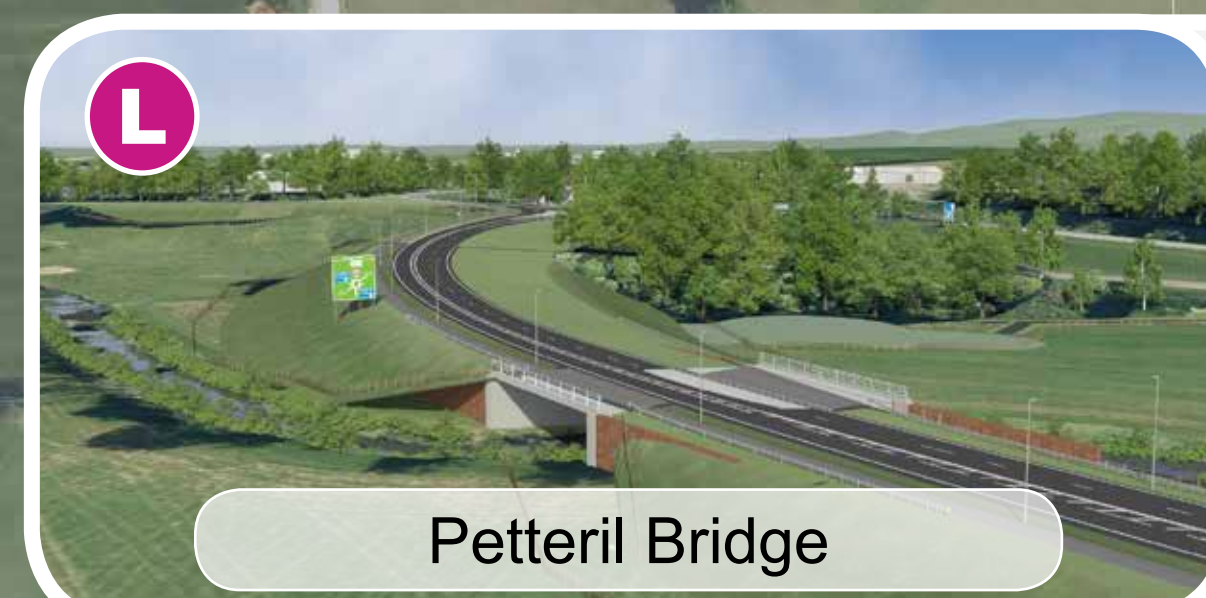
Brisco Roundabout

Brisco Roundabout with the proposed cycle bridge over the road. All the roundabouts will be lit by street lighting with typically 10m high columns.



Railway Bridge

A new bridge will be built over the West Coast Main Line railway. The road over the existing bridge will be stopped up and closed to the public.



Petteril Bridge

Looking east over the new Petteril Bridge, with the connection to M6 Junction 42 beyond. The bridge has been designed to minimise the impact on flood risk and watercourse capacity.

The road heading into Carlisle along the A6 will be reduced to one lane and a cycle path constructed to a new crossing point near the petrol station.



See Plan 3

Ponds will be used to control the rate of surface water runoff released into local watercourses as part of a Sustainable Urban Drainage system (SUDs).

To protect aquatic habitats and species, construction within the river valley will only be undertaken outside of the fish spawning season. Further measures such as directional lighting and pollution control will be used.

Temporary closure of some Public Rights of Way is required for safe bridge construction. Diversion routes will be provided where possible.

Scale 1:2500 at A0. Reproduced by permission of Ordnance Survey on behalf of HMSO © Crown copyright and database right 2019. All rights reserved. Ordnance Survey licence number 100019596. Contains public sector information licensed under the Open Government Licence v3.0

