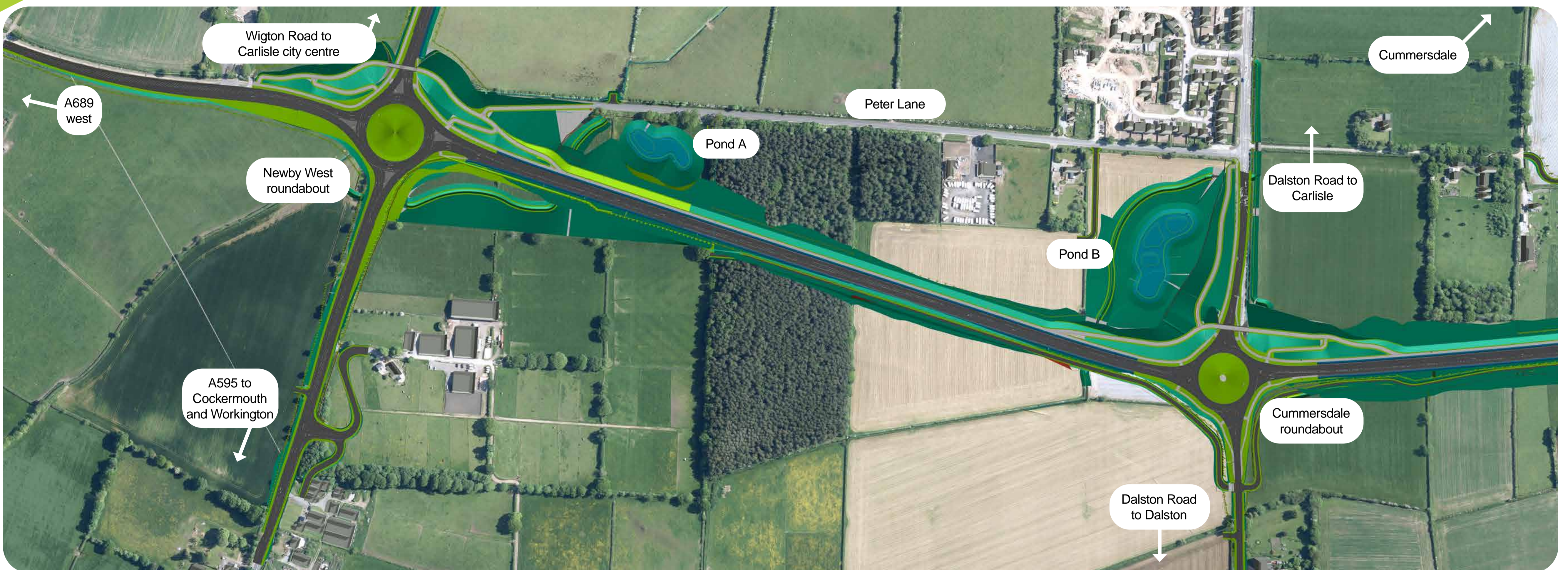


## Placemaking:

## Newby West to Cummersdale



### Newby West roundabout

The design ideas for the Newby West roundabout have been inspired by both the local landscape and the historic route of the Roman Road between Carlisle and Papcastle.

#### Landscape design ideas

- Large Scots Pine trees to reflect local coniferous woodland
- Bold drifts of ornamental grasses, herbaceous perennials and shrubs providing seasonal colour, texture and form
- Focus on providing plants that support our native birds and pollinating insects
- Ornamental meadow style planting around the outer edges



### What do YOU think about the ideas in this location?

Please let us know on the feedback form.



#### Artwork Ideas

- As the main route into the city from the A595 and West Cumbria, Newby West roundabout is one of the key gateway locations along the new road
- Sculptural landform on the roundabout could be designed to face the approach from the south west and become a recognised focal feature as you enter Carlisle
- Materials for sculpture could help to reflect the local landscape character and create a sense of identity, e.g. local sandstone, traditional brick and weathering steel (also used on the new bridge structures)
- A large transparent sculpture could provide a locational reference point and appear elegant in the landscape
- Use of strong pattern and form could depict the influence of Roman heritage in the area



### Cummersdale roundabout

The proposed design ideas for this roundabout are more simplistic and rural in character to provide contrast with the more formal designs on adjacent Newby West and Durdar roundabouts. There is also potential to create a mound on the roundabout here to help integrate it into the landscape.



#### Landscape design ideas

- Local sandstone could be used for a circular wall around the area of woodland planting for Cummersdale roundabout
- New native deciduous woodland planting to centre of roundabout to reflect local landscape style
- Similar simple style of roundabout (established trees shown in image above) with sandstone wall and broadleaf woodland

### What do YOU think about the ideas in this location?

Please let us know on the feedback form.



## Placemaking:

# Durdar Roundabout to Redcat Roundabout



### Durdar Roundabout

As a potential gateway into the new St Cuthbert's Garden Village, ideas for this roundabout have been inspired by the local landscape character through planting and artwork.

#### Landscape design ideas

- New native hedgerows planted in geometric patterns would provide structure within the more naturalistic, ornamental meadow - style planting
- Excellent resource for pollinating insects
- Large oak trees planted within the new hedgerows to provide instant impact



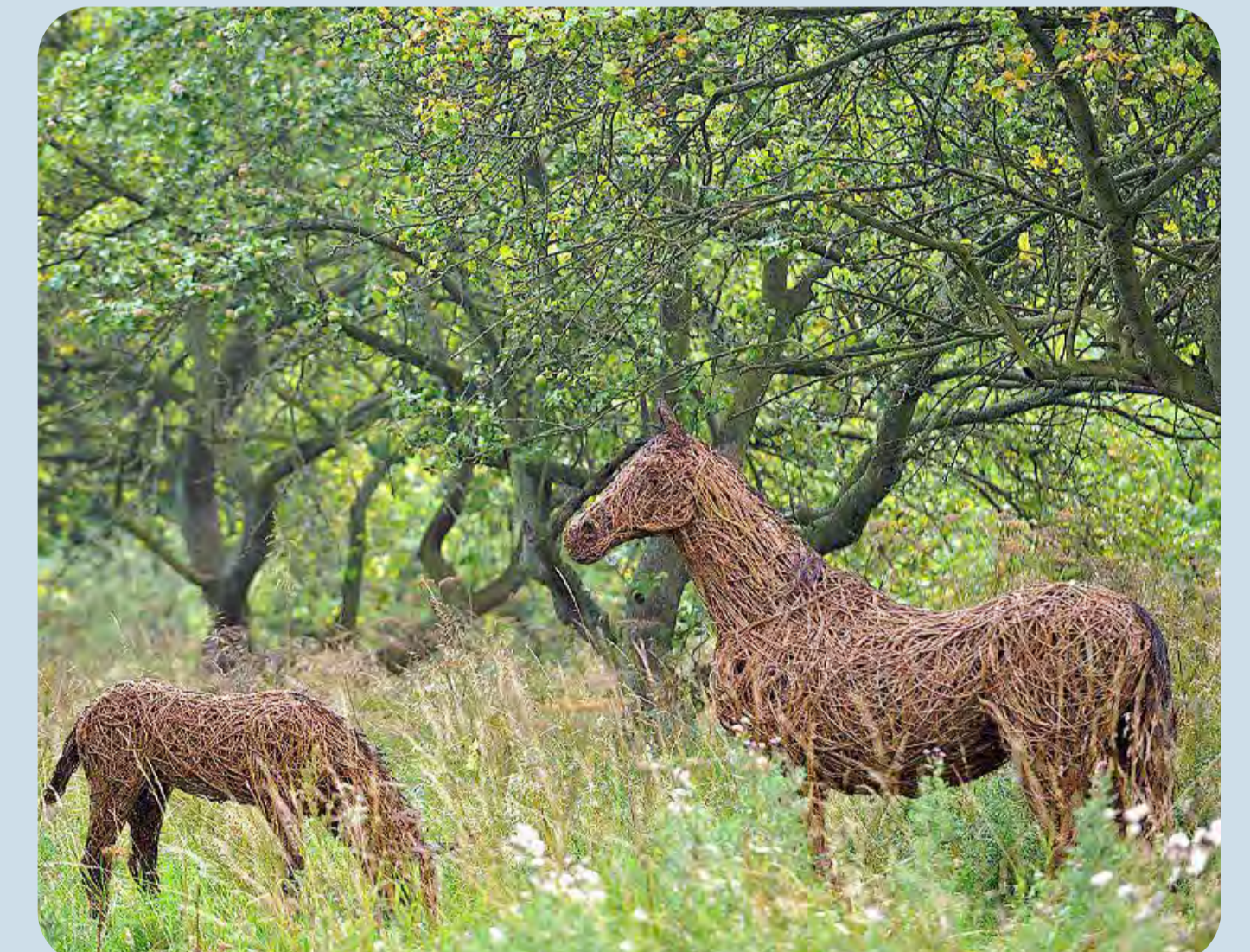
### What do YOU think about the ideas in this location?

Please let us know on the feedback form.



#### Artwork Ideas

- Inspiration for potential sculptures could come from the local Carlisle Racecourse, or;
- From the St Cuthbert's fossil beads and design principles for the development of St Cuthbert's Garden Village (suggested at previous consultation event)
- Examples of sculpture in metal and willow give a light, natural appearance and interesting texture



### Redcat Roundabout

The proposed design ideas for this roundabout are more simplistic and rural in character to provide contrast with the more formal designs on Durdar and Brisco roundabouts.

#### Landscape design ideas

- Potential to mound the roundabout here to add visual interest
- New native deciduous woodland planting in centre of roundabout



### What do YOU think about the ideas in this location?

Please let us know on the feedback form.



#### Artwork Ideas

- It was suggested at a previous consultation event that a sculpture could be inspired by the Lindisfarne Gospels

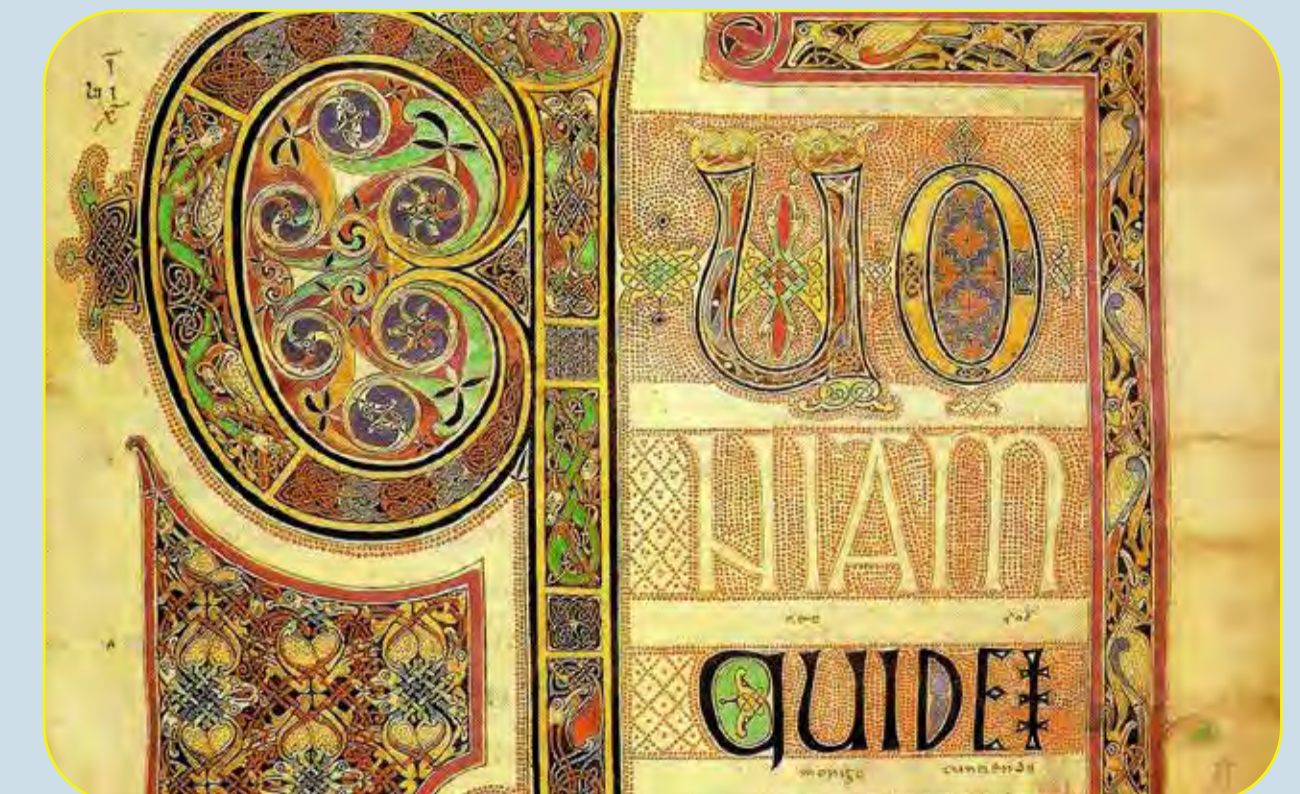


Image credits: David Stark Design on Twitter / www.pictorialmeadows.co.uk / http://nangleandniesen.ie/oak-tree / Google Street View / www.energylive.com / Shutterstock

Placemaking:

Brisco Roundabout



**Brisco roundabout**

As a potential gateway into the new St Cuthbert's Garden Village from the east, and as the first roundabout approaching the new road from the M6; ideas for this area focus on reflecting the local landscape character.

**Landscape design ideas**

- A more formal landscape design approach referencing historic parkland landscape and agricultural heritage of Brisco
- Sandstone walls, parkland landscape and beech trees
- Large beech and copper beech trees to provide a variety of seasonal colour and sense of maturity
- Ornamental meadow style planting to support pollinators



**What do YOU think about the ideas in this location?**



Please let us know on the feedback form.

**Artwork Ideas**

- A sculpture could make reference to the agricultural heritage of Brisco and adjacent Cumberland Show field. Examples here show how strips of metal, willow or wire could be used to create a transparent and light, yet powerful form of a bull
- Series of curved sandstone walls, similar to those at Brisco Hill and Woodside Park could be used to reflect the local use of stone in this area
- Previous consultation also noted a number of local features at St Mary's Church, Wreay that could inspire artwork, including:
  - Carved pine cones
  - The Fossil Window - weathered steel panelling sculpture with the fossil detail cut out or with coloured inset would reflect this
  - The font - a series of curved, brick walls referencing Brisco Brickworks could feature stone carved plaques depicting local flora and fauna



Image credits: <https://www.woodlandtrust.org.uk/> / <http://www.pictorialmeadows.co.uk>

## Placemaking: Caldew Valley

### Caldew Valley

The Caldew Valley is a well-used recreational route for walkers, cyclists and fisherman. Alongside its natural beauty, it is home to a diverse range of wildlife and has a fascinating history. The design ideas aim to enhance the sense of place and complement local landscape character.

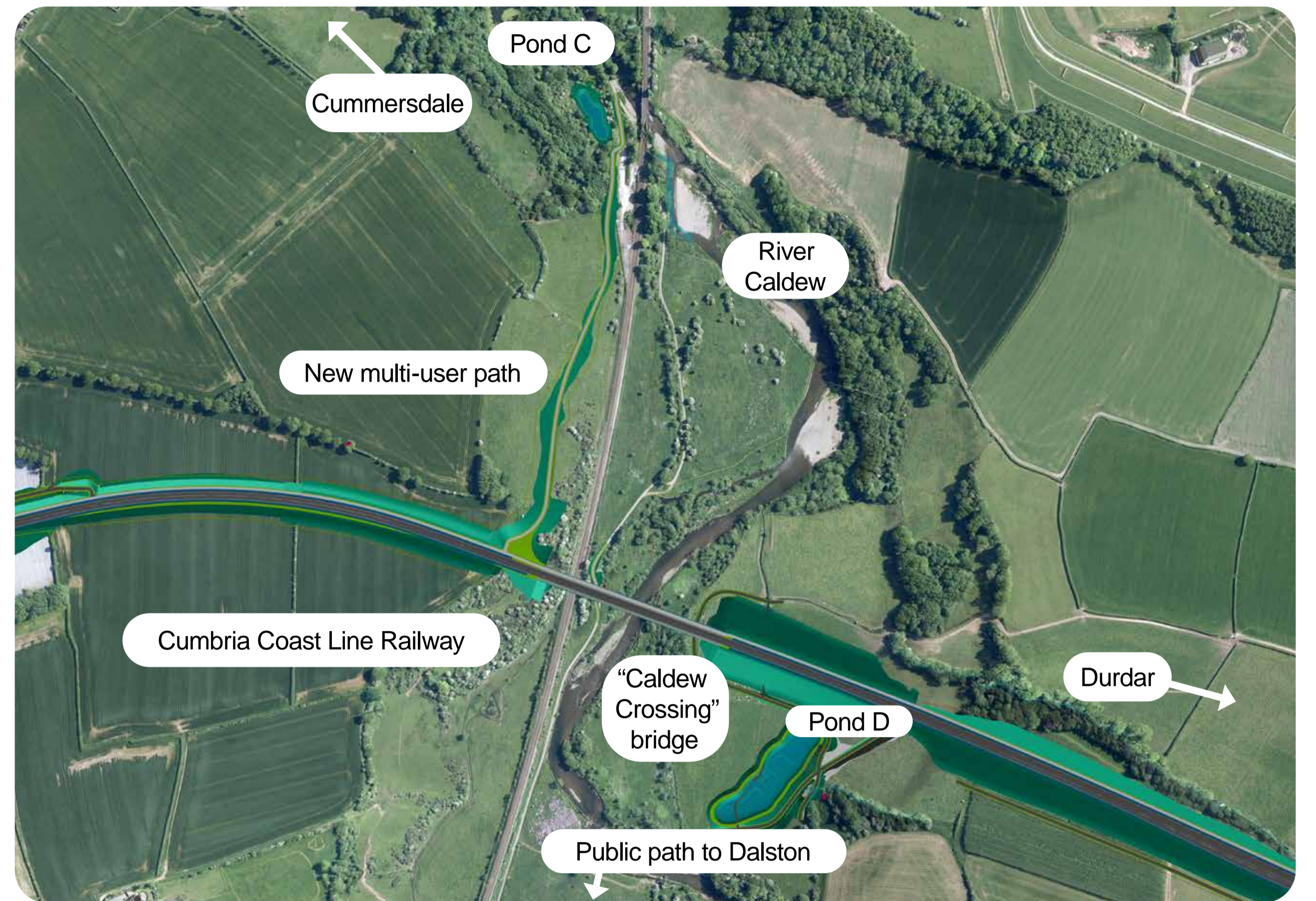
### Landscape design ideas

#### Valley Floor

- Simple, natural materials proposed for informal play, seating and information boards
- Natural stone boulders could provide informal seating/ play features alongside the Caldew Public Right Of Way
- Felled timber could create informal play features
- Log piles or other features to encourage wildlife

### What do YOU think about the ideas in this location?

Please let us know on the feedback form.



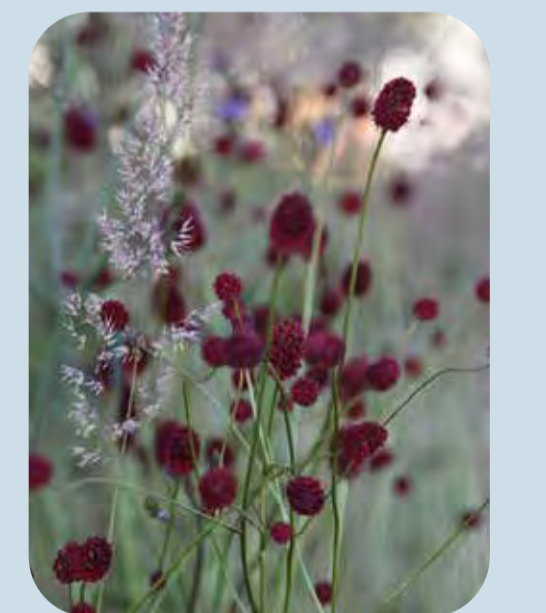
### Landscape design ideas

#### Multi-user path

- Path starts to the west of the new bridge and continues northwards towards Cummersdale Mill
- A small area at the top of this path, next to the Caldew Crossing could be designed with ornamental planting
- Planting design ideas to complement the natural colours, textures and forms of the existing planting around the River Caldew
- Rounded natural stone boulders could provide a reference to the river valley
- Naturalistic ornamental grasses to provide visual interest

### What do YOU think about the ideas in this location?

Please let us know on the feedback form.



### Artwork Ideas

- Public art could enhance the sense of place and complement existing and new recreational routes
- Contemporary sculptural signage to celebrate the rich cultural heritage of this area, including the Cummersdale Mill
- Contemporary graphics within proposed signage could provide reference to the importance of the former Cummersdale Station
- Using patterns inspired by the old print works or Stead McAlpin fabrics could be an effective way of using an artwork strategy to celebrate the rich cultural heritage of this area
- In response to previous public feedback:
  - Contemporary flood level markers could reference historic flood levels
  - A sculptural vantage viewpoint for the Caldew Crossing. By aligning a vantage point with the western end of the old rifle range, the public could reflect on the change in this view over the river with the new bridge in position

### What do YOU think about the ideas in this location?

Please let us know on the feedback form.



Image credits: <http://www.cb-arts.co.uk/> / [www.linkedin.com/company/steadmcgalpinandcold/](http://www.linkedin.com/company/steadmcgalpinandcold/) / [www.differenta.co.uk/](http://www.differenta.co.uk/) / <https://broadbentstudio.com/> / [www.mustdobrisbane.com/](http://www.mustdobrisbane.com/) / [www.spottedbylocals.com/](http://www.spottedbylocals.com/) / <https://vvasafring.com/> / <https://cb-arts.co.uk/portfolio/> / <https://maps.nls.uk/geo/explore/scene-by-side/#zoom=15&lat=54.86248&lon=-2.95042&layers=1&right=ESRIWorld>

## Placemaking:

# Sustainable Drainage Ponds

### Introduction

- Total of eight ponds that store surface water run off from the road and improve the quality of water entering watercourses
- Four of the ponds have been designed to provide recreational spaces that promote biodiversity and health and wellbeing, taking into account safety concerns
- Opportunity to involve local schools and youth groups with planting and learning about local wildlife

### Planting design

#### Pond A (closest to Newby West Roundabout) and Pond B (closest to Cummersdale Roundabout):

- Mixed (coniferous and deciduous) native woodland
- Open areas of species rich grassland
- Areas of shrub planting
- Aquatic planting around the edges of the ponds themselves

#### Pond D (in the Caldew Valley)

- Scrub and scattered trees planted to the west, helping to connect with the broadleaf woodland vegetation that will be planted on the Caldew Crossing embankments
- Around the pond itself, there are some open areas of species rich grassland,
- Bands of shrub planting
- Aquatic planting

#### Pond G (to the west of the River Petteril)

- Surrounded by new native broadleaf woodland planting
- Open areas of species rich grassland
- Shrub planting
- Aquatic planting around the pond

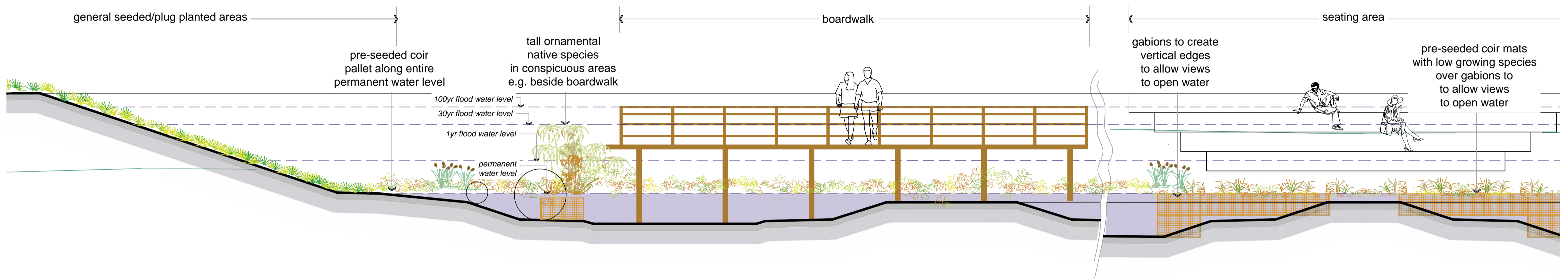
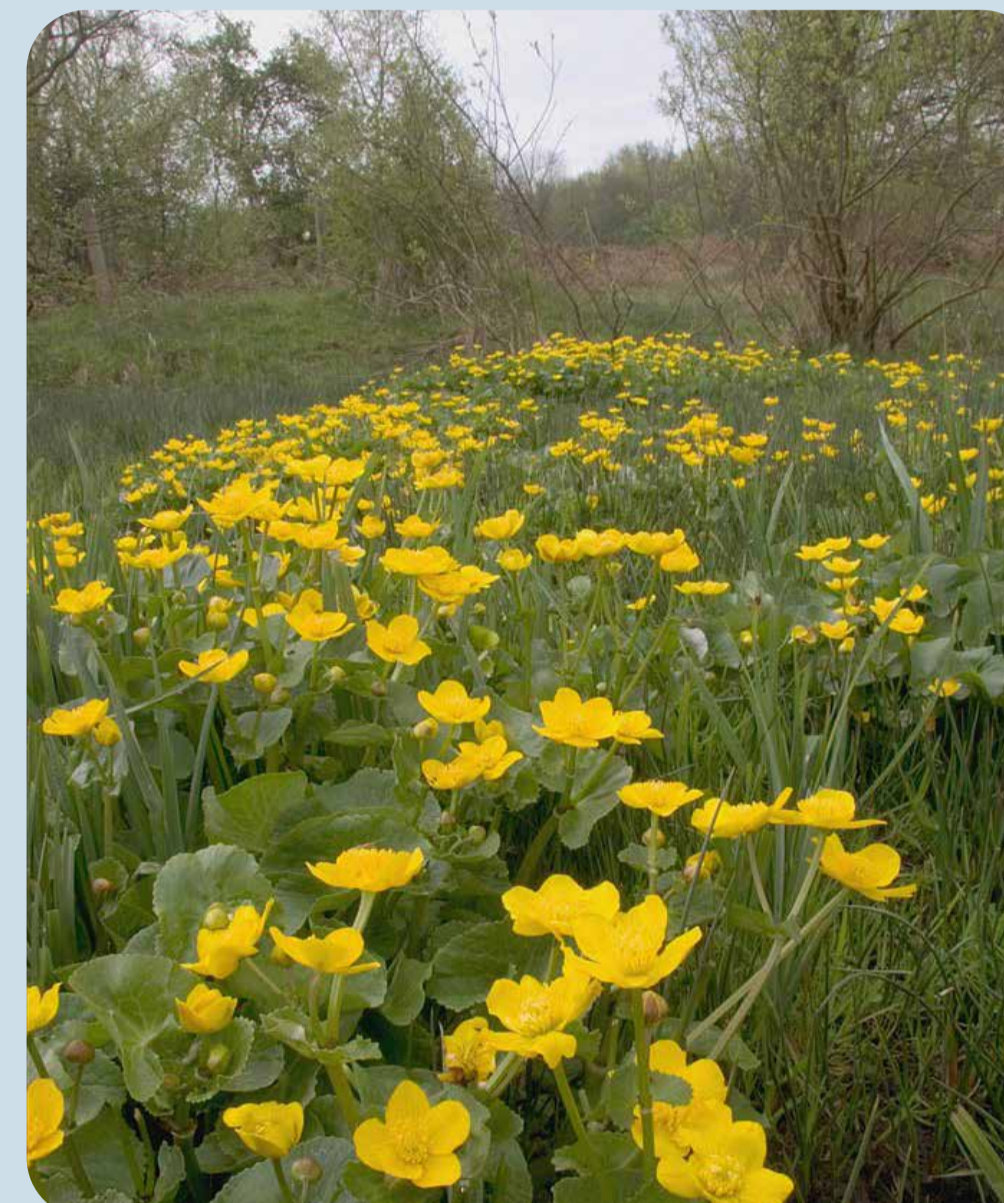


Image credits: www.wildseed.co.uk and www.salixr.com

### Landscape design

- Variety of native aquatic species
- Planting to promote wildlife and provide more amenity value in key areas
- Furniture and materials chosen for durability and to complement the natural surroundings
- A circular, 2m wide informal path around the four ponds which have public access
- Boardwalk idea to allow public access over Pond D
- Fitness trail equipment to promote good health and well-being for a variety of ages and abilities



What do YOU think about the ideas for sustainable drainage ponds?

Please let us know on the feedback form.



## Programme dates

	2021		2022				2023				2024	
	AUTUMN	WINTER	SPRING	SUMMER	AUTUMN	WINTER	SPRING	SUMMER	AUTUMN	WINTER	SPRING	
Enabling Works (site clearance, hedgerow translocation, boundary temporary fencing). <b>Commences Winter 2021</b>		█	█	█								
Commencement of main works. <b>Commences Spring 2022</b>			█									
Compounds and haul roads. <b>Commences Spring 2022</b>			█	█								
Modifications to A595 Newby West Roundabout. <b>Commences Spring 2022</b>			█	█	█							
Caldew Crossing. <b>Commences Spring 2022</b>			█	█	█	█	█					
Cummersdale Roundabout (Dalston Road). <b>Commences Summer 2022</b>				█	█	█	█					
Durdar Roundabout and link road. <b>Commences Autumn 2022</b>					█	█	█	█				
Construction of road sections. <b>Commences Spring 2023</b>							█	█	█	█		
Landscaping. <b>Commences Spring 2024</b>											█	
<b>COMPLETION, ROAD OPEN</b> <b>Spring 2024</b>											█	