



Source: Forest of Bowland AONB. Landscape Character Assessment, 2009

Contents

Landscape Character Area A1: Ward's Stone	1
Landscape Character Area A2: Brown Berry Plain and Holdron Moss	1
Landscape Character Area A4: White Hill	2
Landscape Character Area B1: Mallowdale	3
Landscape Character Area B2: Abbeystead	3
Landscape Character Area B5: Bleasdale	4
Landscape Character Area B8: Croasdale to Lythe	4
Landscape Character Area B9: Goodber Common	5
Landscape Character Area C1: Caton Moor	6
Landscape Character Area C8: Birk Bank	6
Landscape Character Area D1: Caton Moor	8
Landscape Character Area D2: Tatham	8
Landscape Character Area D4: Hare Appletree	9
Landscape Character Area D6: Nicky Nook	9
Landscape Character Area D10: Bleasdale	9
Landscape Character Area D13: Park House	10
Landscape Character Area D14: Abbeystead	10
Landscape Character Area E2: Quernmore	11
Landscape Character Area E3: Forest of Mewith	11
Landscape Character Area E5: Bleasdale	12
Landscape Character Area F1: Calder Vale and Brock Valley	13
Landscape Character Area F4: Caton	13
Landscape Character Area G1: Wyresdale	15
Landscape Character Area I1: Littledale	16
Landscape Character Area I2: Roeburndale	16
Landscape Character Area I3: Hindburndale	17
Landscape Character Area I5: Over Wyresdale	17
Landscape Character Area J1:Lune	18
Landscape Character Area K1: Gressingham	19
Landscape Character Area K2: Lower Tatham	19
Landscape Character Area N1: Quernmore	21

Forest of Bowland AONB Landscape Character			
Character Type A: Moorland Plateaux			
Overview	There are five occurrences of the Moorland Plateaux Landscape Character Type (LCT) within the Study Area. Four of these are situated towards the centre of the area, forming part of the central upland core.		
Key characteristics	<ul style="list-style-type: none">Some moorland summits are strewn with gritstone boulders;Strong sense of elevation with vast, expansive skies and uninterrupted views;Colours tend to be muted throughout the year;Land cover is predominantly blanket bog or heather moorland and trees are generally absent.		
Overall sensitivity in relation to vertical structures	<ul style="list-style-type: none">very high visual sensitivity;Large-scale renewable energy development would break up the uncluttered skylines and key views and erode the open and undeveloped character of the area;As a result, overall capacity to accommodate change, without compromising the key characteristics of this Landscape Character Type is considered to be very limited.		
Guidance in relation to vertical structures	<ul style="list-style-type: none">The uncluttered skylines and general absence of tall built structures should be maintained; as should the feeling of remoteness and tranquillity. The impact of human activity should be minimised;Protect skylines and key views to and from the area from tall, vertical and large-scale developments that may erode the open and undeveloped character of the area.		
Landscape Character Area A1: Ward's Stone			
Sensitivities in relation to vertical structures	<ul style="list-style-type: none">Strong sense of isolation and tranquillity within this predominantly open landscape;Dramatic, panoramic, long-distance open views northwards towards the purple-blue backdrop of fells within the Lake District and eastwards towards the three dramatic peaks of the Yorkshire Dales (Ingleborough, Pen Y Ghent and Whernside);The wind turbines on Caton Moor are a visible vertical landscape feature within middle distance views northwards;Strong sense of openness, with dramatic, dominant ever-changing skies and far reaching skylines and horizons;This area Forms the backdrop to the view of the Forest of Bowland AONB from the M6 corridor to the west.		
Ward's Stone Area FOB-A1	Large-scale	Medium-scale	Small-scale
Sensitivity to vertical infrastructure	Great	Great	Great
Magnitude of change	Small	Small	Small
Significance of effect	Intermediate	Intermediate	Intermediate
Landscape Character Area A2: Brown Berry Plain and Holdron Moss			
Sensitivities in relation to vertical structures	<ul style="list-style-type: none">Dramatic, long distance, open views across the adjacent Unenclosed Moorland Hills (B) and Moorland Fringe, Undulating Lowland Farmland with Wooded Brooks (F) and parkland (G) Landscape Character Types;A windswept, bleak landscape, which is strongly affected by changing weather and light patterns;Large areas of blanket bog and heath cloak the rounded fells and stretch far into the distance within views across the area.		

Cumulative Impacts of Vertical Infrastructure

Brown Berry Plain and Holdron Moss Area FOB-A2	Large-scale	Medium-scale	Small-scale
Sensitivity to vertical infrastructure	Great	Great	Great
Magnitude of change	Small	Small	Small
Significance of effect	Intermediate	Intermediate	Intermediate
Landscape Character Area A4: White Hill			
Sensitivities in relation to vertical structures	<ul style="list-style-type: none"> • Three stone towers on White Hill provide recognisable landmarks; • Strong sense of isolation, tranquillity and wildness within this landscape; • Gritstone boulders and rocky outcrops are landscape features; • Dramatic views into the Croasdale and Whitendale river valleys within the adjacent Moorland Hills (B) Landscape Character Type. 		
White Hill White Hill Area FOB-A4	Large-scale	Medium-scale	Small-scale
Sensitivity to vertical infrastructure	Great	Great	Great
Magnitude of change	Small	Small	Small
Significance of effect	Intermediate	Intermediate	Intermediate

Forest of Bowland AONB Landscape Character			
Character Type B: Unenclosed Moorland Hills			
Overview	The Unenclosed Moorland Hills Landscape Character Type is predominantly situated within the north-west and north-east of the Study Area, adjacent to the higher Moorland Plateaux Landscape Character Type (A). This type also occurs on the Pendle Hill outlier to the south. The outer or lower edges of the Unenclosed Moorland Hills are generally adjacent to Moorland Fringe (D) or Wooded Rural Valleys (I) Landscape Character Types.		
Key characteristics	<ul style="list-style-type: none">• Dramatic cloughs or valleys are incised into the hillsides and often contain fast flowing streams• Open and exposed character, with a strong sense of remoteness and tranquillity• Woodland on the clough or valley sides• Stone walls and fences are occasional features, but do not dominate landscape pattern		
Overall sensitivity in relation to vertical structures	<ul style="list-style-type: none">• Very high visual sensitivity overall as a result of the strong sense of openness and generally uninterrupted skylines, coupled with strong inter-visibility with adjacent Landscape Character Types;• This Landscape Character Type also forms a striking backdrop to views from adjacent landscapes;• strong sense of remoteness and tranquillity throughout;• overall capacity to accommodate change, without compromising the key characteristics of this Landscape Character Type is considered to be very limited.		
Guidance in relation to vertical structures	<ul style="list-style-type: none">• Protect skylines and key views to and from the area from tall, vertical and large-scale developments that may erode the open and undeveloped character of the area;• Maintain the sense of openness;• Maintain the strong sense of tranquillity and remoteness through careful planning of visitor access.		
Landscape Character Area B1: Mallowdale			
Sensitivities in relation to vertical structures	<ul style="list-style-type: none">• Panoramic, open views westwards to the Furness Peninsula beyond Morecambe Bay;• The eastern half of the area includes distinctive hill profiles (such as Haylot and Mallowdale), which contrasts with large expanse of open ground in the western half of the area, which slopes downwards to the north;• Ward's Stone (within the Moorland Plateaux Landscape Character Type) forms the backdrop within views southwards;• The open landscape creates a sense of wildness, remoteness and space, which is further strengthened by the enormity and dominance of sky in these large scale landscapes.		
Mallowdale Area FOB-B1	Large-scale	Medium-scale	Small-scale
Sensitivity to vertical infrastructure	Great	Great	Great
Magnitude of change	Small	Small	Small
Significance of effect	Intermediate	Intermediate	Intermediate
Landscape Character Area B2: Abbeystead			
Sensitivities in relation to	<ul style="list-style-type: none">• Open views across Over Wyresdale and the M6 corridor towards Lancaster from the western edge of this area (Harrisend Fell):		

Cumulative Impacts of Vertical Infrastructure

vertical structures	<ul style="list-style-type: none"> Ashton Memorial (within Lancaster) is also a key landmark within panoramic, open views westwards from Hare Appletree Fell, which encompass Undulating Lowland Farmland within the foreground, set against a backdrop of Morecambe Bay and Black Combe (within the Lake District National Park); Landmark Jubilee Tower (which is built from stone and square in shape) provides a viewing platform for panoramic views westwards towards Morecambe Bay and eastwards towards the Bowland Fells. 		
Abbeystead Area FOB-B2	Large-scale	Medium-scale	Small-scale
Sensitivity to vertical infrastructure	Great	Great	Great
Magnitude of change	Small	Small	Small
Significance of effect	Intermediate	Intermediate	Intermediate
Landscape Character Area B5: Bleasdale			
Sensitivities in relation to vertical structures	<ul style="list-style-type: none"> Fast-flowing water over boulders and rocks within the higher reaches of the Calder Valley introduces sound and movement to this landscape which has an otherwise strong sense of remoteness and tranquillity; Open views northwards to the imposing form of Clougha Pike on the horizon, from Stake House Fell; Panoramic, open views westwards across Grizedale Lea reservoir (in the middleground) across the Fylde Plain towards Morecambe Bay; Strong sense of openness, with dramatic, dominant ever-changing skies and far reaching skylines and horizons. 		
Bleasdale Area FOB-B5	Large-scale	Medium-scale	Small-scale
Sensitivity to vertical infrastructure	Great	Great	Great
Magnitude of change	Small	Medium	Small
Significance of effect	Intermediate	Significant	Intermediate
Landscape Character Area B8: Croasdale to Lythe			
	<ul style="list-style-type: none"> Panoramic, open views northwards towards the dramatic skyline profile of the Yorkshire Dales from Whitray Fell contributes to recognisable sense of place; Very strong sense of remoteness and tranquillity throughout most of this area; The Great Stone of Fourstones, a large glacial erratic, has steps along its side and provides dramatic, panoramic open views towards the Lakeland Fells to the northwest, across the Fylde Plain and Morecambe Bay to the west and the Bowland Fells to the east; Ingleborough and Pen Y Ghent (within the Yorkshire Dales) provide the backdrop to panoramic, open views north and eastwards from Tatham Fells; Strong sense of openness, with dramatic, dominant ever-changing skies and far reaching skylines and horizons. 		
Croasdale to Lythe Area FOB-B8	Large-scale	Medium-scale	Small-scale
Sensitivity to vertical	Great	Great	Great

Appendix 1: Landscape Character Tables

infrastructure			
Magnitude of change	Small	Small	Small
Significance of effect	Intermediate	Intermediate	Intermediate
Landscape Character Area B9: Goodber Common			
	<ul style="list-style-type: none"> • Strong sense of openness throughout this area; • Dramatic, panoramic views northwards towards the distinctive profile of Ingleborough (within the Yorkshire Dales) from Summergill and Goodber Fells; • Strong sense of openness, with dramatic, dominant ever-changing skies and far reaching skylines and horizons. 		
Goodber Common Area FOB-B9	Large-scale	Medium-scale	Small-scale
Sensitivity to vertical infrastructure	High	High	High
Magnitude of change	None	Small	Small
Significance of effect	-	Intermediate	Intermediate

Forest of Bowland AONB Landscape Character			
Character Type C: Enclosed Moorland Hills			
Overview	The Enclosed Moorland Hills Landscape Character Type occurs within the north and south of the Study Area and also on the Pendle Hill outlier.		
Key characteristics	<ul style="list-style-type: none">• Open and exposed character;• Strong sense of elevation with vast, expansive skies and uninterrupted views;• Dry stone walls of roughly hewn blocks;• Tree cover is generally limited to remnant clough woodland.		
Overall sensitivity in relation to vertical structures	<ul style="list-style-type: none">• Large-scale renewable energy development would break up the uncluttered skylines and key views and erode the open and undeveloped character of the area;• The Unenclosed Moorland Hills Landscape Character Type is considered to have very high visual sensitivity overall, as a result of the strong sense of openness and generally uninterrupted skylines, coupled with strong intervisibility with adjacent Landscape Character Types;• This Landscape Character Type also forms a striking backdrop to views from adjacent landscapes;• a strong sense of remoteness and tranquillity throughout;• As a result, overall capacity to accommodate change, without compromising the key characteristics of this Landscape Character Type is considered to be very limited.		
Guidance in relation to vertical structures	<ul style="list-style-type: none">• Protect skylines and key views to and from the area from tall, vertical and large-scale developments that may erode the open and undeveloped character of the area;• Maintain the sense of openness.		
Landscape Character Area C1: Caton Moor			
Sensitivities in relation to vertical structures	<ul style="list-style-type: none">• Panoramic, open views northwards across the broad floodplain of the Lune Valley contribute to recognisable sense of place;• Caton Moor windfarm is a dominant landscape feature which introduces a source of noise and movement to the landscape and is a visible landmark within views to the area from several surrounding Landscape Character Types and areas;• Dramatic, panoramic, open views north and westwards across the Fylde Plain and Morecambe Bay;• Sense of remoteness, despite the presence of the windfarm.		
Caton Moor Area FOB-C1	Large-scale	Medium-scale	Small-scale
Sensitivity to vertical infrastructure	High	High	High
Magnitude of change	Small	Small	Small
Significance of effect	Intermediate	Intermediate	Intermediate
Landscape Character Area C8: Birk Bank			
Sensitivities in relation to vertical structures	<ul style="list-style-type: none">• A textured landscape, resulting from the gritstone outcrops and rocks which punctuate the smooth heather moorland;• Birk Bank disused quarries are striking landscape features;• The rugged profile of rocky outcrops on Clougha Pike provide a skyline backdrop to views from the area;• Low, deciduous trees along Little Windy Clough are also recognisable landscape features;• Quernmore church, which is nestled against a backdrop of pastoral fields,		

Appendix 1: Landscape Character Tables

	delineated by stone walls (within the adjacent Undulating Lowland Farmland Landscape Character Type) is a visible landmark within views westwards.		
Birk Bank Area FOB-C8	Large-scale	Medium-scale	Small-scale
Sensitivity to vertical infrastructure	Great	Great	Great
Magnitude of change	Small	Medium	Medium
Significance of effect	Intermediate	Significant	Significant

Forest of Bowland AONB Landscape Character			
Character Type D: Moorland Fringe			
Overview	The Moorland Fringe Landscape Character Type occurs in several locations throughout the Study Area and on the Pendle Hill outlier. This Landscape Character Type usually forms the setting for either the Unenclosed Moorland Hills (B) or Enclosed Moorland Hills (C) Landscape Character Types.		
Key characteristics	<ul style="list-style-type: none">Traditional stone field barns are a recognisable landscape feature;Dry stone walls of rough hewn blocks create strong patterns within the landscape and reflect the underlying geology;Sheep grazing is the predominant land use, interspersed in places with a patchwork of traditionally managed meadows, wet rushy pasture, in-byes and acid grassland.		
Overall sensitivity in relation to vertical structures	<ul style="list-style-type: none">landscape character sensitivity is considered to be high;There is strong intervisibility with adjacent Landscape Character Types, giving high visual sensitivity;Overall, the Moorland Fringe Landscape Character Type has limited to moderate capacity to accommodate change without compromising key characteristics.		
Guidance in relation to vertical structures	<ul style="list-style-type: none">The overall strategy for the Moorland Fringe Landscape Character Type is to conserve the remote, multi textured character of upland habitats;There is also a need to conserve open views across adjacent Landscape Character Types;Protect uncluttered skylines and key views to and from the area from tall, vertical and large-scale developments that may erode the character of the area.		
Landscape Character Area D1: Caton Moor			
Sensitivities in relation to vertical structures	<ul style="list-style-type: none">Open views southwards towards the wind farm on Caton Moor Enclosed Moorland Hills, which is a landmark;Extensive, open, panoramic views northwards across the wide floodplain of the River Lune. Views are, however, interrupted in places by patches of woodland within adjacent areas of Undulating Lowland Farmland.		
Caton Moor Area FOB-D1	Large-scale	Medium-scale	Small-scale
Sensitivity to vertical infrastructure	High	High	High
Magnitude of change	Small	Medium	Medium
Significance of effect	Intermediate	Significant	Significant
Landscape Character Area D2: Tatham			
Sensitivities in relation to vertical structures	<ul style="list-style-type: none">Open views eastwards towards the Great Stone of Fourstone within Croasdale to Lythe Landscape Character Area;Plantation woodland near Bank End brings regularity to the landscape and introduces a recognisable landscape feature within views;Visual contrast within views between the pattern and sense of enclosure of the Moorland Fringe and more open landscapes of the adjacent Unenclosed Moorland Hills.		
Tatham Area FOB-D2	Large-scale	Medium-scale	Small-scale
Sensitivity to vertical	High	High	High

infrastructure			
Magnitude of change	None	Small	Small
Significance of effect	-	Intermediate	Intermediate
Landscape Character Area D4: Hare Appletree			
Sensitivities in relation to vertical structures	<ul style="list-style-type: none"> • Small belts of linear woodland contribute to an intermittent sense of enclosure, however there is also a relatively strong sense of openness within much of the landscape; • Jubilee Tower is landmark feature on the horizon within views eastwards; • From higher points within this area, such as Quernmore Brow, panoramic, open views westwards across lower undulating farmland towards Morecambe Bay and Black Combe (within the Lake District) can be gained; • Large skies and wide panoramas are typical of this area. 		
Hare Appletree Area FOB-D4	Large-scale	Medium-scale	Small-scale
Sensitivity to vertical infrastructure	High	High	High
Magnitude of change	Small	Medium	Small
Significance of effect	Intermediate	Significant	Intermediate
Landscape Character Area D6: Nicky Nook			
Sensitivities in relation to vertical structures	<ul style="list-style-type: none"> • Panoramic open views westwards across the Fylde Plain towards Morecambe Bay and eastwards towards the dramatic rising backdrop of Bowland Fells (Harrisend Fell) to the east; • Jubilee Cairn (a circular stone tower built to commemorate Queen Victoria's Golden Jubilee) and the tarn on Nicky Nook are landmarks within views across the area, which contribute to recognisable sense of place and orientation; • The expanses of water within Grizedale Lea and Barnacre reservoirs, which have an engineered character, provide visual contrast to the surrounding patchwork of roughly grazed fields. 		
Nicky Nook Area FOB-D6	Large-scale	Medium-scale	Small-scale
Sensitivity to vertical infrastructure	High	High	High
Magnitude of change	Small	Medium	Medium
Significance of effect	Intermediate	Significant	Significant
Landscape Character Area D10: Bleasdale			
Sensitivities in relation to vertical structures	<ul style="list-style-type: none"> • Distant sense of enclosure within this landscape, which is provided by the backdrop of surrounding Moorland Hills to the north; • Patches of mixed and coniferous woodland provide an intermittent sense of enclosure. 		
Bleasdale Area FOB-D10	Large-scale	Medium-scale	Small-scale
Sensitivity to vertical infrastructure	High	High	High

Cumulative Impacts of Vertical Infrastructure

Magnitude of change	Small	Medium	Small
Significance of effect	Intermediate	Significant	Intermediate
Landscape Character Area D13: Park House			
Sensitivities in relation to vertical structures	<ul style="list-style-type: none"> The rising mass of Goodber Common provides a dramatic, smooth backdrop to views southwards and contributes to recognisable sense of place. 		
Park House Area FOB-D13	Large-scale	Medium-scale	Small-scale
Sensitivity to vertical infrastructure	High	High	High
Magnitude of change	None	Small	Small
Significance of effect	-	Intermediate	Intermediate
Landscape Character Area D14: Abbeystead			
Sensitivities in relation to vertical structures	<ul style="list-style-type: none"> From the northern half of the area, open views into the intimate valley corridor of the Marshaw Wyre contribute to recognisable sense of place within this Landscape Character Area; To the south, a strong sense of enclosure is provided by dramatic rising masses of Catshaw and Hawthornthwaite Fells; There is a relatively strong sense of remoteness and tranquillity within this landscape. 		
Abbeystead Area FOB-D14	Large-scale	Medium-scale	Small-scale
Sensitivity to vertical infrastructure	High	High	Moderate
Magnitude of change	Small	Small	Small
Significance of effect	Intermediate	Intermediate	Not significant

Forest of Bowland AONB Landscape Character			
Character Type E: Undulating Lowland Farmland			
Overview	There are eight occurrences of the Undulating Lowland Farmland within the Study Area. Landscape Character Areas within this Type occur at the northern, western, southwestern and eastern edges of the Study Area; and in all cases, this Landscape Character Type extends outside the boundary of the AONB.		
Key characteristics	<ul style="list-style-type: none">Many mixed farm woodlands, copses and hedgerow trees;Intricate tapestry of grazed fields;A patchwork of wood and pasture when viewed from the fells.		
Overall sensitivity in relation to vertical structures	<ul style="list-style-type: none">Encroachment of large scale development such as wind farms, masts and pylons into the area would also have a significant effect on landscape character;moderate landscape character sensitivity;Overall, visual sensitivity is considered to be moderate;In places, woodland and hedgerows limit views, whilst there is strong intervisibility with the Unenclosed and Enclosed Moorland Hills and Moorland Plateaux Landscape Character Types.		
Guidance in relation to vertical structures	<ul style="list-style-type: none">Conserve open views towards the surrounding higher Moorland Plateaux and Unenclosed and Enclosed Moorland Hills Landscape Character Types;Conserve the distinctive settings to rural settlements.		
Landscape Character Area E2: Quernmore			
Sensitivities in relation to vertical structures	<ul style="list-style-type: none">Dramatic, open views to Clougha Pike and Birk Bank Quarries which form the skyline horizon within views eastwards;Caton Moor windfarm is a striking landscape feature on the horizon of views to the east;Views westwards along the corridor of the M6, which introduces a source of noise and movement;The buildings of Lancaster University are also visible within views westwards from this landscape.		
Quernmore Area FOB-E2	Large-scale	Medium-scale	Small-scale
Sensitivity to vertical infrastructure	High	High	Moderate
Magnitude of change	Small	Large	Small
Significance of effect	Intermediate	Significant	Not significant
Landscape Character Area E3: Forest of Mewith			
Sensitivities in relation to vertical structures	<ul style="list-style-type: none">Framed views westwards into the Hindburndale Valley;Dramatic, open views southwards towards the rising mass of Moorland Hills at the centre of the Forest of Bowland;Panoramic, open views northwards towards the peaks of the Yorkshire Dales.		
Forest of Mewith Area FOB-E3	Large-scale	Medium-scale	Small-scale
Sensitivity to vertical infrastructure	High	High	High
Magnitude of change	None	Small	Small
Significance of	-	Intermediate	Intermediate

Cumulative Impacts of Vertical Infrastructure

effect			
Landscape Character Area E5: Bleasdale			
Sensitivities in relation to vertical structures	<ul style="list-style-type: none"> • Linear belts of mixed woodland provide a varied sense of enclosure and contribute texture to this patchwork of gently undulating pastoral fields; • To the south, there is a stronger sense of openness with views into the northern end of the Brock Valley and towards Beacon Fell Country Park providing recognisable sense of place; • There is a relatively strong sense of tranquillity throughout much of this area due to the general absence of road corridors crossing the landscape. 		
Bleasdale Area FOB-E5	Large-scale	Medium-scale	Small-scale
Sensitivity to vertical infrastructure	High	High	High
Magnitude of change	Small	Medium	Small
Significance of effect	Intermediate	Significant	Intermediate

Forest of Bowland AONB Landscape Character			
Character Type F: Undulating Lowland Farmland With Wooded Brooks			
Overview	The Undulating Lowland Farmland with Wooded Brooks Landscape Character Type occurs in four different locations at the periphery of the Study Area. There is also one occurrence on the Pendle Hill outlier. This Landscape Character Type is generally located adjacent to other lowland LCT's, rather than the higher Moorland Plateaux, Unenclosed and Enclosed Moorland Hills.		
Key characteristics	<ul style="list-style-type: none">• A patchwork of pasture fields which are deeply incised by wooded troughs and gorges;• A network of hedgerows and stone walls delineate field boundaries;• Several scattered cottages and clustered villages.		
Overall sensitivity in relation to vertical structures	<ul style="list-style-type: none">• Encroachment of large scale development such as wind farms, masts and pylons into the area would also have a significant effect on landscape character;• In places, woodland and hedgerows limit views, whilst there is strong intervisibility with the Unenclosed and Enclosed Moorland Hills and Moorland Plateaux Landscape Character Types;• This Type is considered to have moderate landscape character sensitivity;• Overall, visual sensitivity is considered to be moderate.		
Guidance in relation to vertical structures	<ul style="list-style-type: none">• Open views towards the unenclosed and enclosed moorland hills and moorland plateaux Landscape Character Types, and views framed across the Lune and Ribble, should also be conserved.		
Landscape Character Area F1: Calder Vale and Brock Valley			
Sensitivities in relation to vertical structures	<ul style="list-style-type: none">• Coppiced woodland and strips or blocks of damp birch woodland are also a feature in places;• Coniferous woodland on the rising mass of Beacon Fell dominates the skyline of views eastwards.		
Calder Vale and Brock Valley Area FOB-F1	Large-scale	Medium-scale	Small-scale
Sensitivity to vertical infrastructure	High	Moderate	Moderate
Magnitude of change	Small	Large	Medium
Significance of effect	Intermediate	Significant	Intermediate
Landscape Character Area F4: Caton			
Sensitivities in relation to vertical structures	<ul style="list-style-type: none">• Linear belts of deciduous woodland punctuate this landscape and contribute to an intermittent sense of enclosure within views;• Panoramic, open and framed views northwards across the wide floodplain of the River Lune;• To the south, the dramatic rising profile of the central Unclosed and Enclosed Moorland Hills and Moorland Plateaux Landscape Character Types form the skyline backdrop to views.		
Caton Area FOB-F4	Large-scale	Medium-scale	Small-scale
Sensitivity to vertical infrastructure	High	High	High
Magnitude of	None	Small	Small

Cumulative Impacts of Vertical Infrastructure

change			
Significance of effect	-	Intermediate	Intermediate

Forest of Bowland AONB Landscape Character			
Character Type G: Undulating Lowland Farmland With Parkland			
Overview	The Undulating Lowland Farmland with Parkland Landscape Character Type is predominantly situated within the southern half of the Study Area, to the south of Dunsop Bridge and Slaidburn and east of Chipping. This Landscape Character Type also occurs at the western edge of the Study Area (to the north of Scorton) and also on the Pendle Hill outlier, at Downham and Sabden.		
Key characteristics	<ul style="list-style-type: none">• Mature parkland trees and other ornamental designed landscape features contribute to the 'designed' estate character• Gently undulating topography;• Remnant boundaries of former parkland are also visible features.		
Overall sensitivity in relation to vertical structures	<ul style="list-style-type: none">• The overall condition of the Undulating Farmland with Parkland Landscape Character Type is considered to be moderate;• Overall, landscape character and visual sensitivity is considered to be moderate;• In places, woodland and hedgerows limit views, whilst there is strong intervisibility with the Unenclosed and Enclosed Moorland Hills, Valley Floodplain and Moorland Plateaux Landscape Character Types.		
Guidance in relation to vertical structures	<ul style="list-style-type: none">• Conserve open views towards the surrounding higher Moorland Plateaux and Unenclosed and Enclosed Moorland Hills Landscape Character Types;• Conserve open and framed views across and into the corridors of the River Ribble.		
Landscape Character Area G1: Wyresdale			
Sensitivities in relation to vertical structures	<ul style="list-style-type: none">• The profile of Nicky Nook provides the backdrop to views southwards and provides a setting for the lake at Wyresdale;• The corridor of the M6 motorway introduces a source of noise and movement at the western edge of the area.		
Wyresdale Area FOB-G1	Large-scale	Medium-scale	Small-scale
Sensitivity to vertical infrastructure	High	High	Moderate
Magnitude of change	Small	Medium	Medium
Significance of effect	Intermediate	Significant	Intermediate

Forest of Bowland AONB Landscape Character			
Character Type I: Wooded Rural Valleys			
Overview	The Wooded Rural Valleys Landscape Character Type occurs in eight different locations throughout the Study Area. In the north of the AONB, the edges of this LCT are generally bordered by a combination of Unenclosed (B) and Enclosed Moorland Hills (C) or Moorland Fringe (D) Landscape Character Types. To the south, however, the Wooded Rural Valleys cut through Undulating Lowland Farmland (E) or Undulating Farmland with parkland (G) Landscape Character Types.		
Key characteristics	<ul style="list-style-type: none">• Undulating lanes dip into and out of the valleys;• · Deeply incised, wooded cloughs create a strong pattern;• · Local areas of landslip on the steep valley sides create a distinctive hummocky local topography;• · Strong sense of enclosure.		
Overall sensitivity in relation to vertical structures	<ul style="list-style-type: none">• The Wooded Rural Valleys Landscape Character Type is considered to have moderate visual sensitivity as a result of the variable sense of enclosure and moderate intervisibility with adjacent Landscape Character Types;• As a result of the above factors, this Landscape Character type is considered to have limited capacity to accommodate change without compromising key characteristics.		
Guidance in relation to vertical structures	<ul style="list-style-type: none">• Conserve the strong sense of remoteness and tranquillity within most of the valleys.		
Landscape Character Area I1: Littledale			
Sensitivities in relation to vertical structures	<ul style="list-style-type: none">• Panoramic, open views northwards towards Morecambe Bay and Black Combe (Lake District) from the higher points along the southern slopes of the river valley;• Open views from the northern valley slopes towards Caton Moor to the north, with the windfarm a visible feature on the horizon.		
Littledale Area FOB-I1	Large-scale	Medium-scale	Small-scale
Sensitivity to vertical infrastructure	High	High	High
Magnitude of change	Small	Small	Small
Significance of effect	Intermediate	Intermediate	Intermediate
Landscape Character Area I2: Roeburndale			
Sensitivities in relation to vertical structures	<ul style="list-style-type: none">• Strong sense of enclosure within the valley provided by the Unenclosed Moorland Hills of Goodber Common to the east and the Enclosed Moorland Hills at the eastern end of Caton Moor;• An associated strong sense of remoteness and tranquillity.		
Roeburndale Area FOB-I2	Large-scale	Medium-scale	Small-scale
Sensitivity to vertical infrastructure	High	High	High
Magnitude of change	None	Small	Small

Appendix 1: Landscape Character Tables

Significance of effect	-	Intermediate	Intermediate
Landscape Character Area I3: Hindburndale			
	<ul style="list-style-type: none"> A strong sense of remoteness, isolation and tranquillity within the valley corridor, resulting from lack of access (other than by foot) to the valley from the south and the enclosing ring of Moorland Hills; Framed views northwards towards the peaks of the Yorkshire Dales 		
Hindburndale Area FOB-I3	Large-scale	Medium-scale	Small-scale
Sensitivity to vertical infrastructure	High	High	High
Magnitude of change	None	Small	Small
Significance of effect	-	Intermediate	Intermediate
Landscape Character Area I5: Over Wyresdale			
Sensitivities in relation to vertical structures	<ul style="list-style-type: none"> A very broad wooded valley, where woodland is a dominant feature of the landscape; To the south of the valley, Hawthornthwaite Fell provides a sense of enclosure and forms the backdrop to view. 		
Over Wyresdale Area FOB-I5	Large-scale	Medium-scale	Small-scale
Sensitivity to vertical infrastructure	High	High	High
Magnitude of change	Small	Small	Small
Significance of effect	Intermediate	Intermediate	Intermediate

Forest of Bowland AONB Landscape Character			
Character Type J: Valley Floodplain			
Overview	The Valley Floodplain Landscape Character Type occurs twice within the Study Area, firstly to the north of Caton (at the northern edge of the AONB) and secondly, to the south of Grindleton and Bolton-by-Bowland at the southern edge of the AONB.		
Key characteristics	<ul style="list-style-type: none">• Open, broad, flat floodplains, subject to periodic flooding which provides fertile grazing land;• Steep, wooded bluffs and terraces enclose the floodplain;• Mature spreading floodplain trees are distinctive element;s• Large fields, divided by post and wire fencing, hedgerows or stone walls.		
Overall sensitivity in relation to vertical structures	<ul style="list-style-type: none">• Overall visual sensitivity within the Valley Floodplain Landscape Character Type is considered to be high, as a result of the generally strong intervisibility with surrounding higher Landscape Character Types and the strong sense of openness within views along the valleys;• overall high landscape character sensitivity;• this Landscape Character Type is considered to have limited capacity to accommodate change without compromising key characteristics..		
Guidance in relation to vertical structures	<ul style="list-style-type: none">• Conserve open views along and across the valley floodplains towards adjacent Landscape Character Types.		
Landscape Character Area J1:Lune			
Sensitivities in relation to vertical structures	<ul style="list-style-type: none">• Flat, wide floodplain of the River Lune, which is surrounded by rolling drumlins and hills;• Panoramic open views northwards towards the peaks of the Yorkshire Dales and southwards to the dramatic rising Moorland Hills and Plateaux contribute to strongly recognisable sense of place.		
Lune Area FOB-J1	Large-scale	Medium-scale	Small-scale
Sensitivity to vertical infrastructure	High	High	High
Magnitude of change	Small	Small	Small
Significance of effect	Intermediate	Intermediate	Intermediate

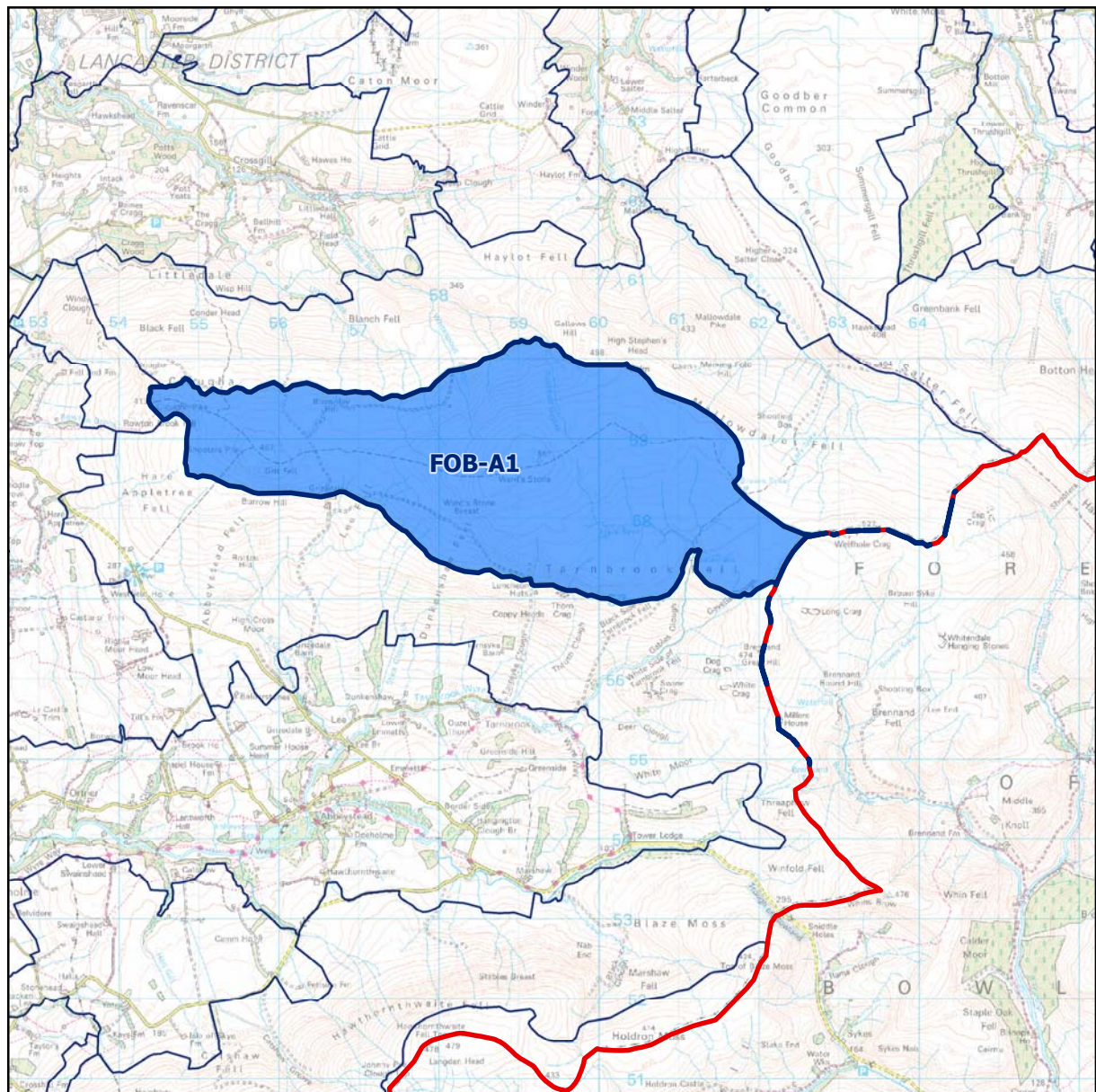
Forest of Bowland AONB Landscape Character			
Character Type K: Drumlin Field			
Overview	The Drumlin Field Landscape Character Type occurs at the northern edge of the AONB and continues to the north (within Craven District1) and west of AONB. There are four occurrences of this LCT within the Study Area, to the north of Caton, east of Hornby, northwest of Settle and south of Gisburn.		
Key characteristics	<ul style="list-style-type: none">• Small copses of mixed woodlands punctuate the landscape and provide visual foci;• Strong field pattern with distinctive limestone walls and low hedgerows enhance landform;• Rounded drumlins create a distinctive rolling topography.		
Overall sensitivity in relation to vertical structures	<ul style="list-style-type: none">• Sustained pressure to develop renewable energy resources could lead to increased development of key skylines and view eroding valuable landscape quality;• Landscape character sensitivity is considered to be moderate to high as a result of pattern of landscape features, including stone walls, hedgerows and pockets of woodland;• Overall, the Drumlin Field Landscape Character Type is considered to have limited capacity to accommodate change without compromising key characteristics.		
Guidance in relation to vertical structures	<ul style="list-style-type: none">• The strong built vernacular character, and skyline and views into and out of the area should be retained.• Built development on ridgelines and hill tops should be avoided;• Maintain the predominantly open character of the landscape;• Protect key views to and from the area from tall and vertical large-scale developments that may erode the open and undeveloped character of the area;• Shelter built development within the undulating landform- avoid ridgelines or hill tops.		
Landscape Character Area K1: Gressingham			
Sensitivities in relation to vertical structures	<ul style="list-style-type: none">• Framed views from lower points and open views from higher points northwestwards across Nether Kellet and Over Kellet to the urban areas of Carnforth and across Morecambe Bay;• Patches of mature mixed coniferous woodland, coupled with the rolling topography, contribute to an intermittent sense of enclosure, moving through the landscape;• Dramatic, framed views northwards towards the peaks of the Yorkshire Dales;• Framed views southwards towards the dramatic rising mass of Moorland Hills and Plateaux within the Forest of Bowland.		
Gressingham Area FOB-K1	Large-scale	Medium-scale	Small-scale
Sensitivity to vertical infrastructure	High	High	High
Magnitude of change	Small	Medium	Small
Significance of effect	Intermediate	Significant	Intermediate
Landscape Character Area K2: Lower Tatham			
Sensitivities in relation to vertical structures	<ul style="list-style-type: none">• Patches of mixed woodland and the rolling nature of the topography contribute to an intermittent sense of enclosure and frame views across the landscape;• Dramatic, open views northwards towards the Peaks of the Yorkshire		

Cumulative Impacts of Vertical Infrastructure

	Dales; <ul style="list-style-type: none"> Dramatic, open views southwards towards the rising mass of Moorland Hills and Plateaux within the Forest of Bowland. 		
Lower Tatham Area FOB-K2	Large-scale	Medium-scale	Small-scale
Sensitivity to vertical infrastructure	High	High	High
Magnitude of change	None	Small	Small
Significance of effect	-	Intermediate	Intermediate

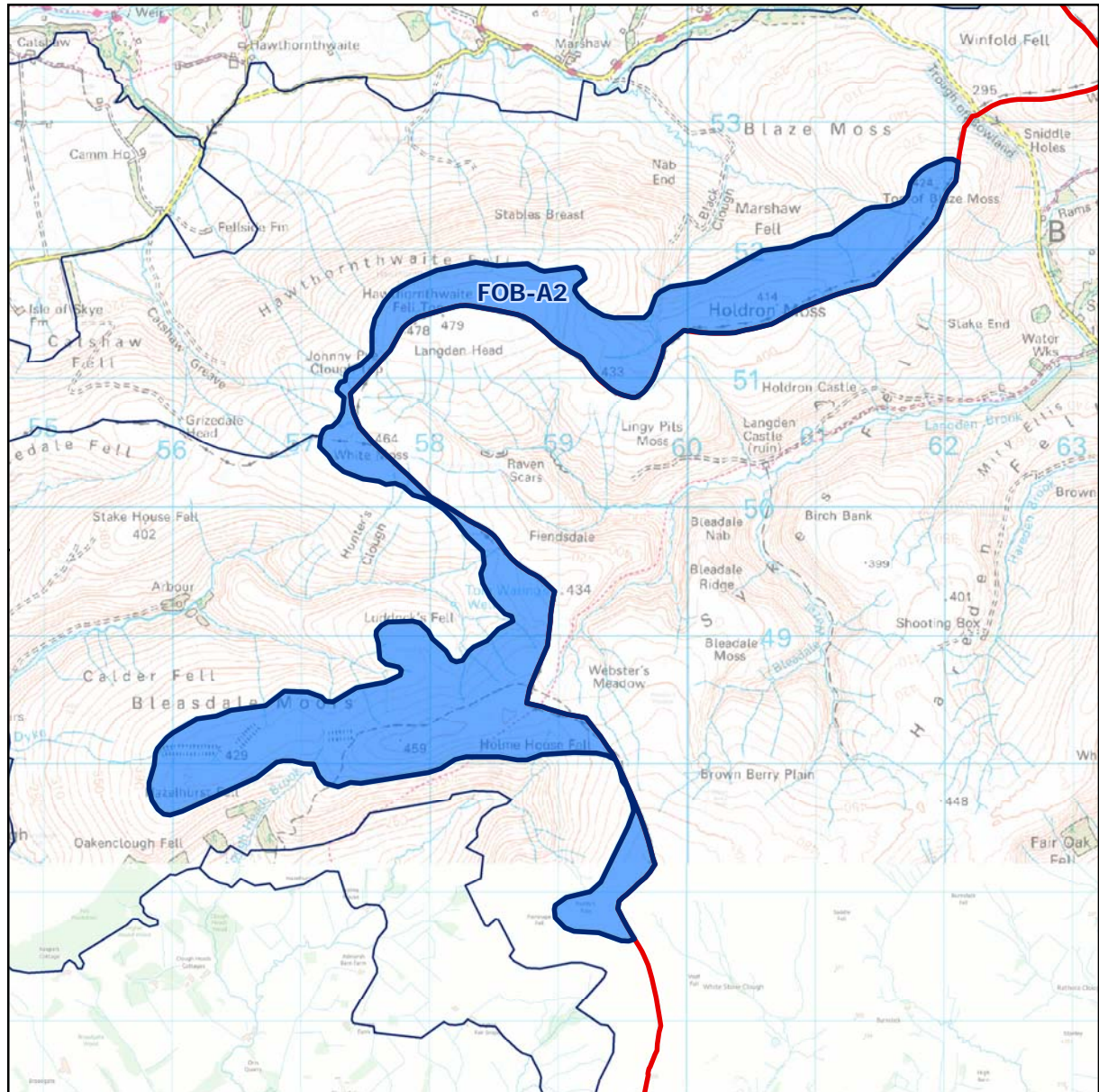
Forest of Bowland AONB Landscape Character			
Character Type N: Farmed Ridges			
Overview	There are two occurrences of the Farmed Ridges Landscape Character Type within the AONB, one to the west of Quernmore and the other on the Pendle Hill outlier, to the south of Sabden.		
Key characteristics	<ul style="list-style-type: none">• Mosaic of mixed farmland and woodland forms a textural backdrop to the surrounding lowlands;• Low stone walls often delineate field boundaries;• Settlement pattern of isolated stone farmsteads;• Rounded ridge profiles of the gritstone outcrops.		
Overall sensitivity in relation to vertical structures	<ul style="list-style-type: none">• landscape character sensitivity within the Farmed Ridges Landscape Character Type is considered to be moderate;• Visual sensitivity is also moderate, resulting from the intermittent sense of enclosure provided by areas of dense woodland;• Outside this woodland, there is strong intervisibility with adjacent Lowland Undulating Farmland and Moorland Hills Landscape Character Types.		
Guidance in relation to vertical structures	<ul style="list-style-type: none">• Conserve the long, open views across surrounding lowlands from the ridge top settlements and roads;• Conserve long, open views across surrounding lowlands from ridge-top settlements and roads;• Minimise vertical structures on the skyline.		
Landscape Character Area N1: Quernmore			
Sensitivities in relation to vertical structures	<ul style="list-style-type: none">• This area provides a backdrop to views south and westwards from the wide valley floodplain of the River Ribble;• Panoramic, open views from the western edge of this area across Lancaster towards Morecambe Bay contribute to recognisable sense of place.		
Quernmore Area FOB-N1	Large-scale	Medium-scale	Small-scale
Sensitivity to vertical infrastructure	High	High	Moderate
Magnitude of change	Small	Very large	Large
Significance of effect	Intermediate	Great significance	Significant

Forest of Bowland AONB Landscape Character



A1
Ward's Stone

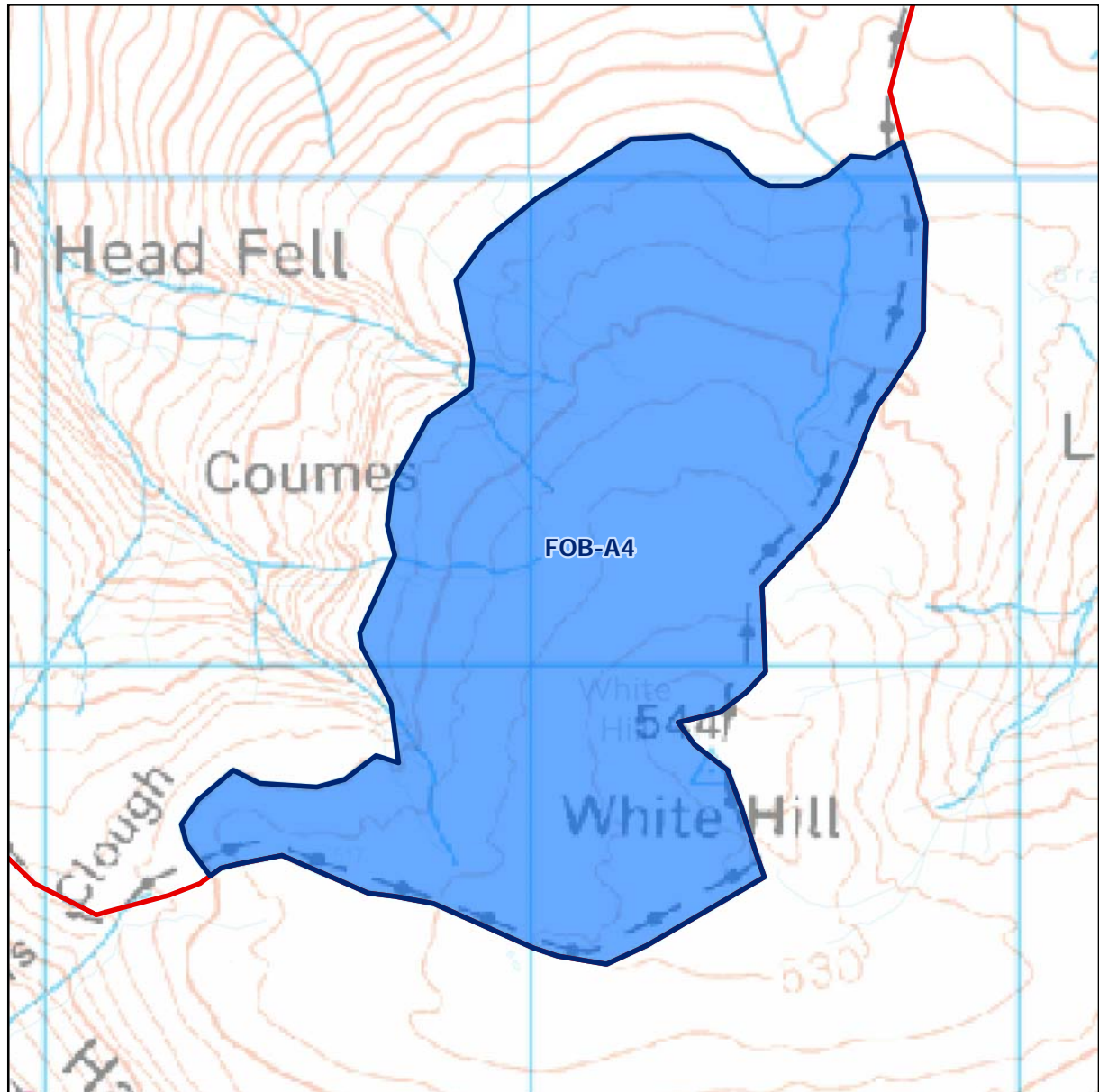
Forest of Bowland AONB Landscape Character



A2

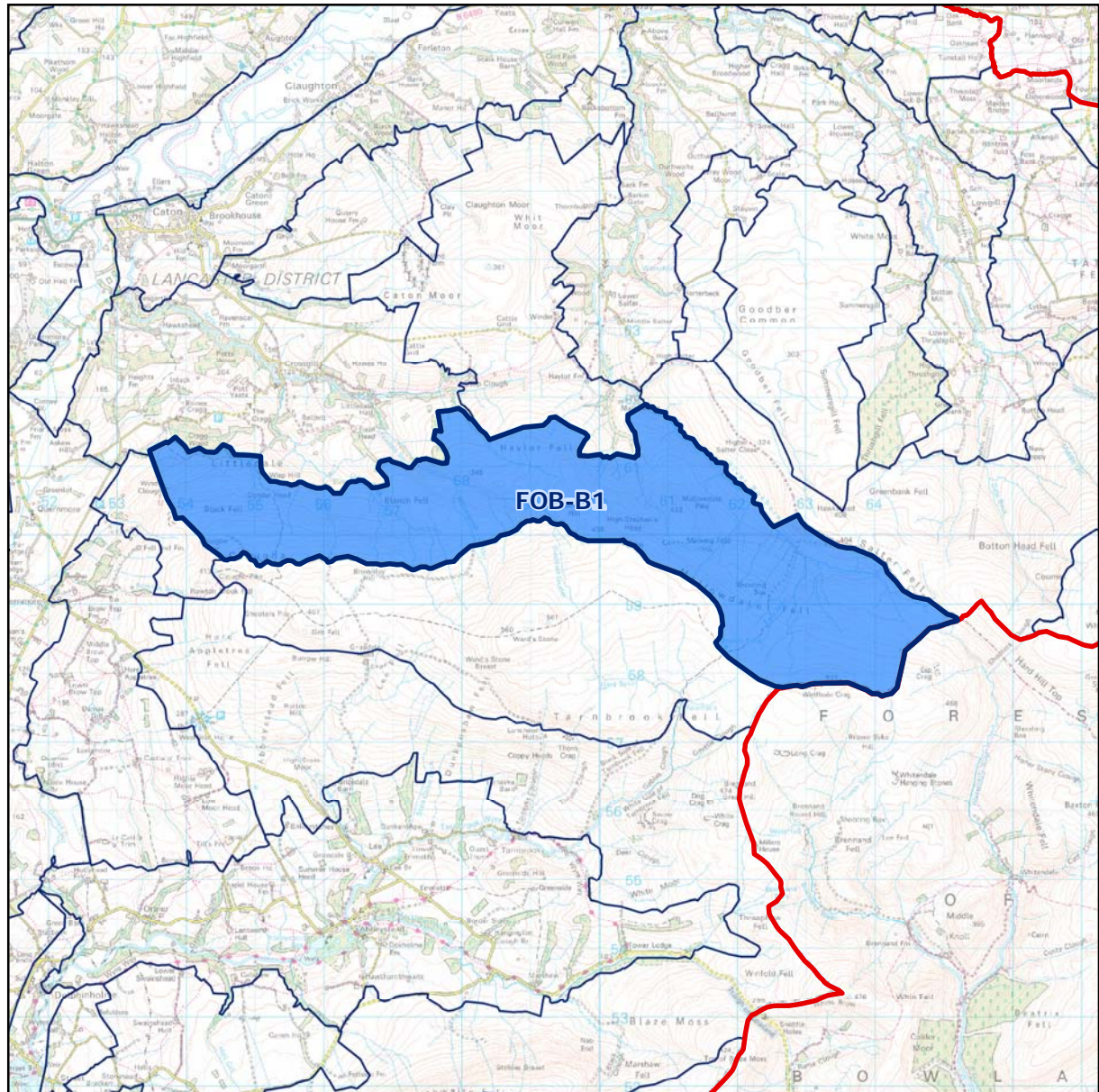
Brown Berry Plain and Holdron Moss

Forest of Bowland AONB Landscape Character



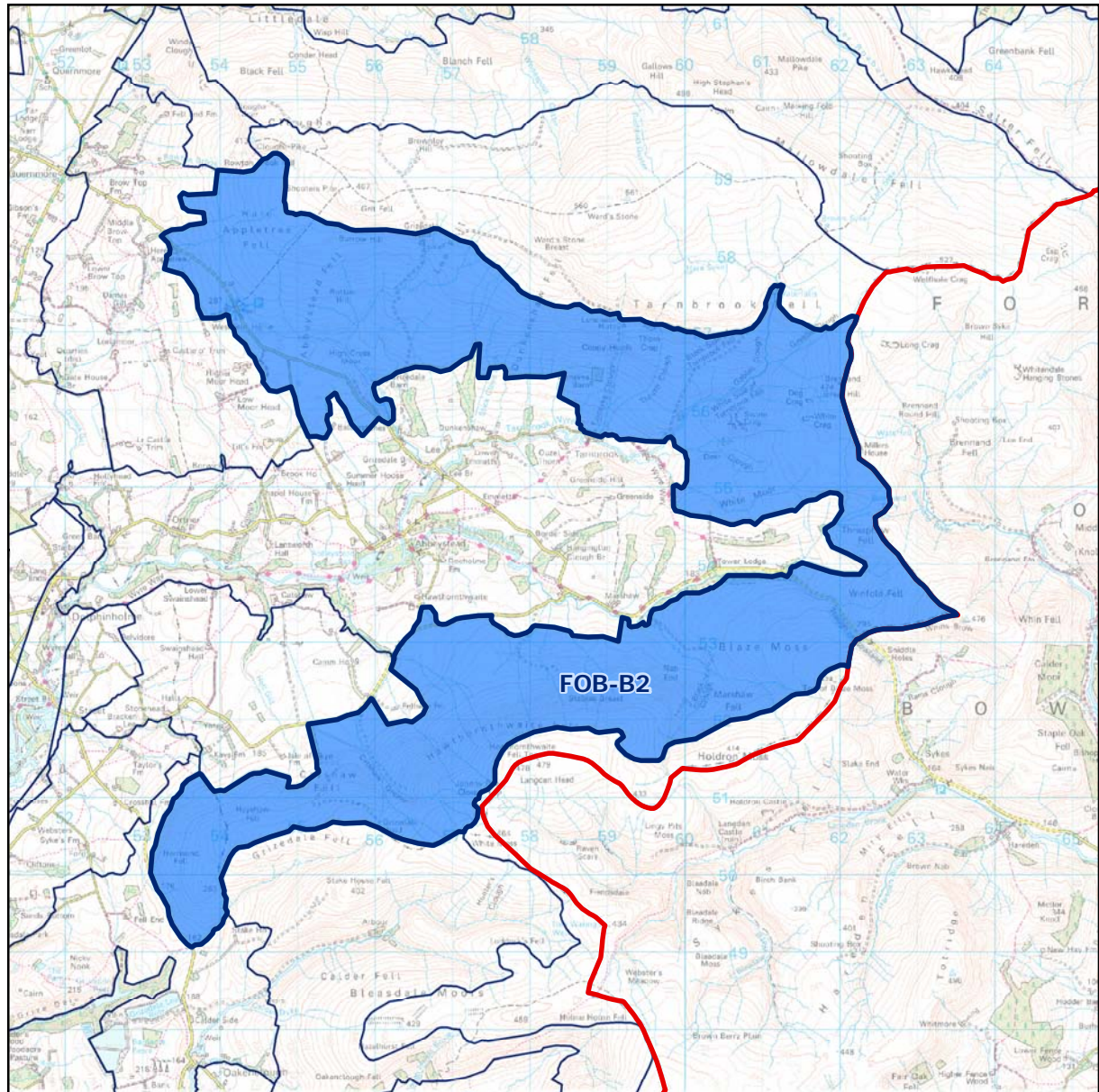
A4
White Hill

Forest of Bowland AONB Landscape Character



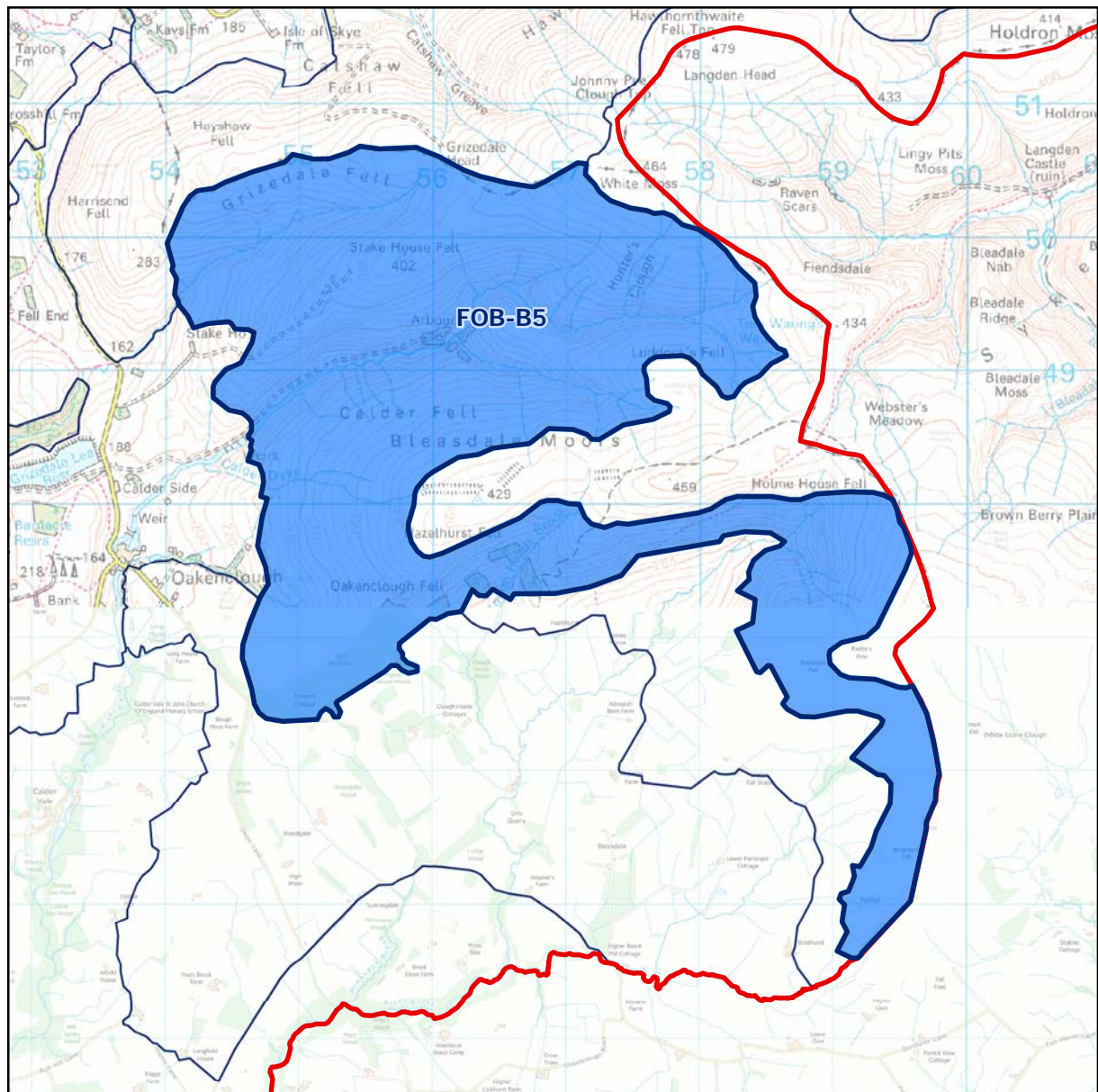
B1
Mallowdale

Forest of Bowland AONB Landscape Character



B2
Abbaystead

Forest of Bowland AONB Landscape Character



B5
Bleasdale

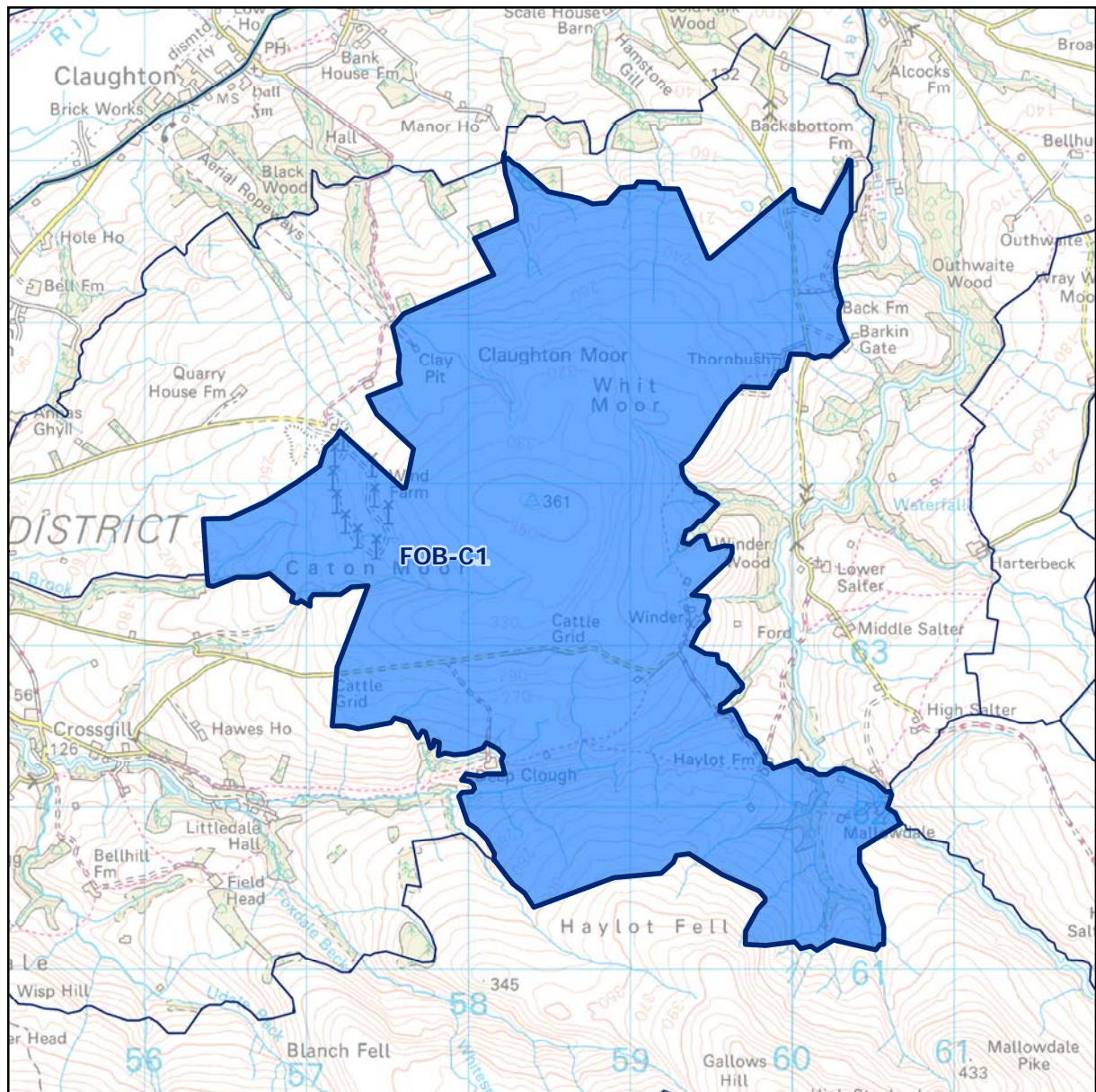
B8

The map shows the Goodber Comm (FOB-B9) area in North Yorkshire. The boundary is highlighted in blue. Key features include:

- Settlements and Landmarks:** White Moss, Summersgill, Greenbank Fell, Thrushgill Fell, Higher Thrushgill, Lower Thrushgill, Bottom Mill, Swans, Lower Houses, Smeer Hall, Leyland Fm, Scale, Outhwaite, Wray Wood Moor, Stauvin, Harterbeck, Middle Salter, High Salter, Mallowdale, Higher Salter Close, Mallowdate Pike, High Stephen's Head, Marking Fold Hill, Botton He.
- Water Features:** River Ribblesdale, River Wharfe, Waterfall, Dale Beck.
- Infrastructure:** Roman Road, B1, B2, B3, B4, B5, B6, B7, B8, B9, B10, B11, B12, B13, B14, B15, B16, B17, B18, B19, B20, B21, B22, B23, B24, B25, B26, B27, B28, B29, B30, B31, B32, B33, B34, B35, B36, B37, B38, B39, B40, B41, B42, B43, B44, B45, B46, B47, B48, B49, B50, B51, B52, B53, B54, B55, B56, B57, B58, B59, B60, B61, B62, B63, B64, B65, B66, B67, B68, B69, B70, B71, B72, B73, B74, B75, B76, B77, B78, B79, B80, B81, B82, B83, B84, B85, B86, B87, B88, B89, B90, B91, B92, B93, B94, B95, B96, B97, B98, B99, B100.

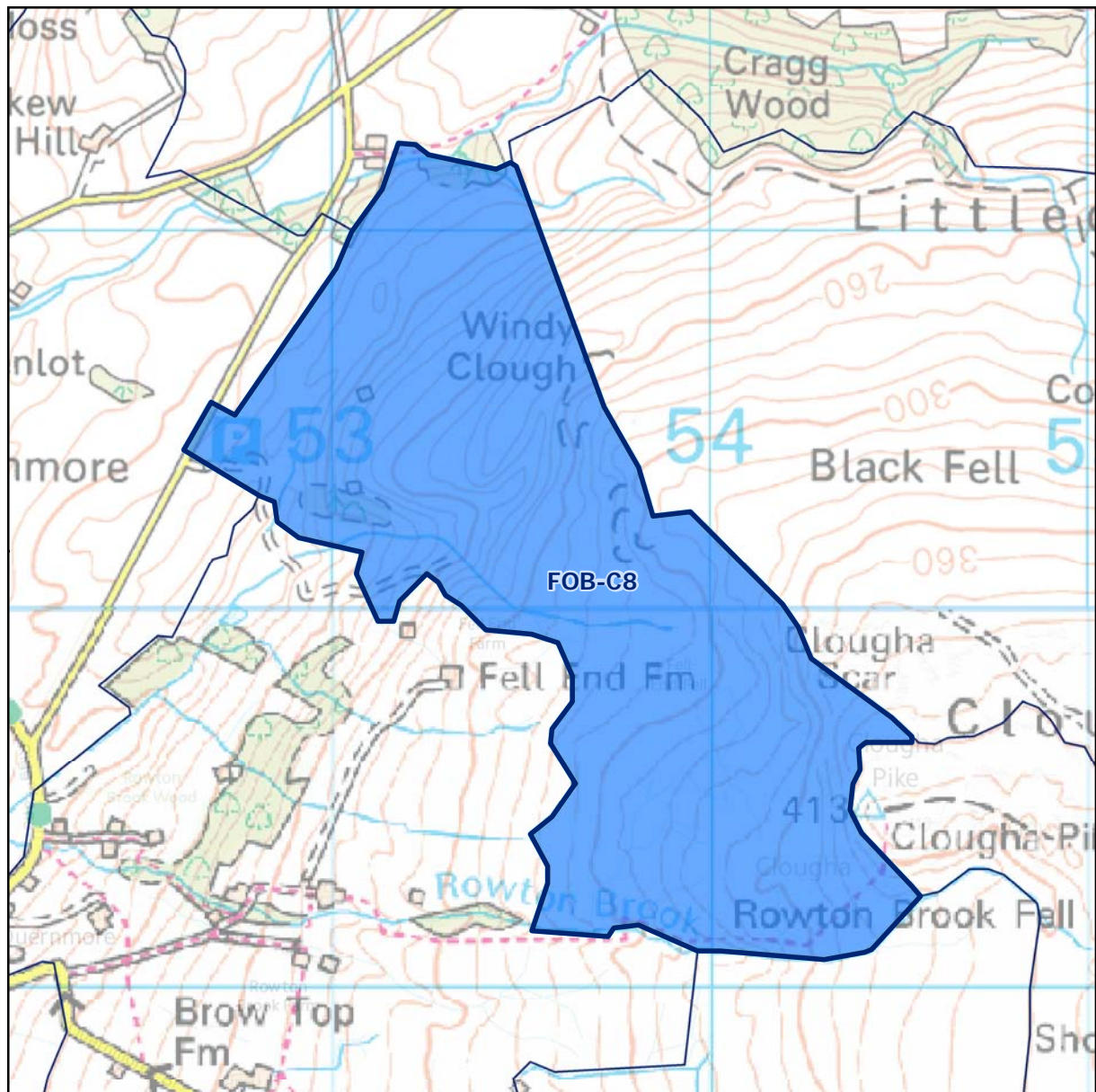
B9
Goodber Common

Forest of Bowland AONB Landscape Character



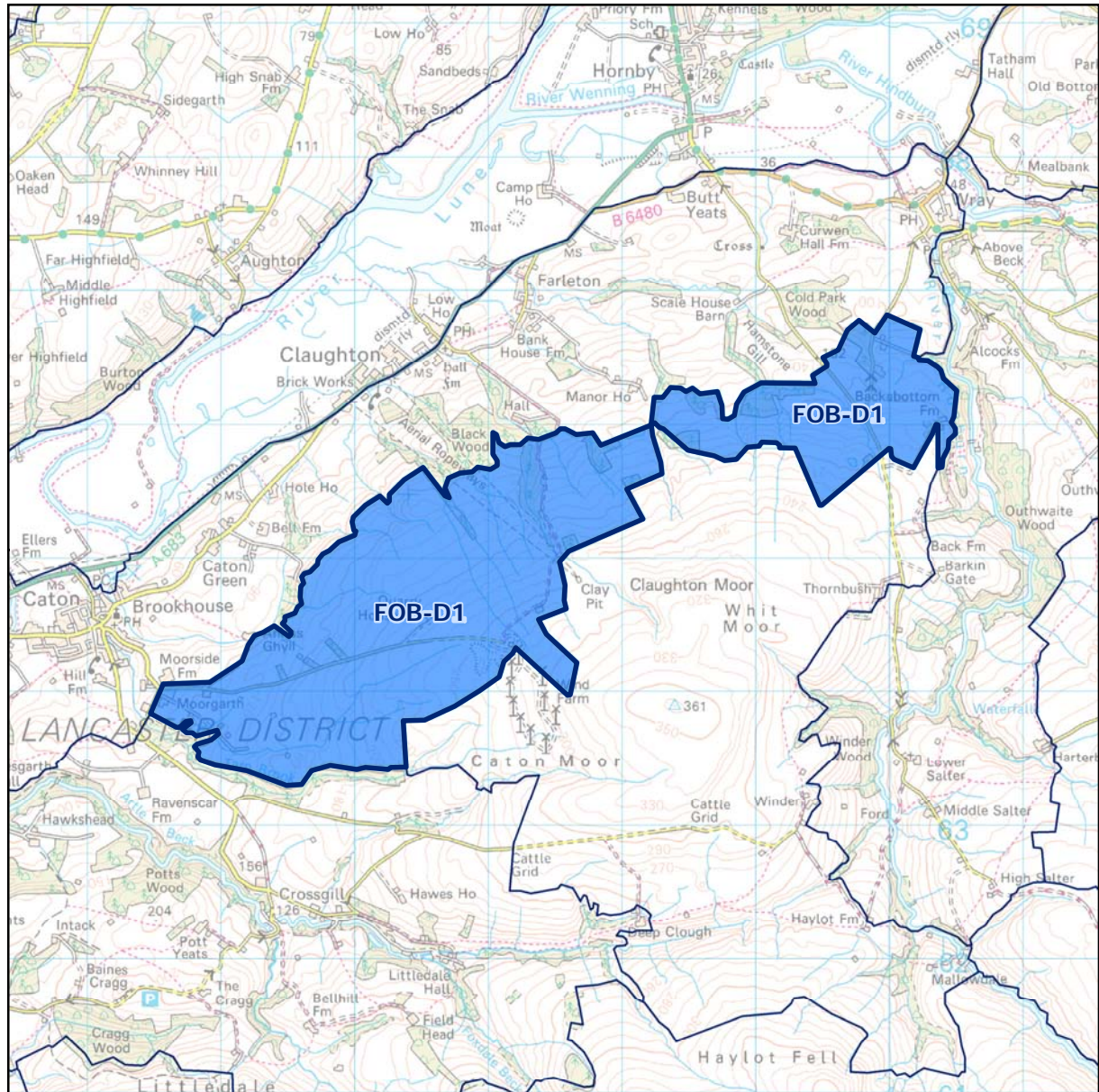
C1
Caton Moor

Forest of Bowland AONB Landscape Character



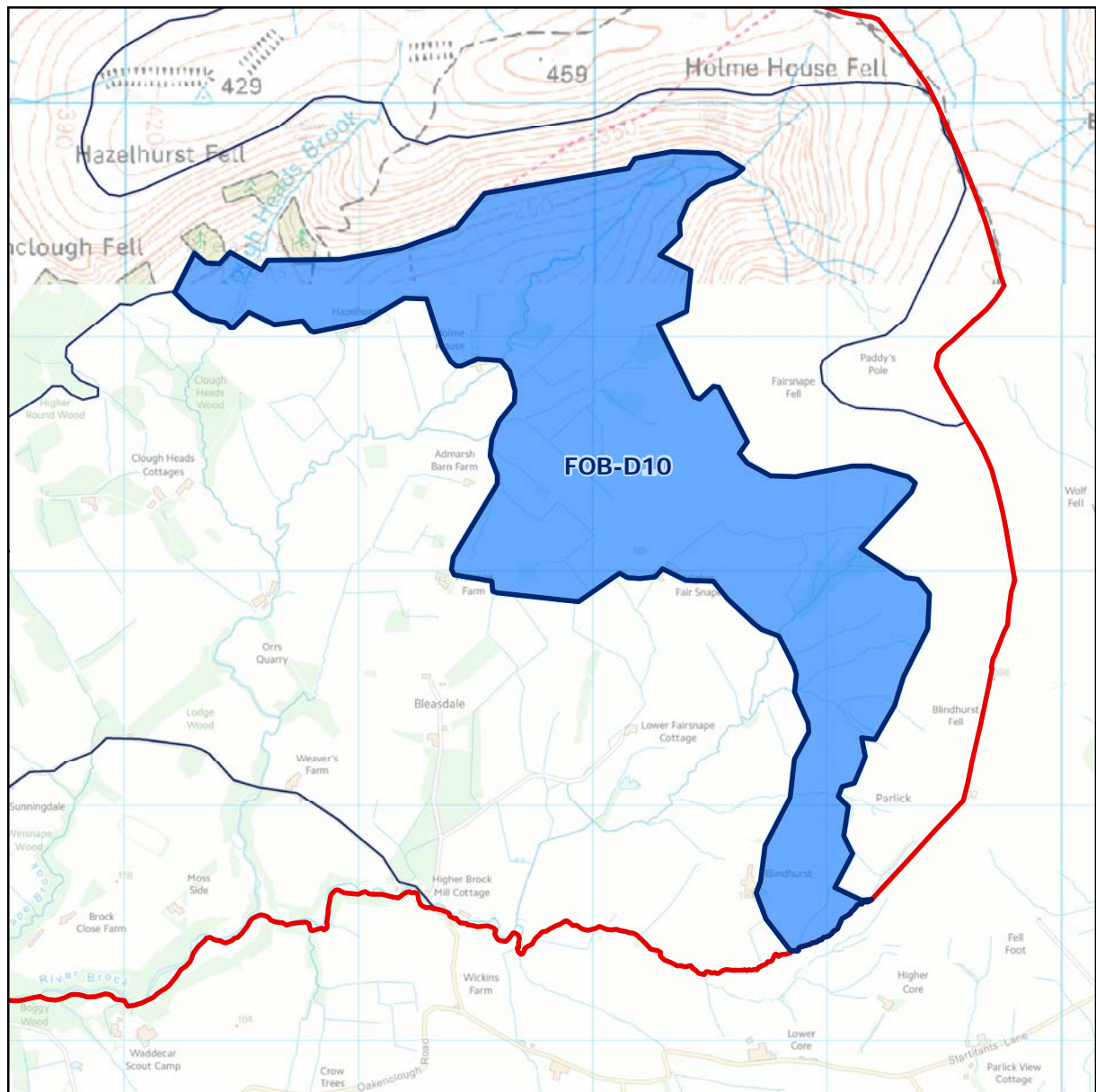
C8
Birk Bank

Forest of Bowland AONB Landscape Character



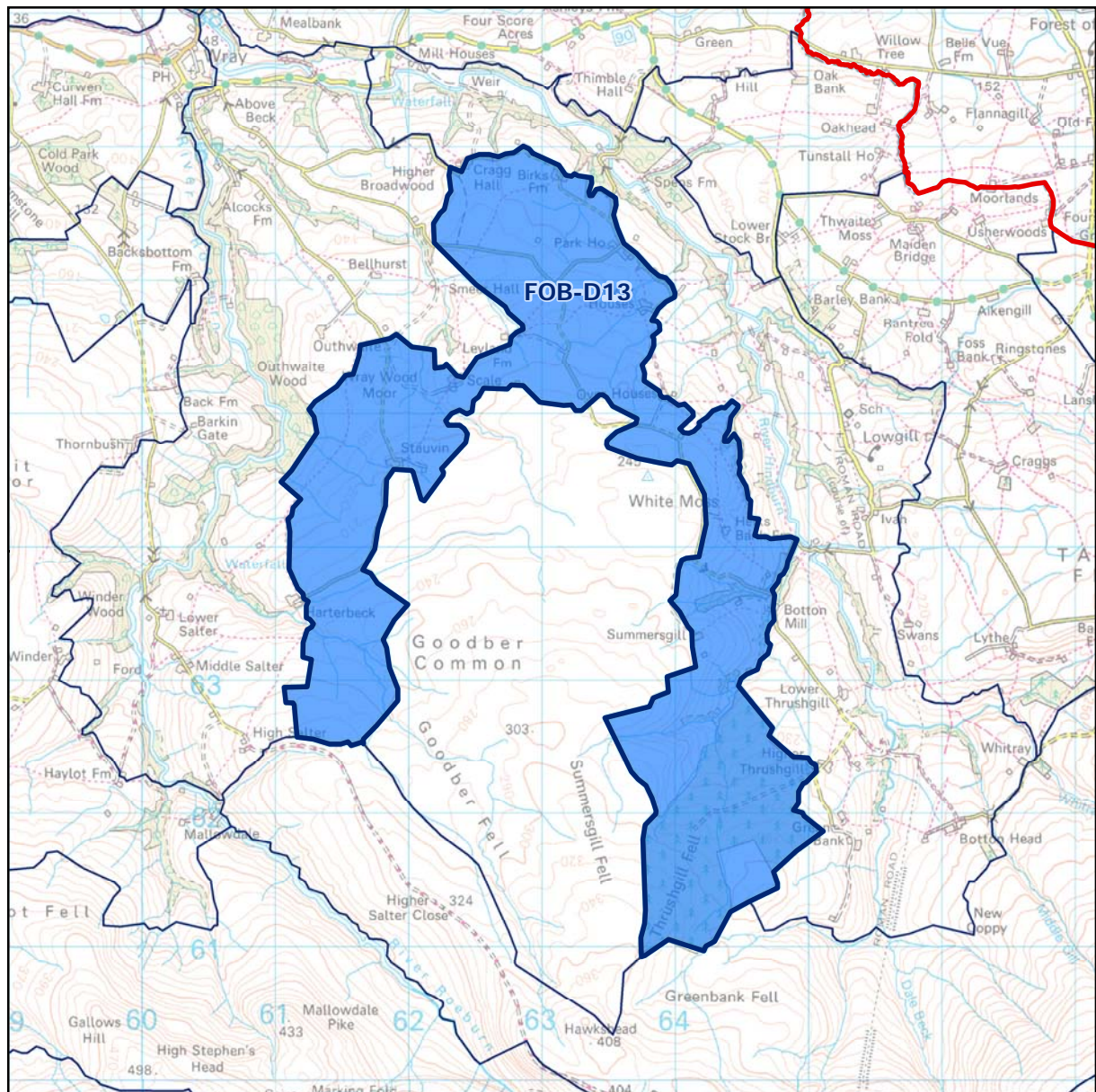
D1
Caton Moor

Forest of Bowland AONB Landscape Character



D10
Bleasdale

Forest of Bowland AONB Landscape Character



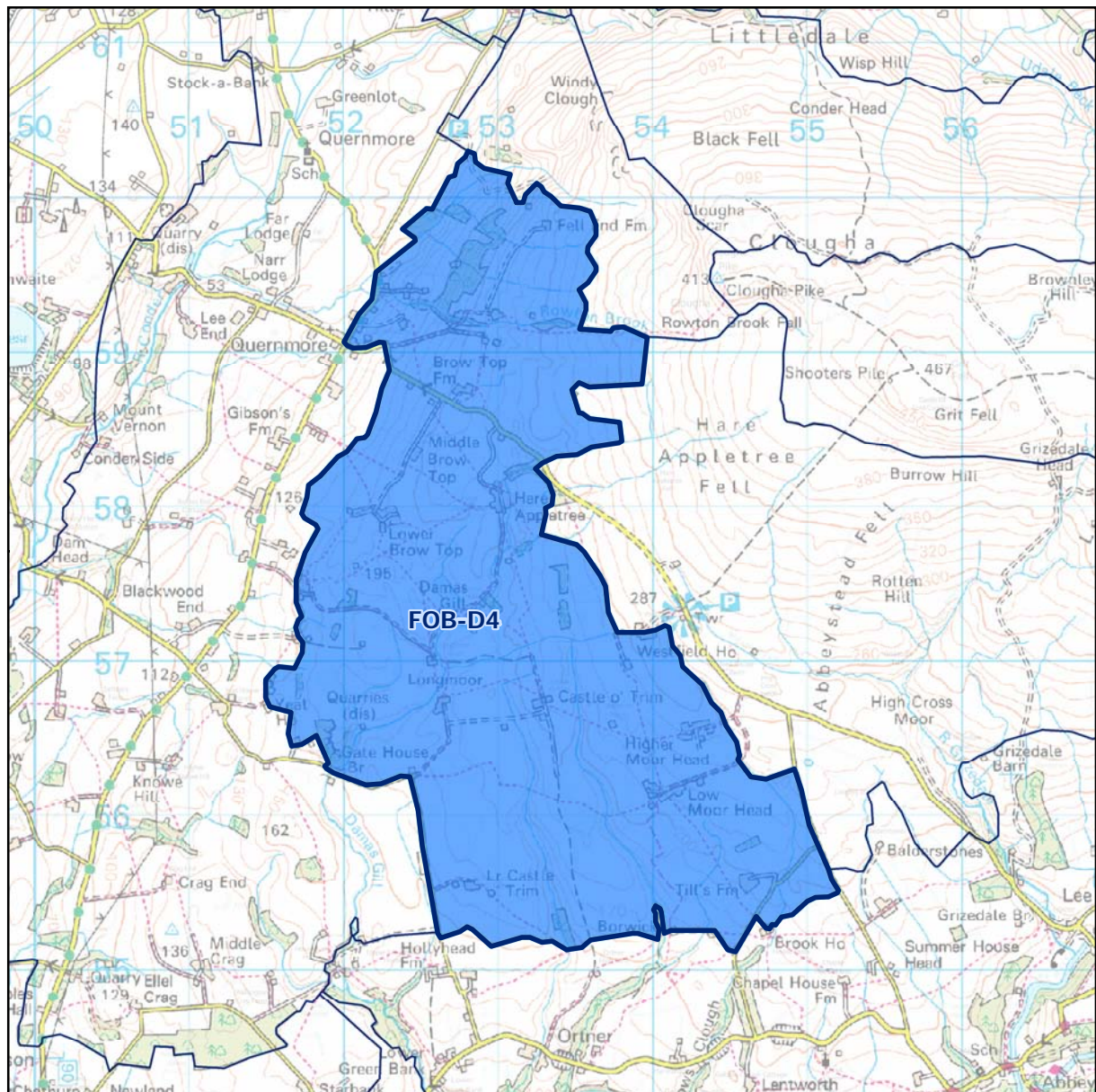
D13
Park House

D14
Abbeystead

This topographic map shows the Tatham Fell area in the Lake District. The Tatham Fell Special Reserve is highlighted in blue, and the Tatham Fell SSSI is outlined in red. The map includes contour lines, roads, and various place names such as Thwaite Moss, Maiden Bridge, and Lythe Fell. The Tatham Fell SSSI is a large area of moorland, and the Tatham Fell Special Reserve is a smaller area within it. The map also shows the River Hindburn and the Lythe Fell.

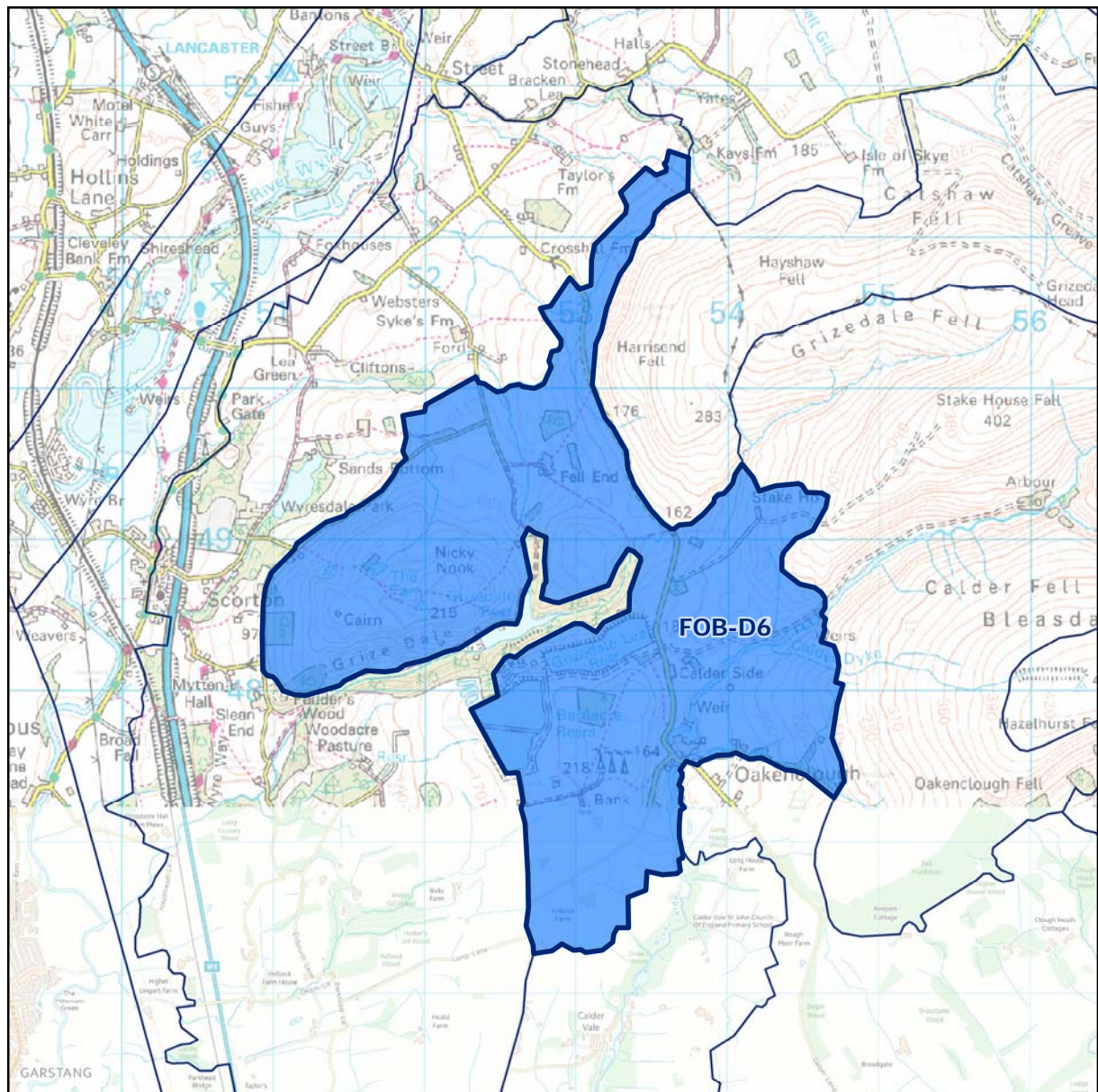
D2
Tatham

Forest of Bowland AONB Landscape Character



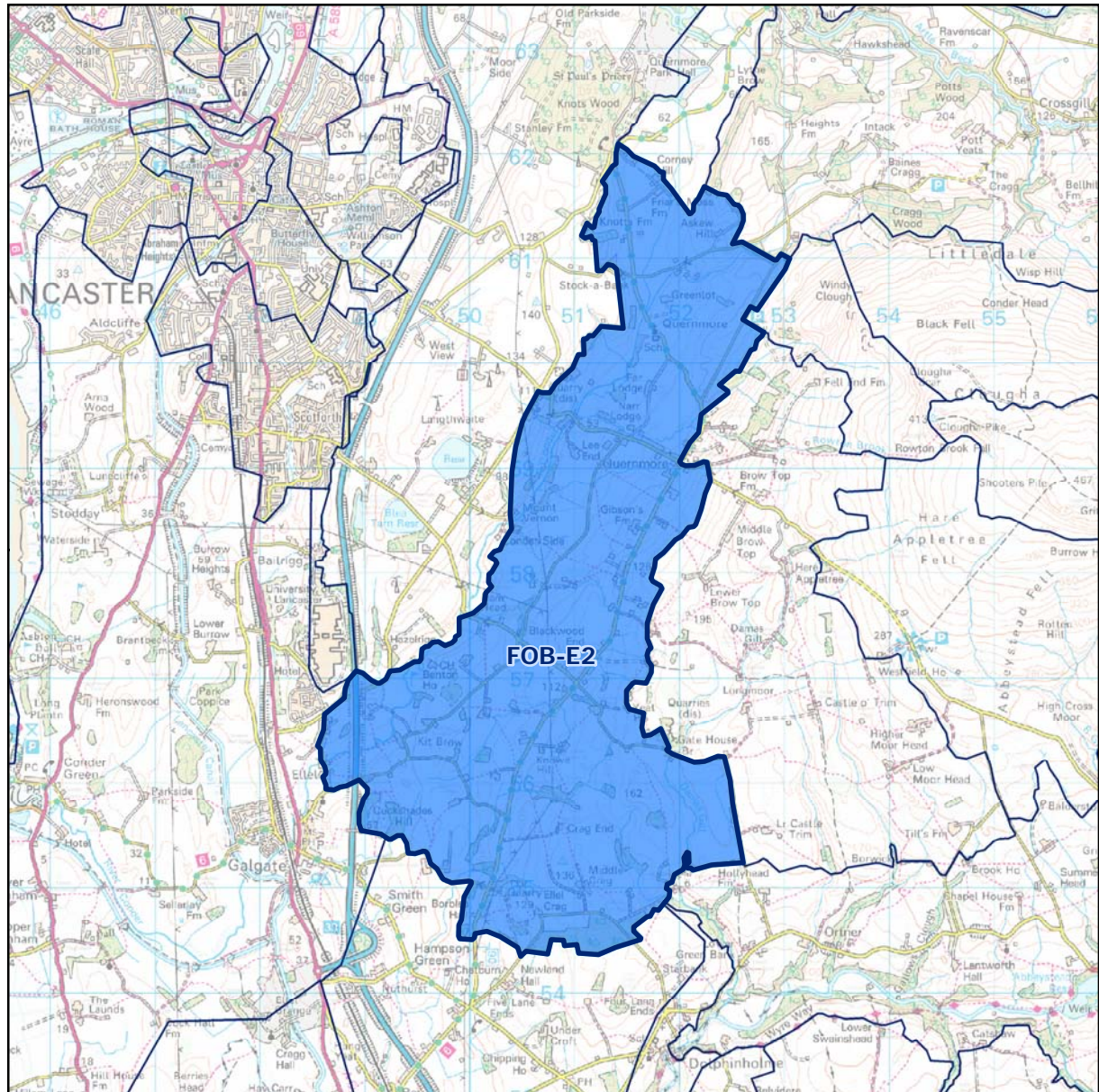
D4
Hare Appletree

Forest of Bowland AONB Landscape Character



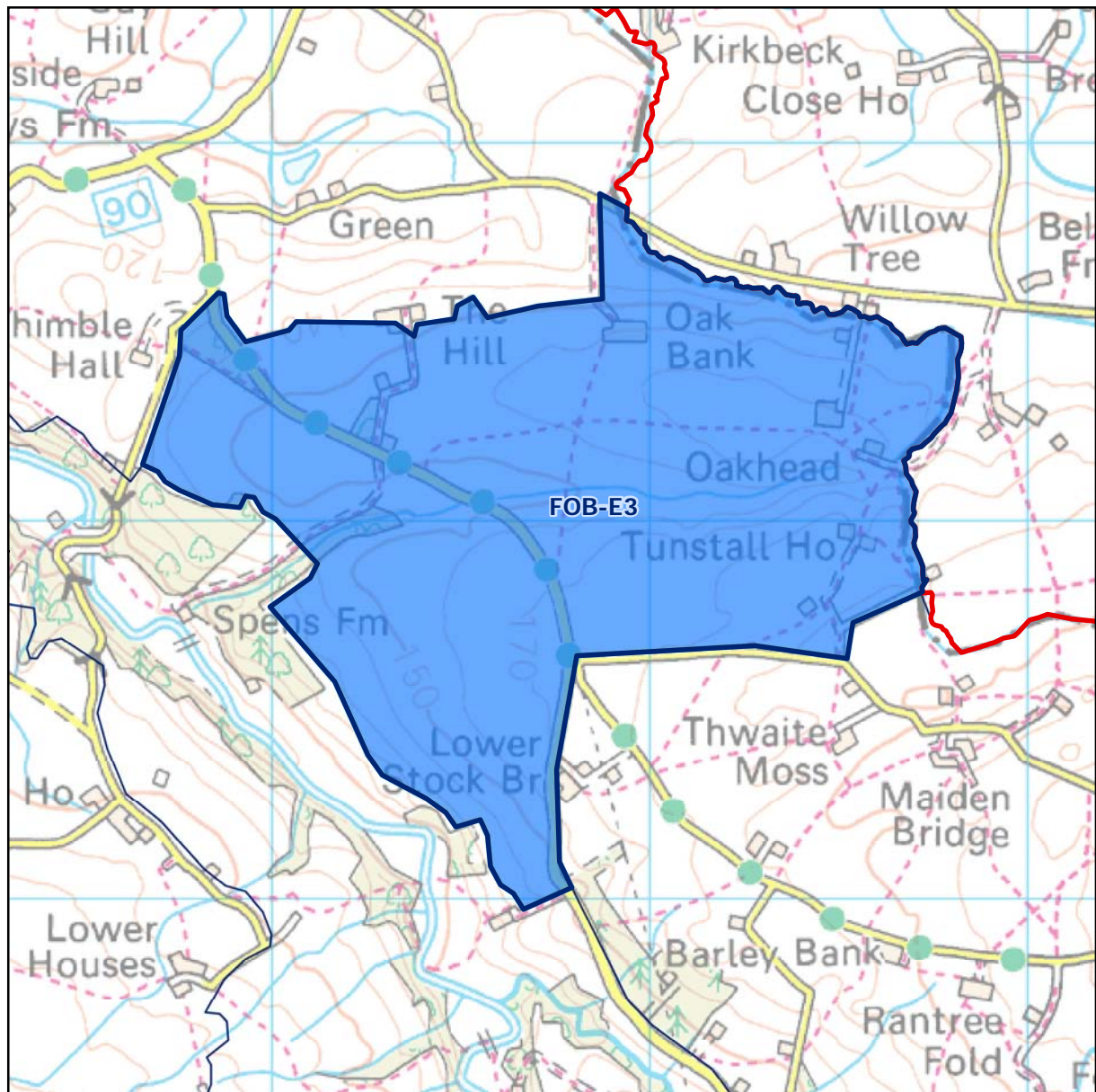
D6
Nicky Nook

Forest of Bowland AONB Landscape Character



E2
Quernmore

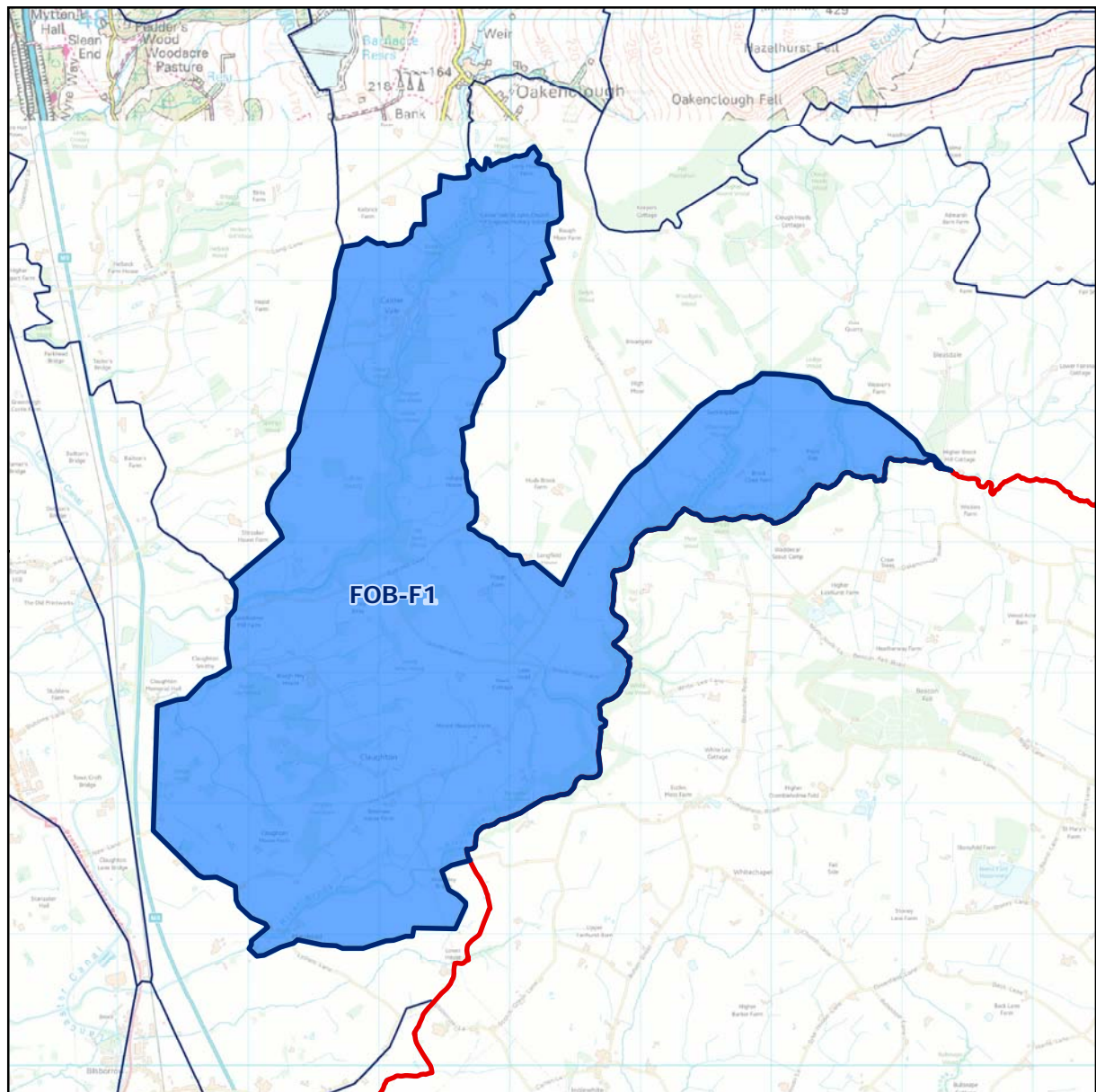
Forest of Bowland AONB Landscape Character



E3
Forest of Mewith

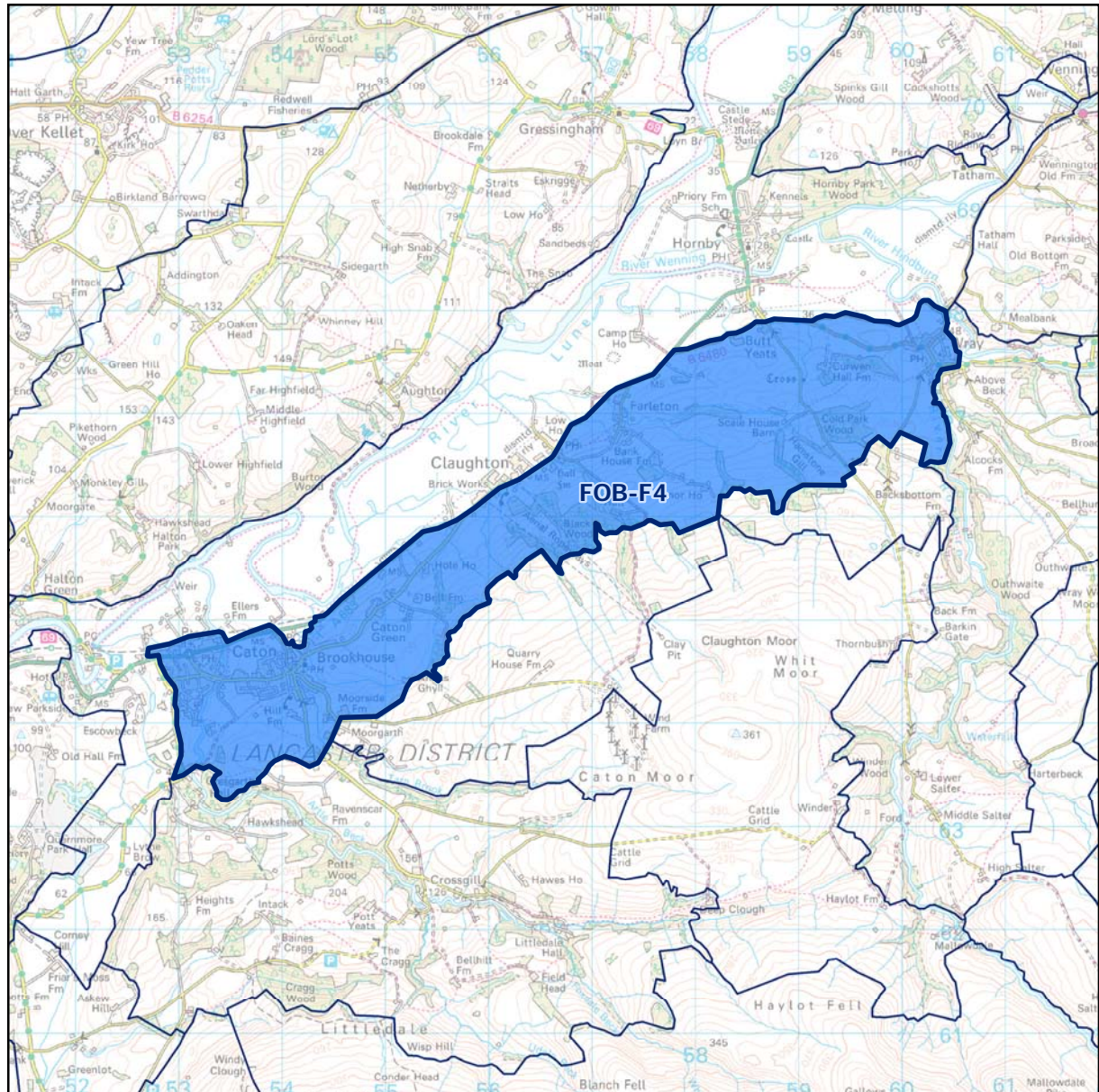
E5
Bleasdale

Forest of Bowland AONB Landscape Character



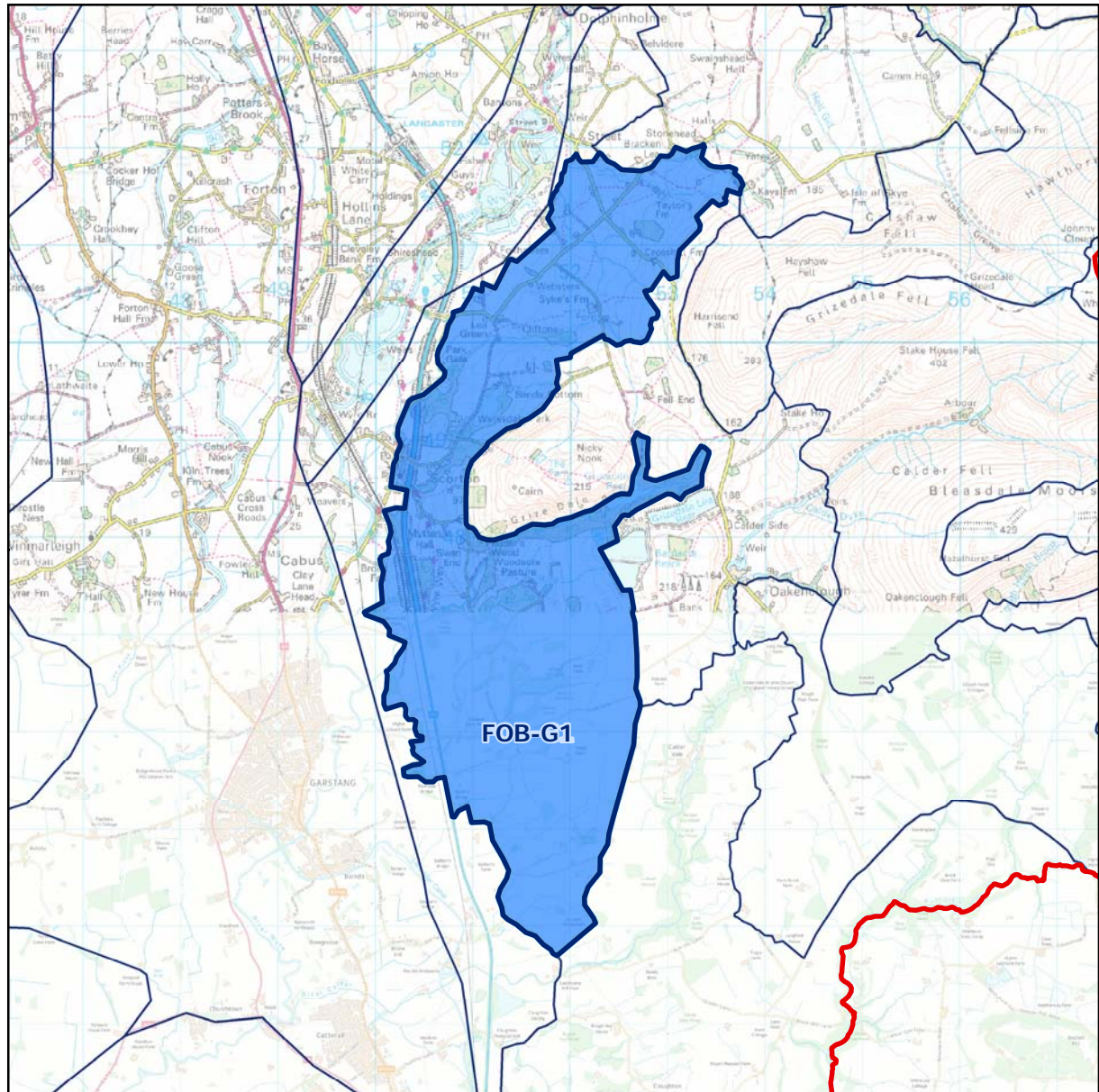
F1
Calder Vale and Brock Valley

Forest of Bowland AONB Landscape Character



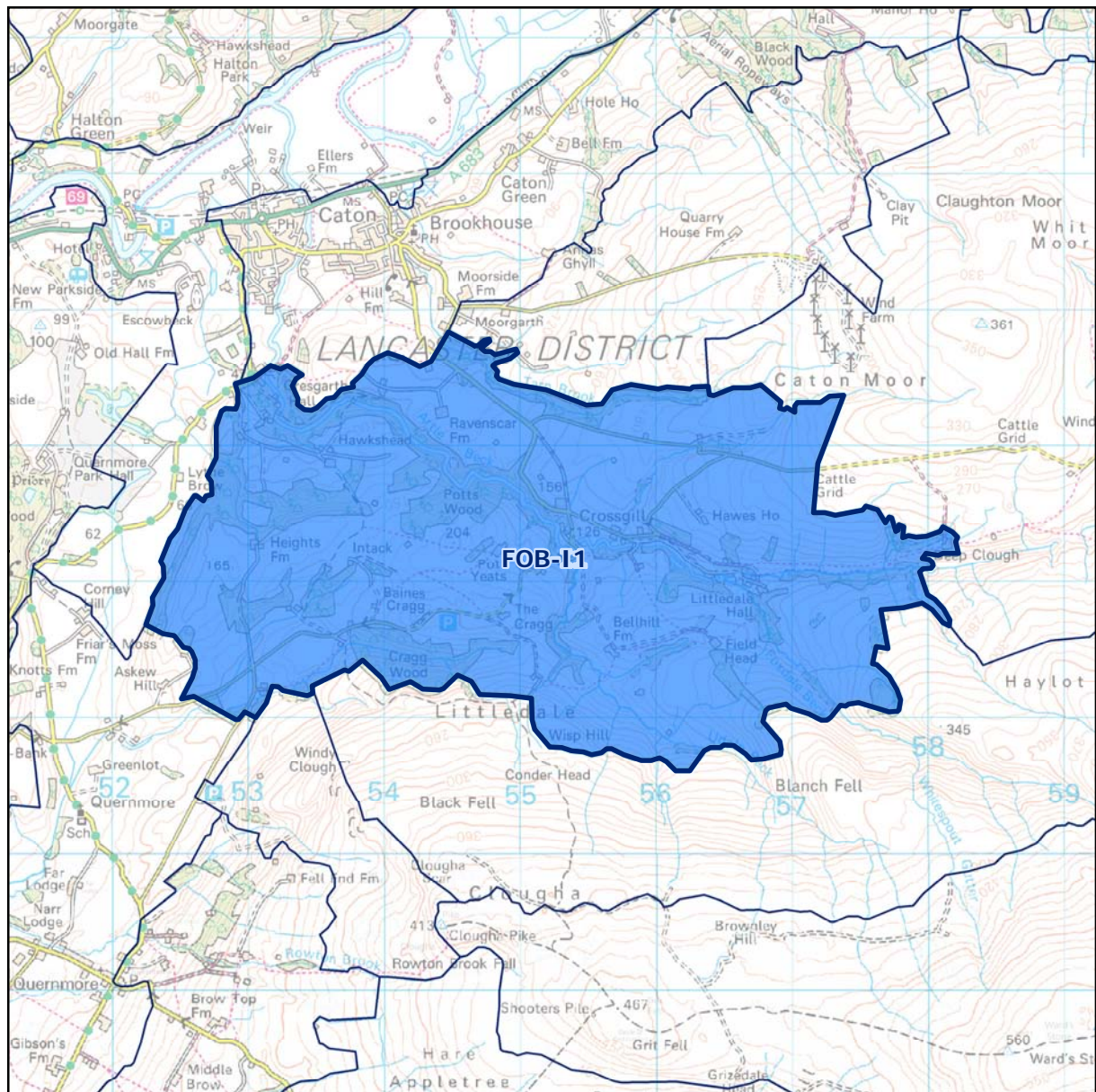
F4
Caton

Forest of Bowland AONB Landscape Character



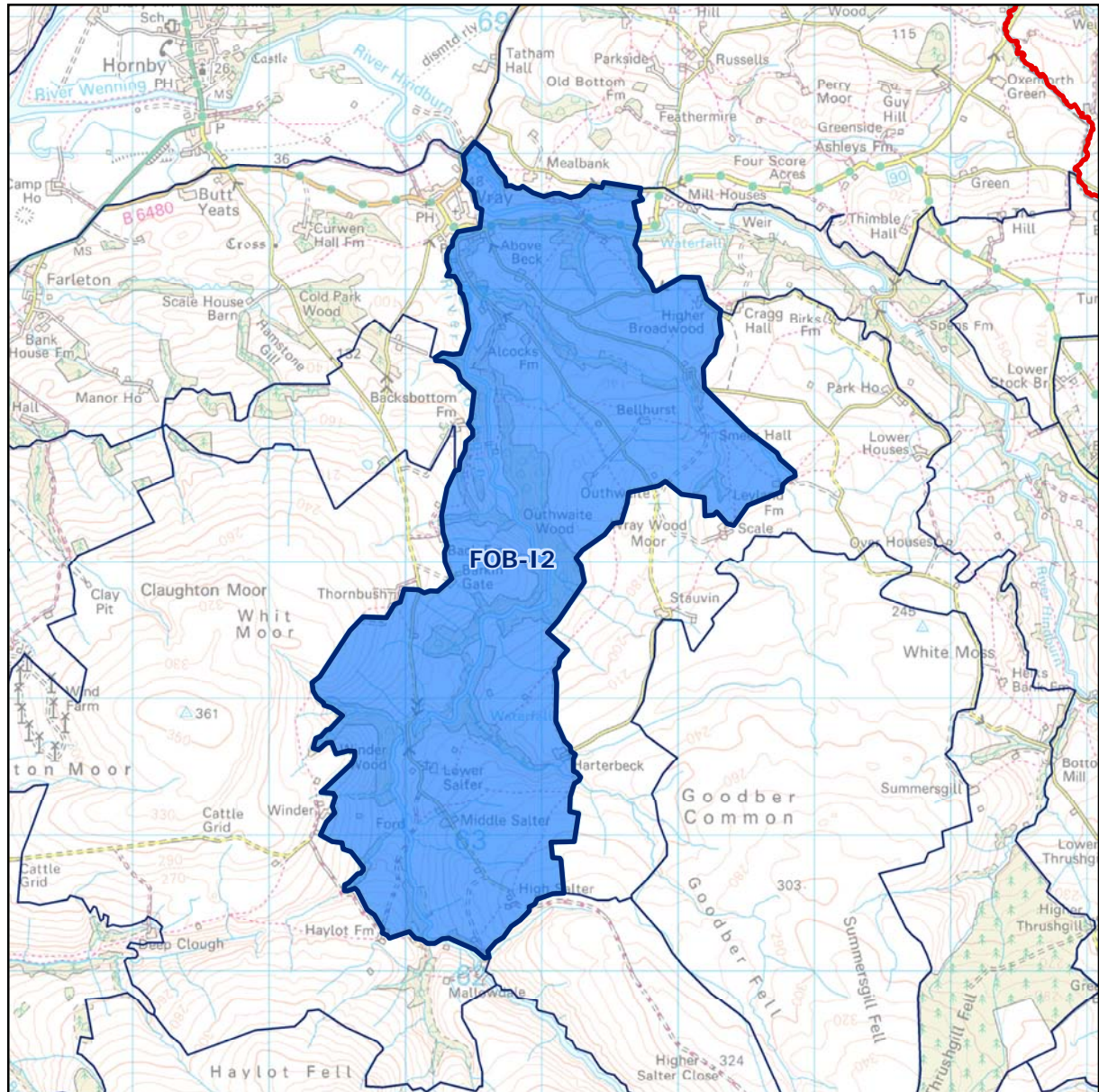
G1
Wyresdale

Forest of Bowland AONB Landscape Character



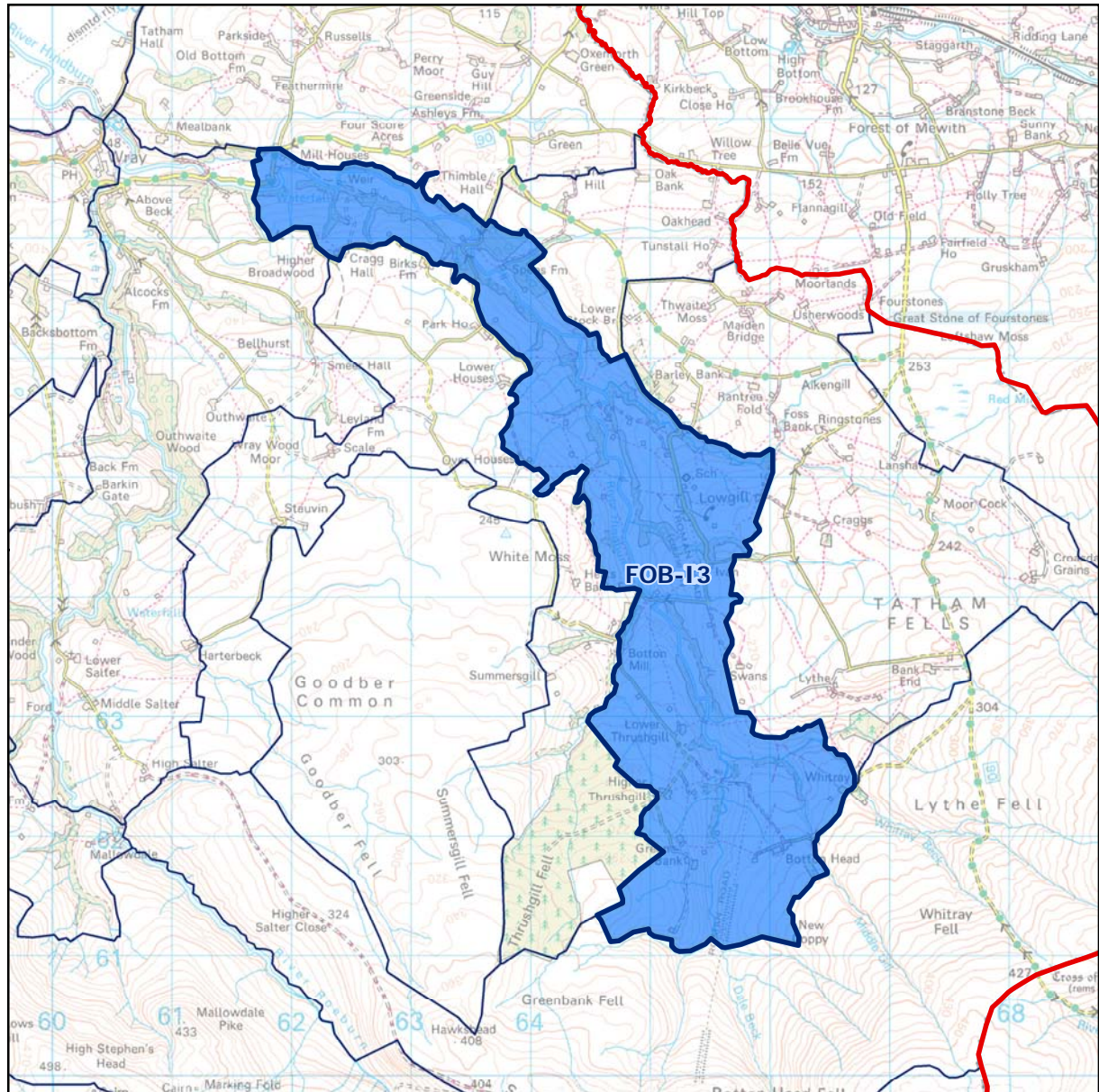
I1
Littledale

Forest of Bowland AONB Landscape Character



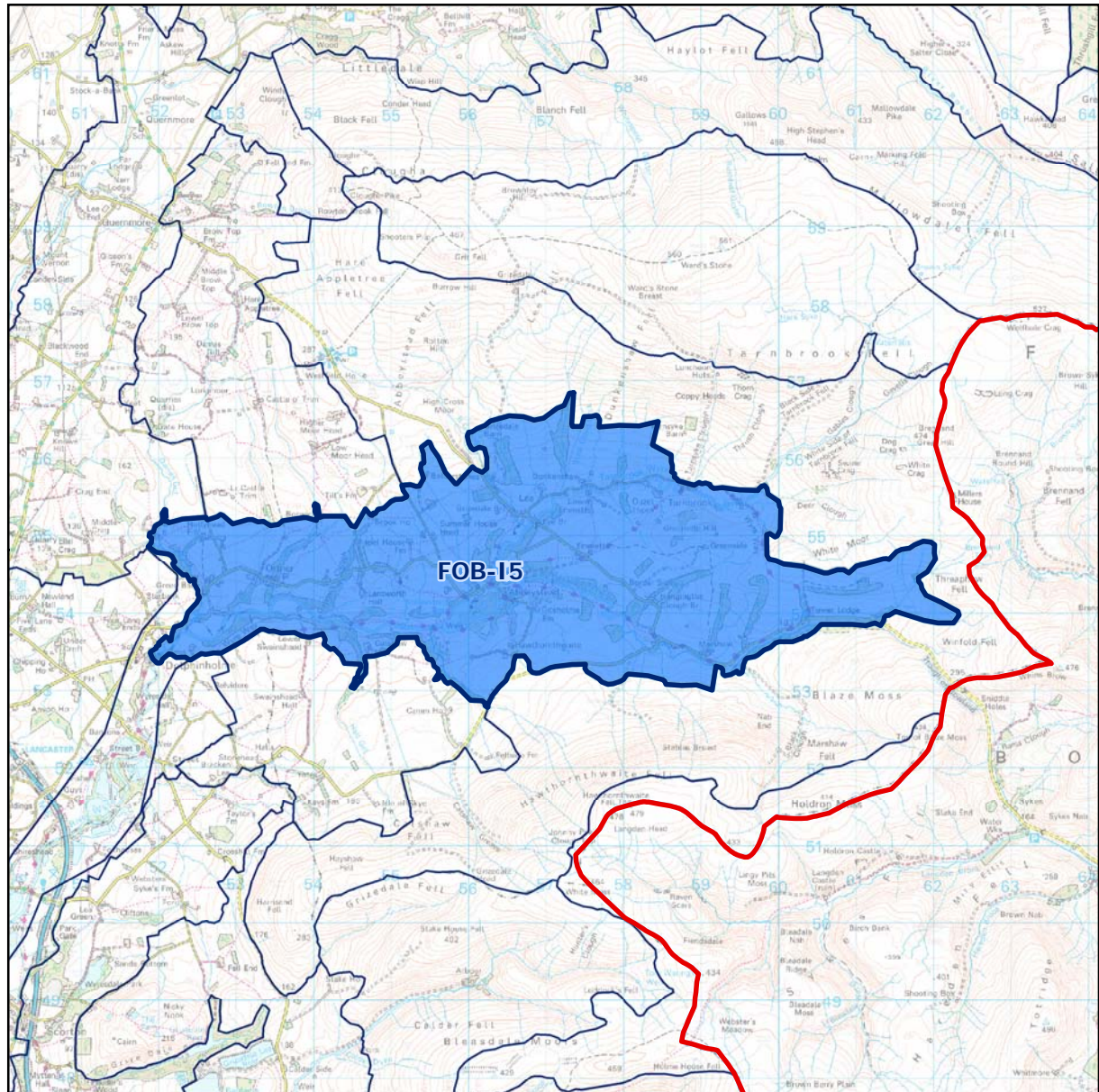
12
Roeburndale

Forest of Bowland AONB Landscape Character



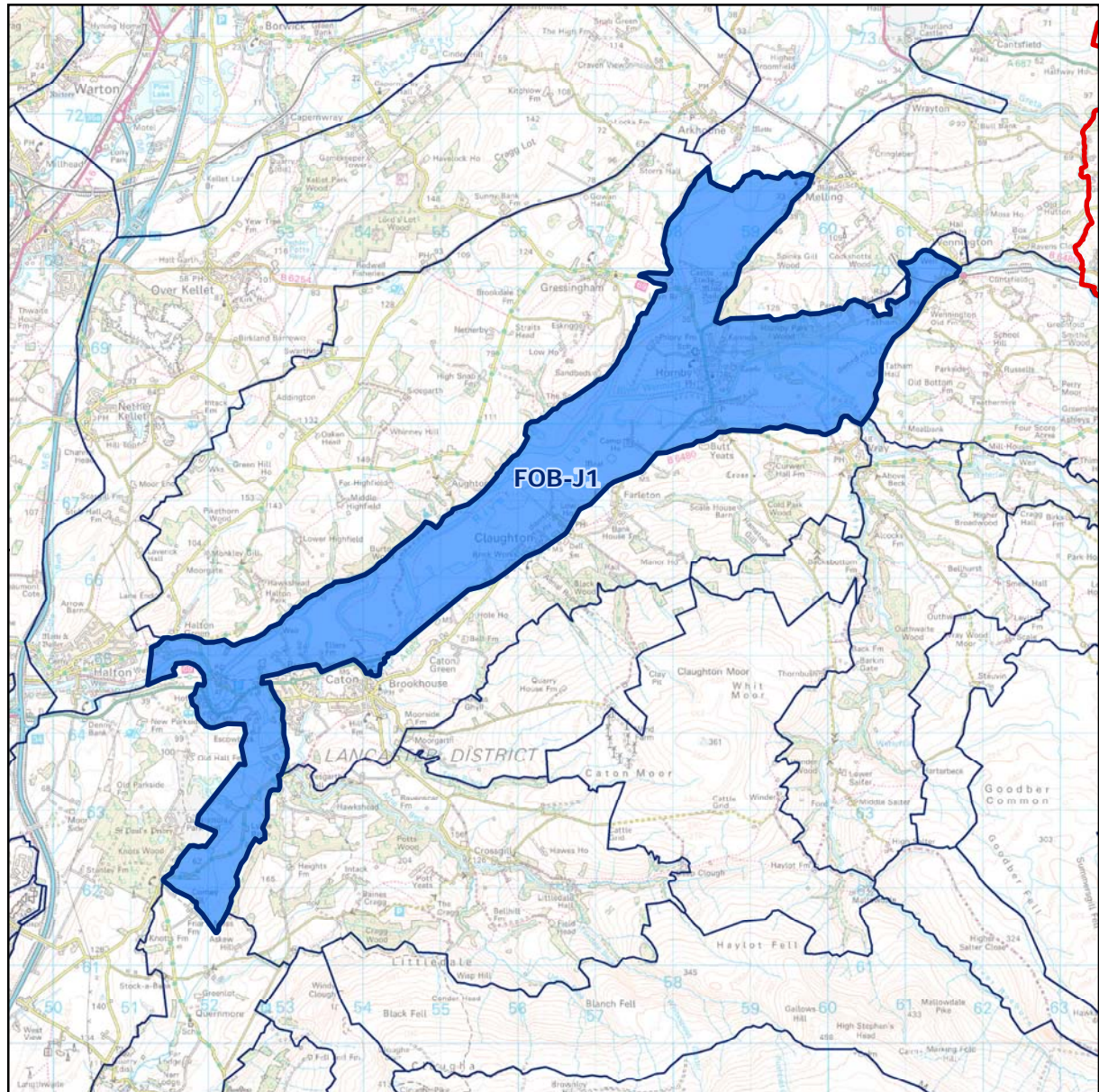
I3
Hindburndale

Forest of Bowland AONB Landscape Character



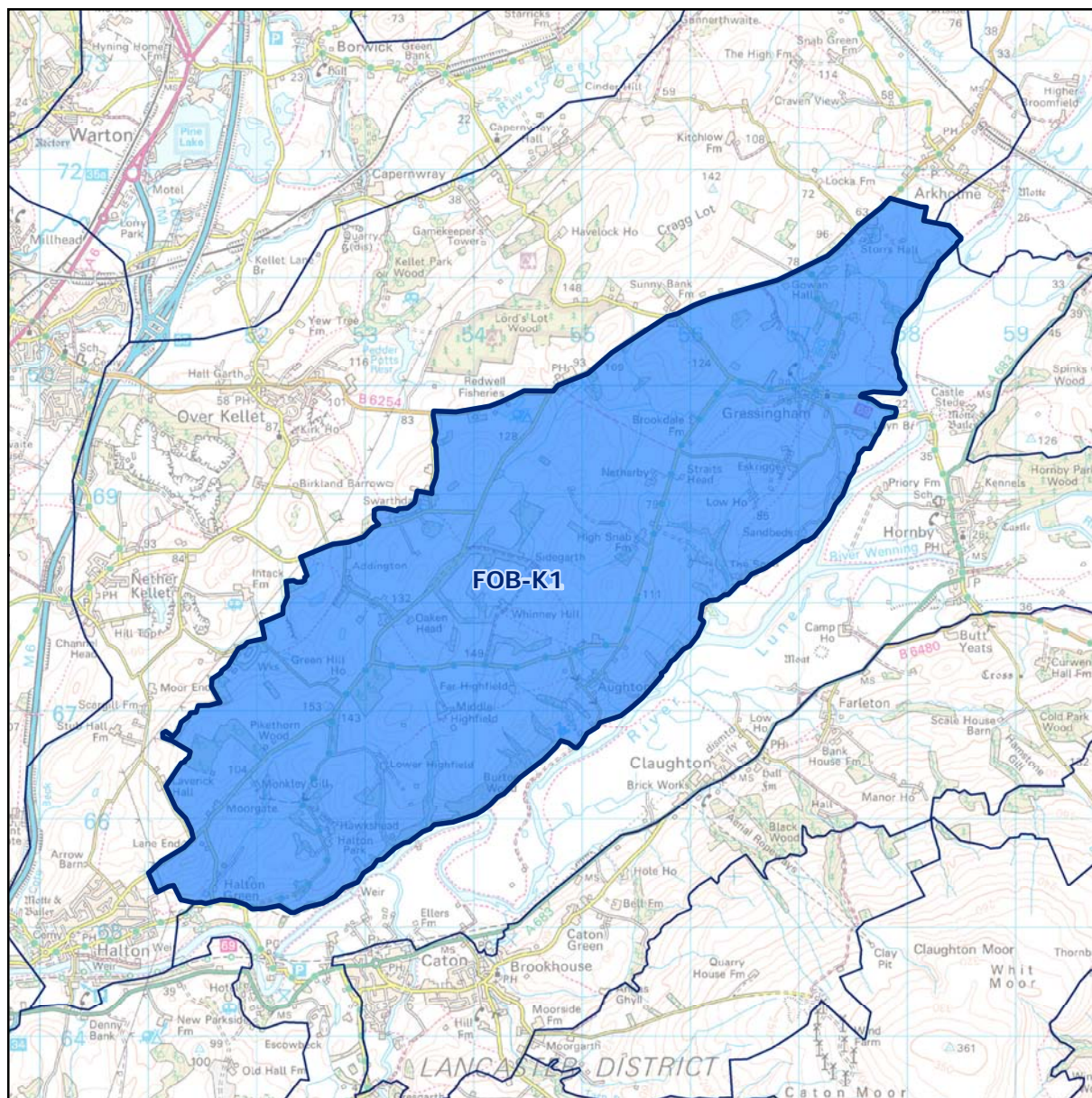
15
Over Wyresdale

Forest of Bowland AONB Landscape Character



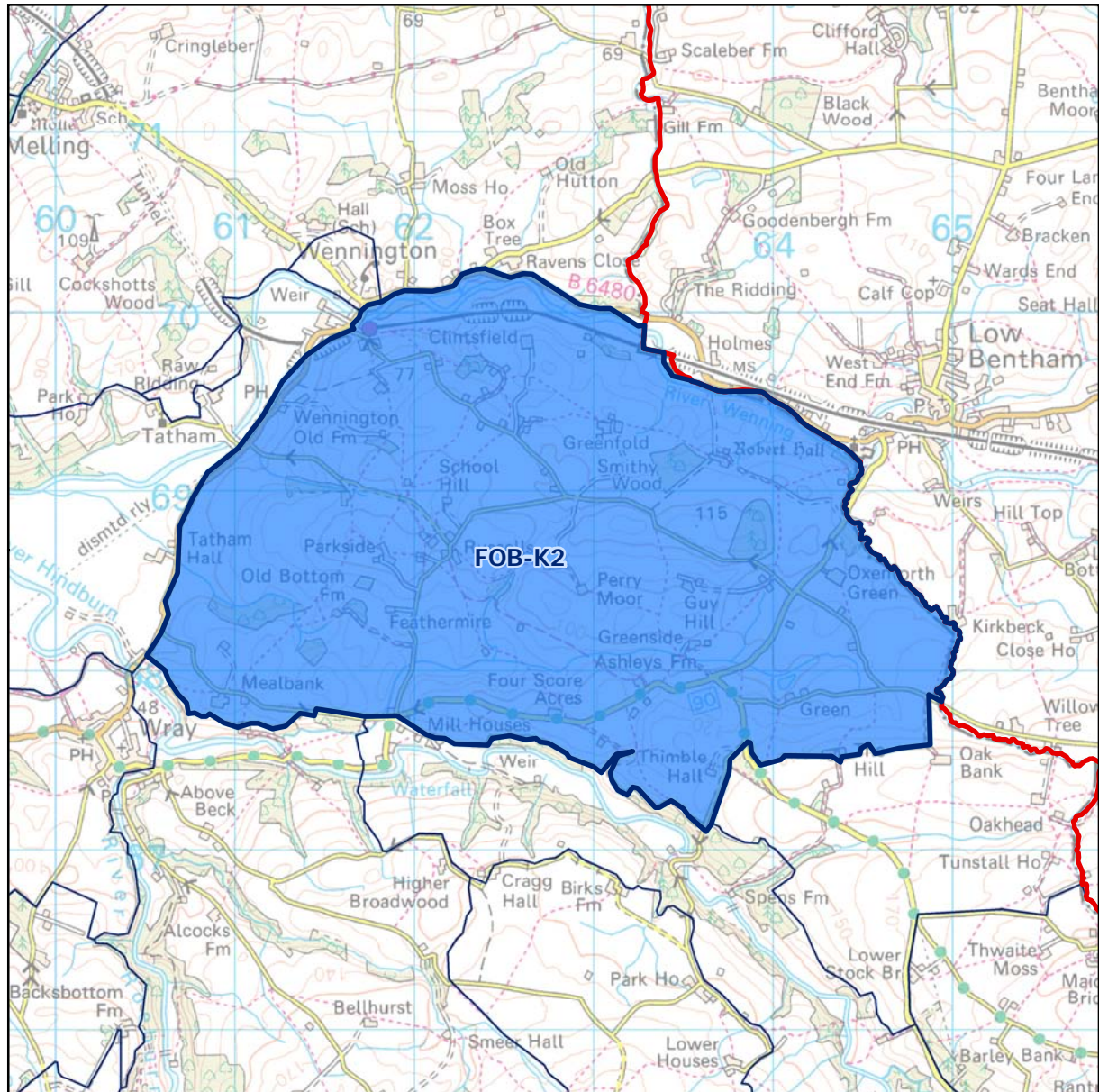
J1
Lune

Forest of Bowland AONB Landscape Character



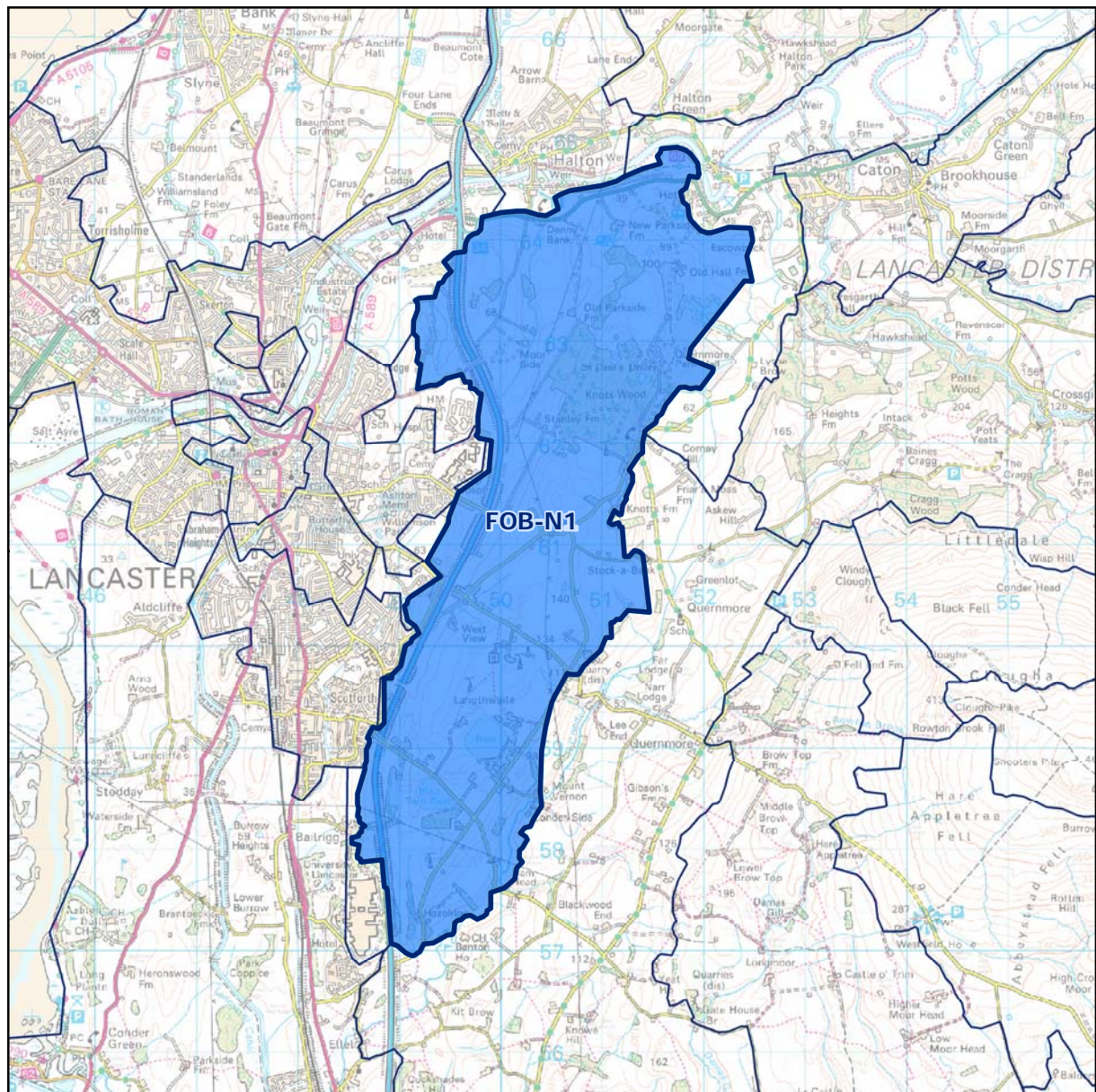
K1
Gressingham

Forest of Bowland AONB Landscape Character



K2
Lower Tatham

Forest of Bowland AONB Landscape Character



N1
Quernmore