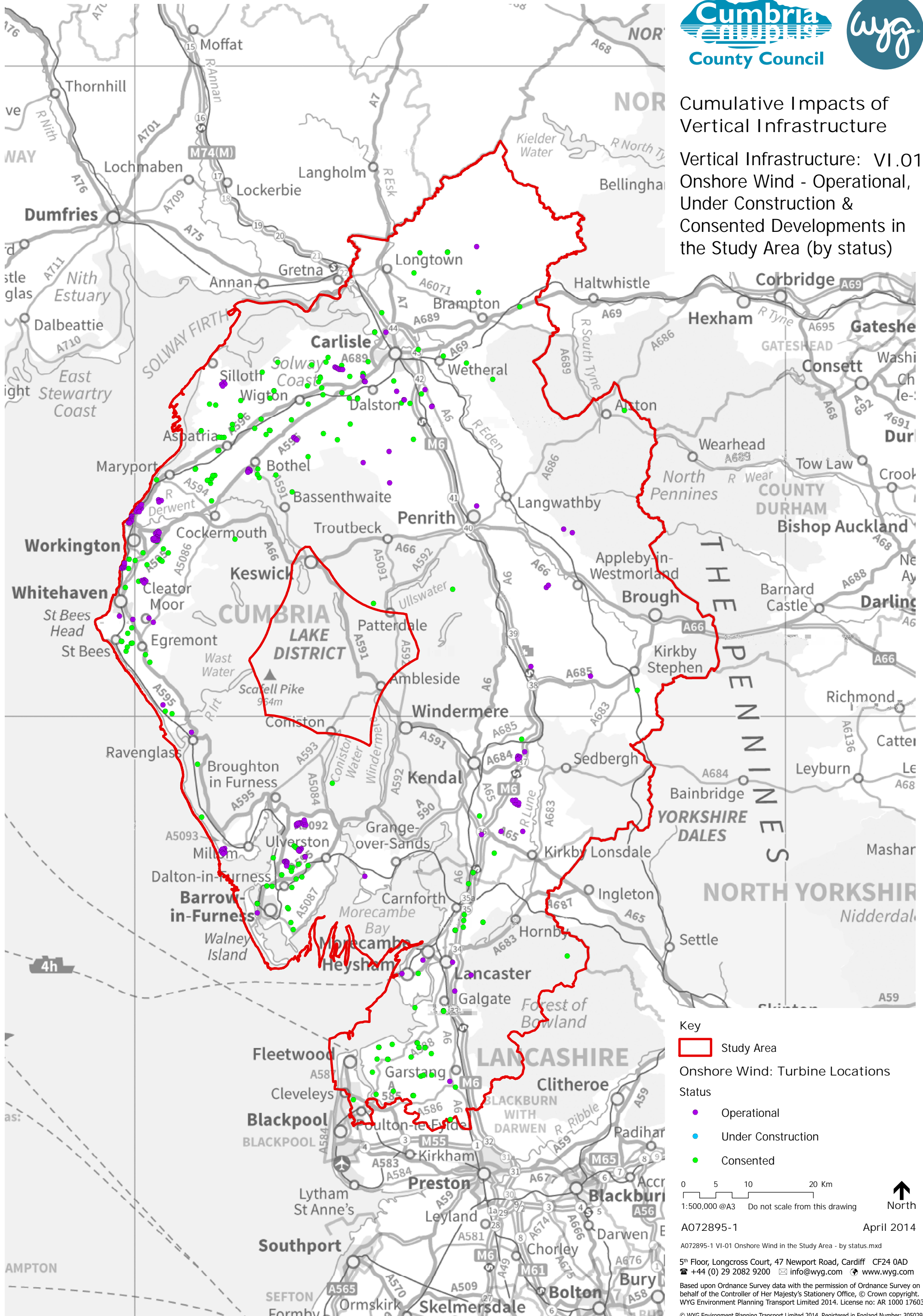


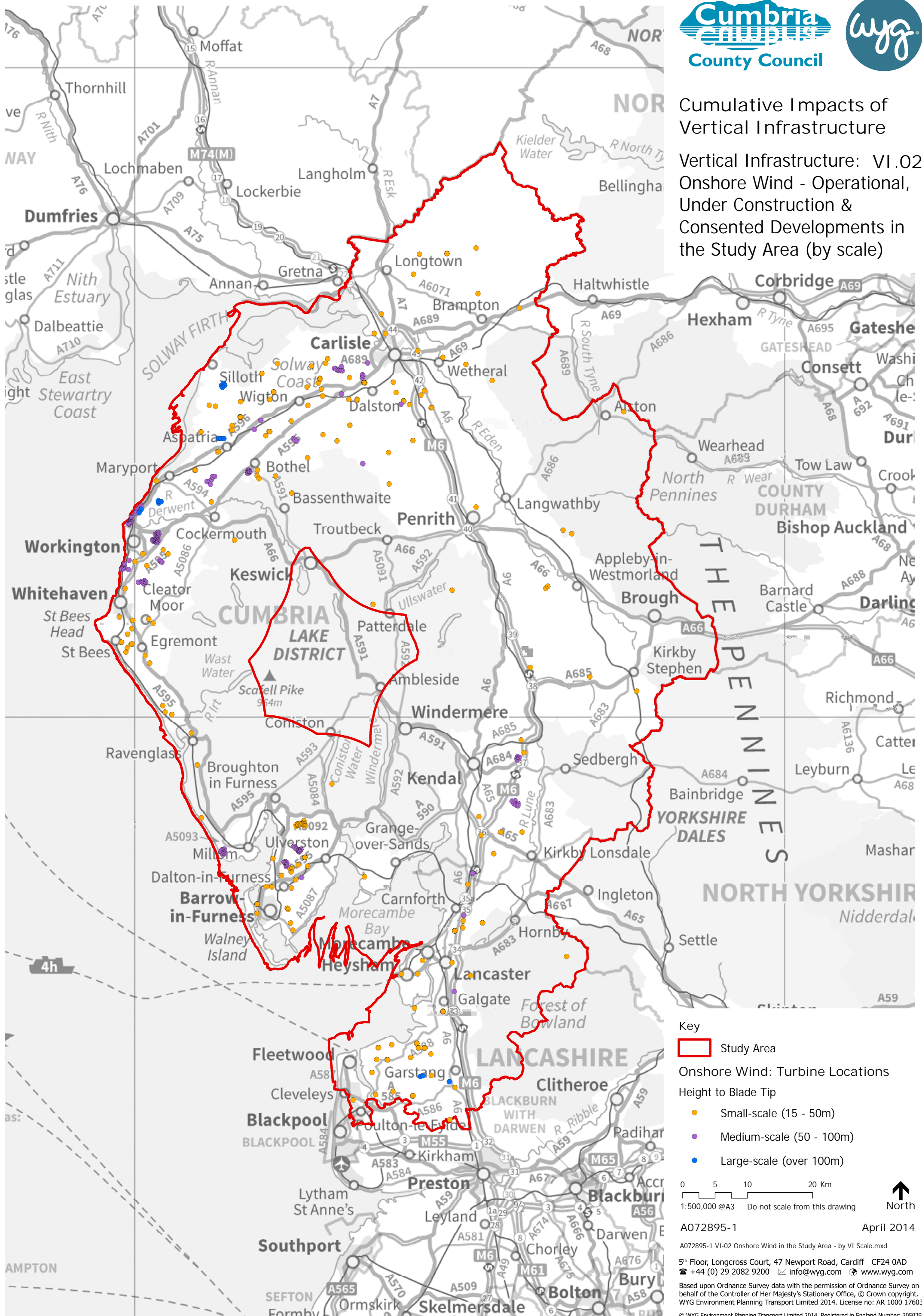
Cumulative Impacts of Vertical Infrastructure

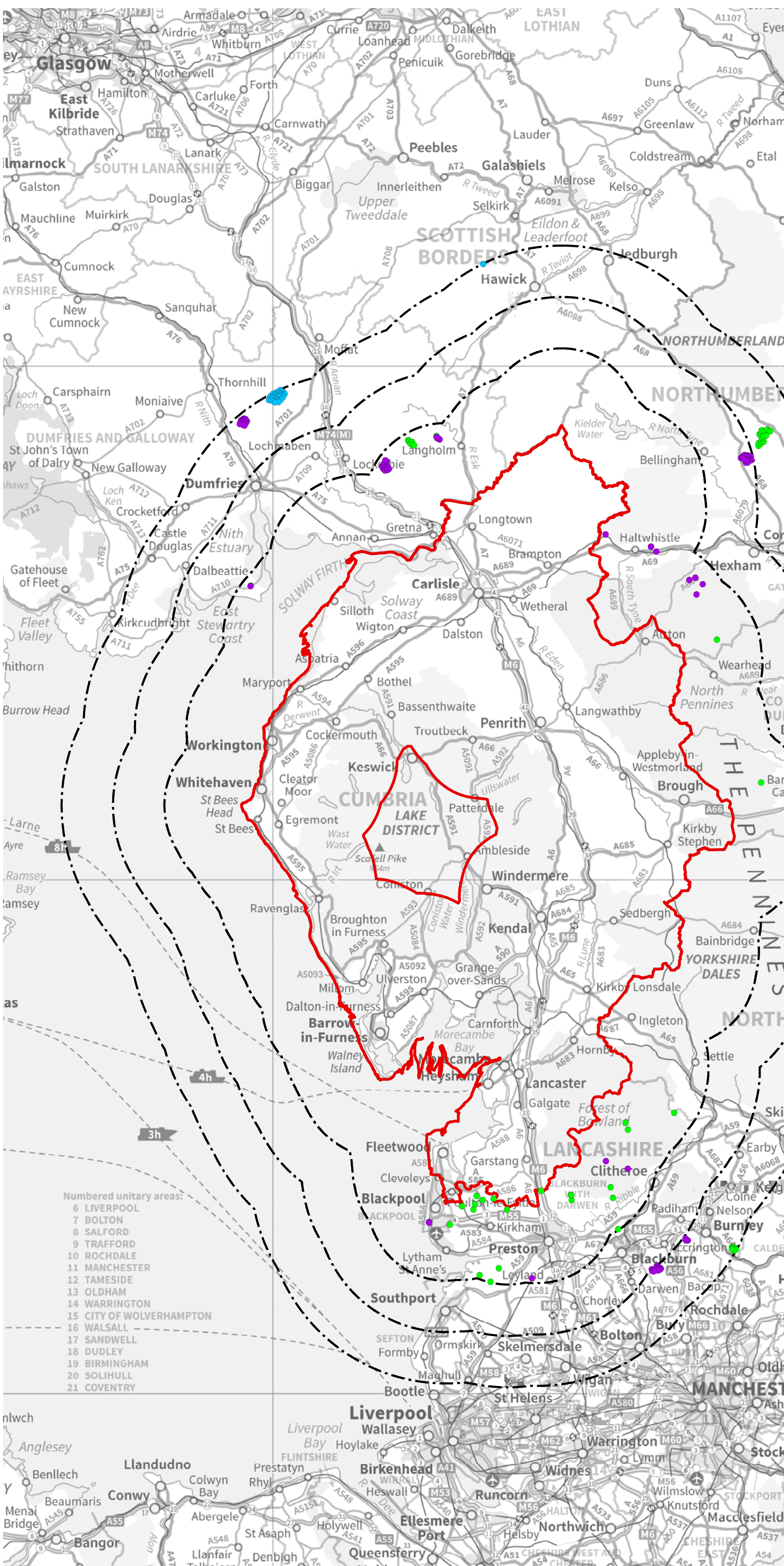
Vertical Infrastructure: VI.01
Onshore Wind - Operational,
Under Construction &
Consented Developments in
the Study Area (by status)



Cumulative Impacts of Vertical Infrastructure

Vertical Infrastructure: VI.02
Onshore Wind - Operational,
Under Construction &
Consented Developments in
the Study Area (by scale)

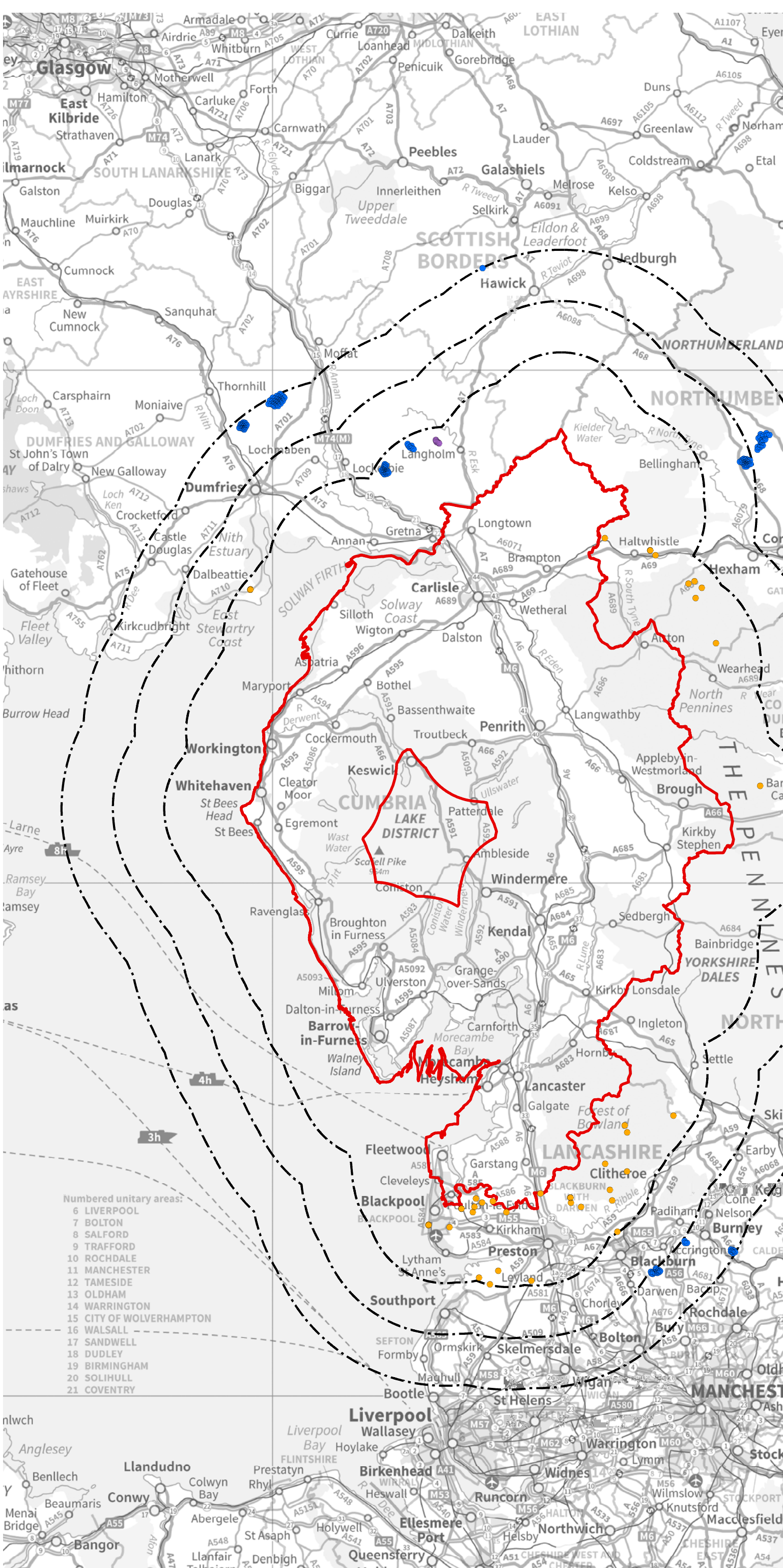




Cumulative Impacts of Vertical Infrastructure

Vertical Infrastructure: VI.03

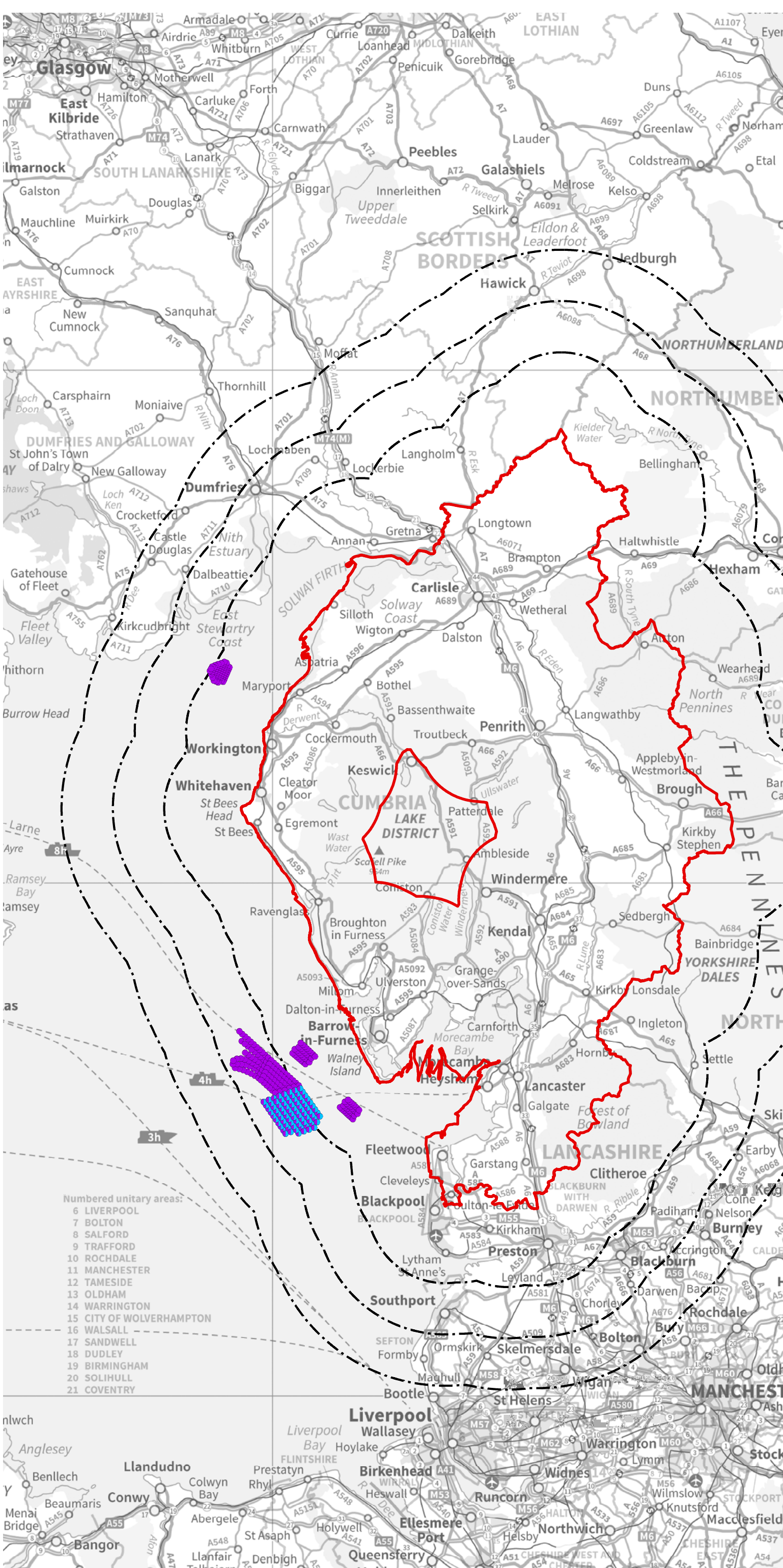
Onshore Wind - Operational, Under Construction & Consented Developments in the Buffer Zones (by status)



Cumulative Impacts of Vertical Infrastructure

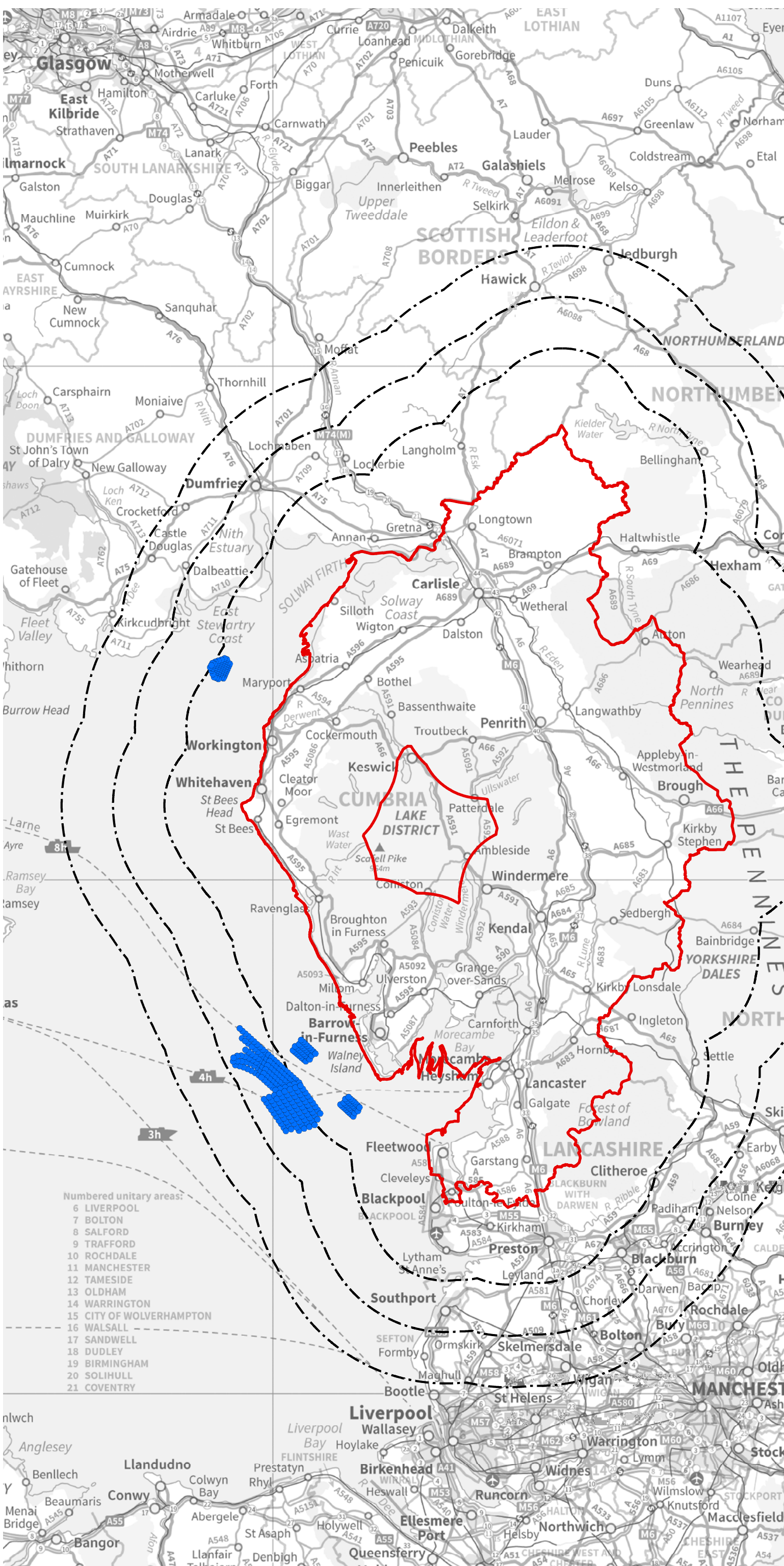
Vertical Infrastructure: VI.04

Onshore Wind - Operational, Under Construction & Consented Developments in the Buffer Zones (by scale)



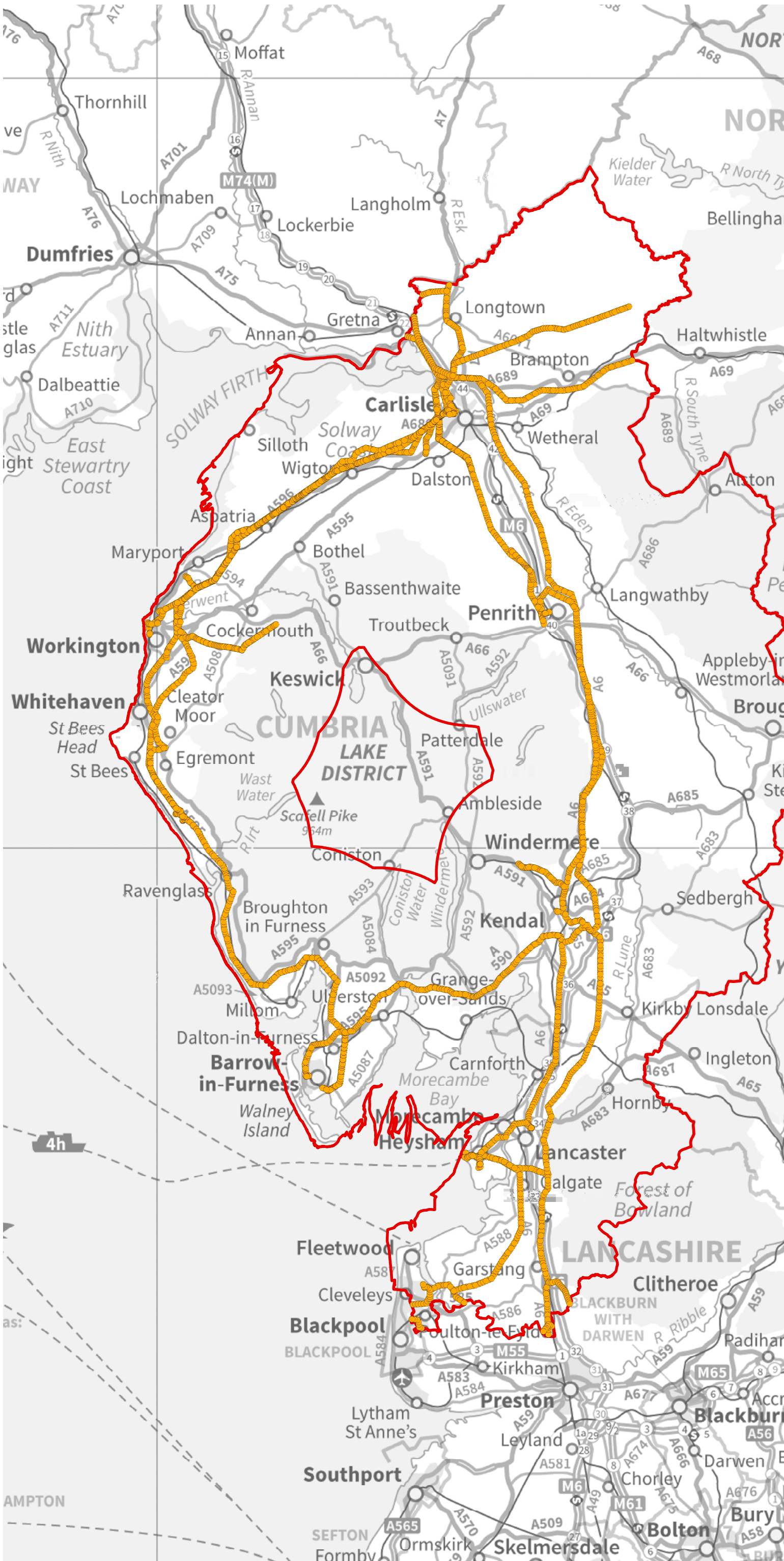
Cumulative Impacts of Vertical Infrastructure

Vertical Infrastructure: VI.05 Offshore Wind - Operational, Under Construction & Consented Developments in the Buffer Zones (by status)



Cumulative Impacts of Vertical Infrastructure

Vertical Infrastructure: VI.06
Offshore Wind - Operational,
Under Construction &
Consented Developments in
the Buffer Zones (by scale)



Cumulative Impacts of Vertical Infrastructure

Vertical Infrastructure: VI.07
Electricity Transmission
Infrastructure in the
Study Area

Key
Study Area

Electricity Transmission: Pylon Locations
Height

- Small-scale (15 - 50m)
- Medium-scale (50 - 100m)
- Large-scale (over 100m)

0 5 10 20 Km
1:500,000 @A3 Do not scale from this drawing



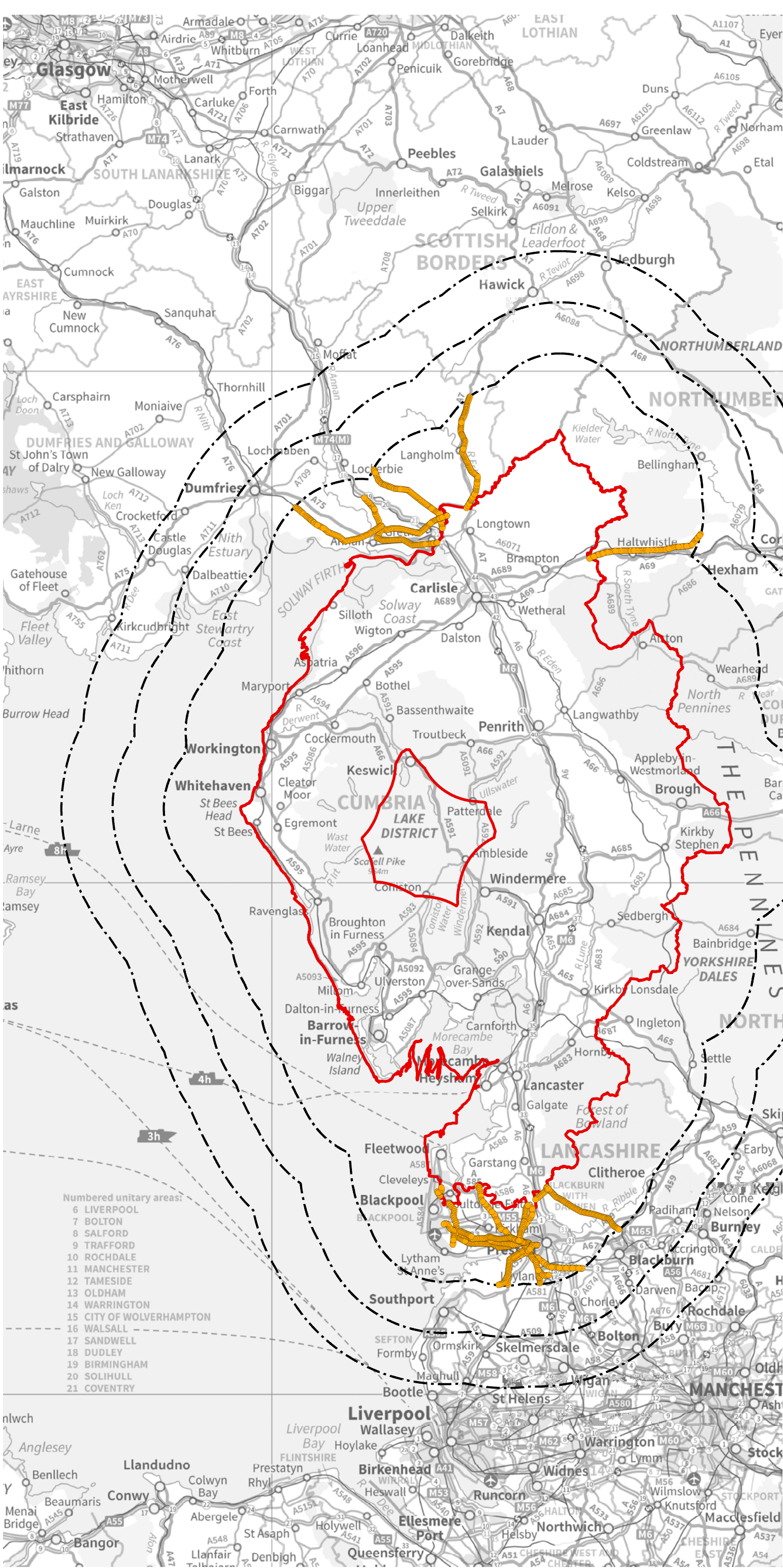
A072895-1 April 2014

A072895-1 VI-07 Electricity Transmission in the Study Area.mxd

5th Floor, Longcross Court, 47 Newport Road, Cardiff CF24 0AD
+44 (0) 29 2082 9200 info@wyg.com www.wyg.com

Based upon Ordnance Survey data with the permission of Ordnance Survey on behalf of the Controller of Her Majesty's Stationery Office, © Crown copyright. WYG Environment Planning Transport Limited 2014. License no: AR 1000 17603

© WYG Environment Planning Transport Limited 2014. Registered in England Number: 3050297



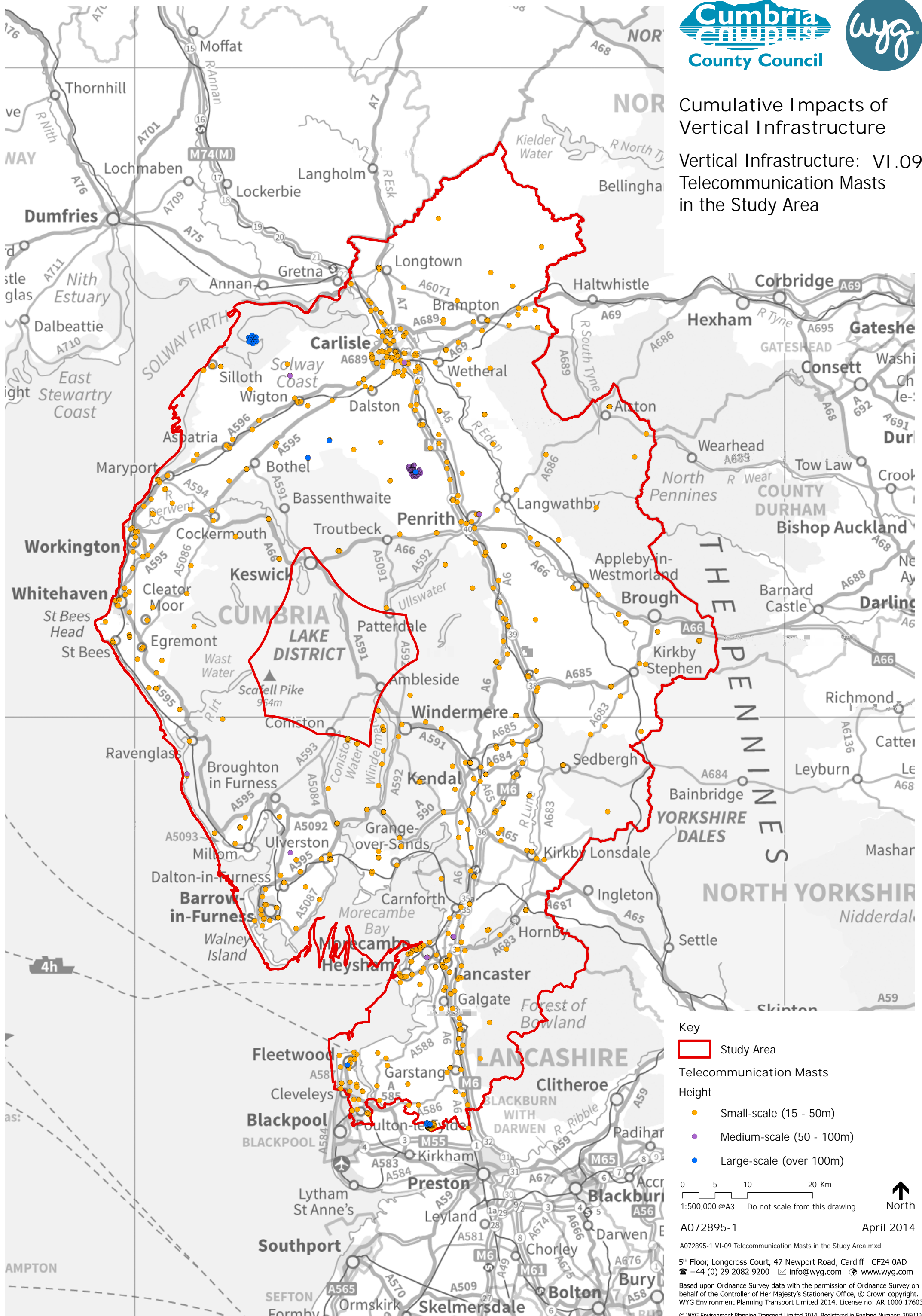
Cumulative Impacts of Vertical Infrastructure

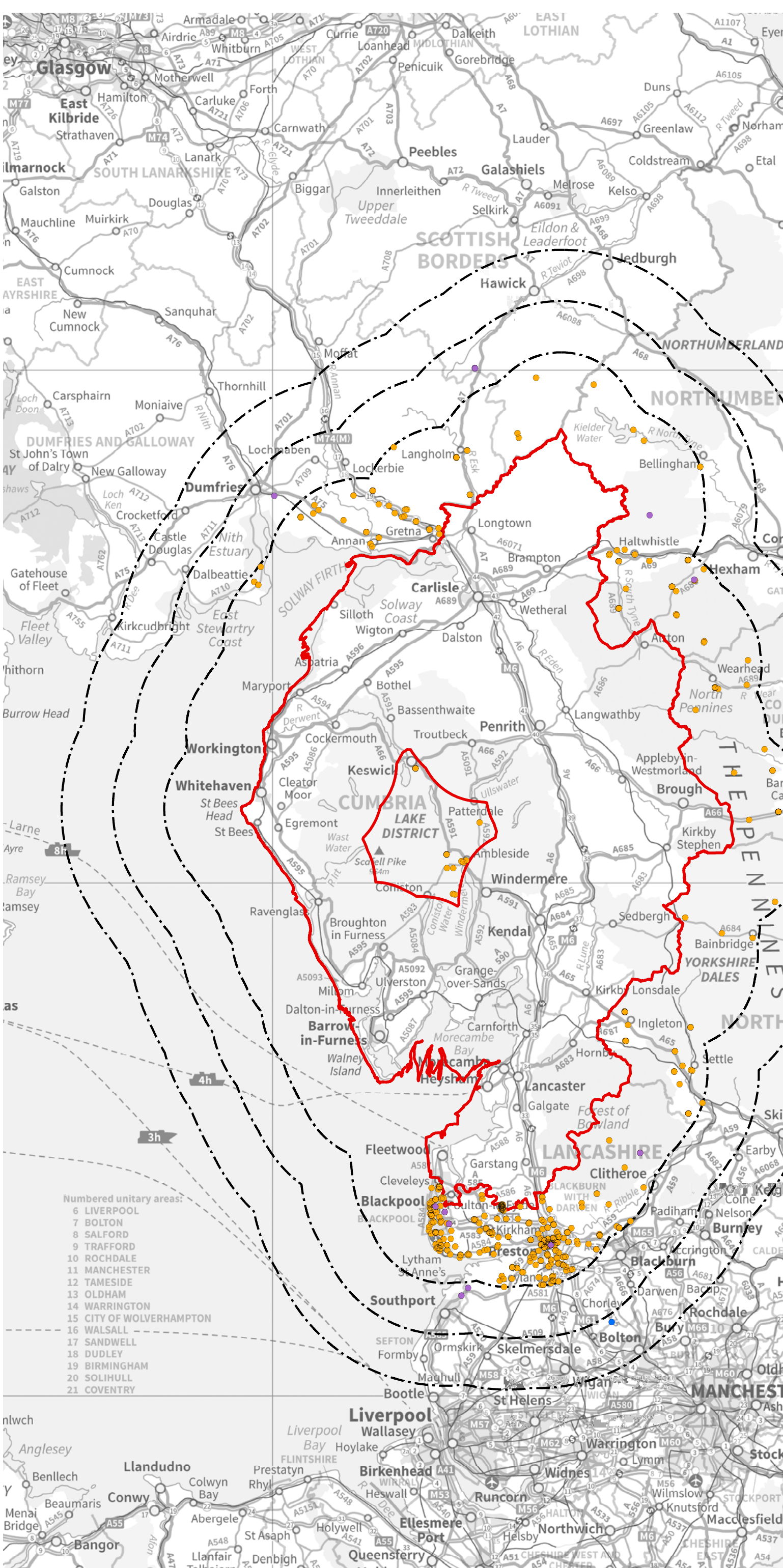
Vertical Infrastructure: VI.08

Electricity Transmission Infrastructure in the Buffer Zones

Cumulative Impacts of Vertical Infrastructure

Vertical Infrastructure: VI.09
Telecommunication Masts in the Study Area



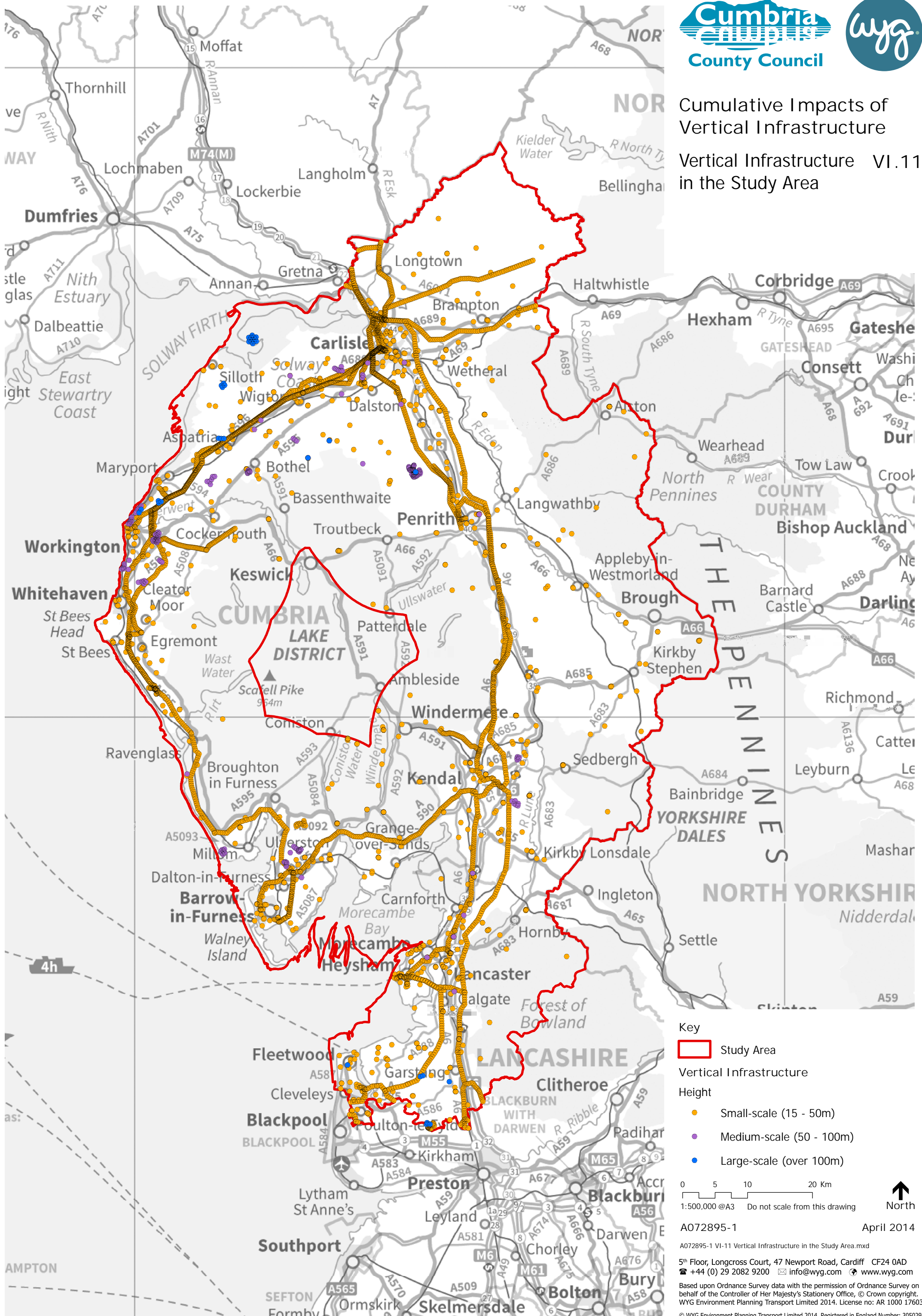


Cumulative Impacts of Vertical Infrastructure

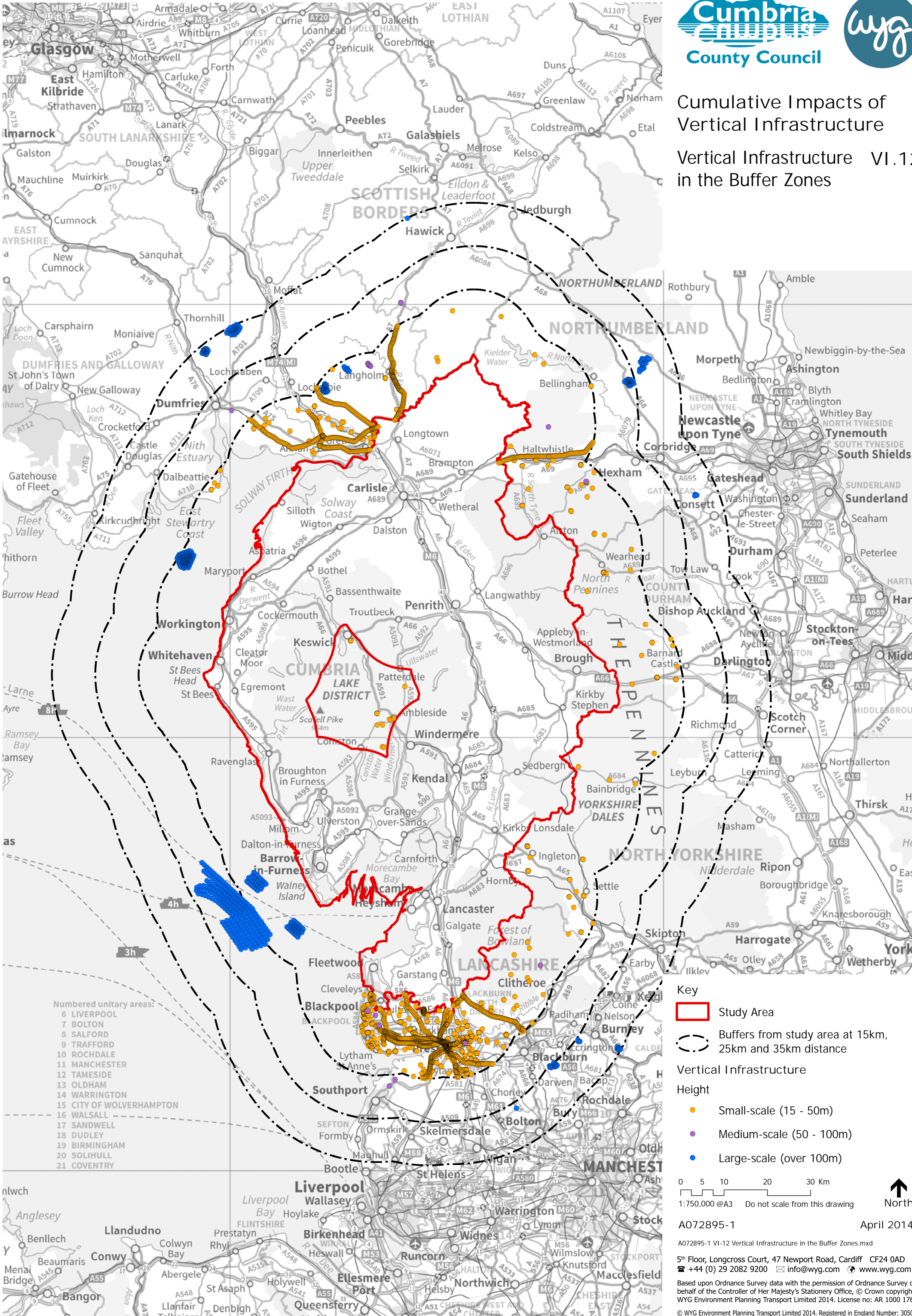
Vertical Infrastructure: VI.10 Telecommunication Masts in the Buffer Zones

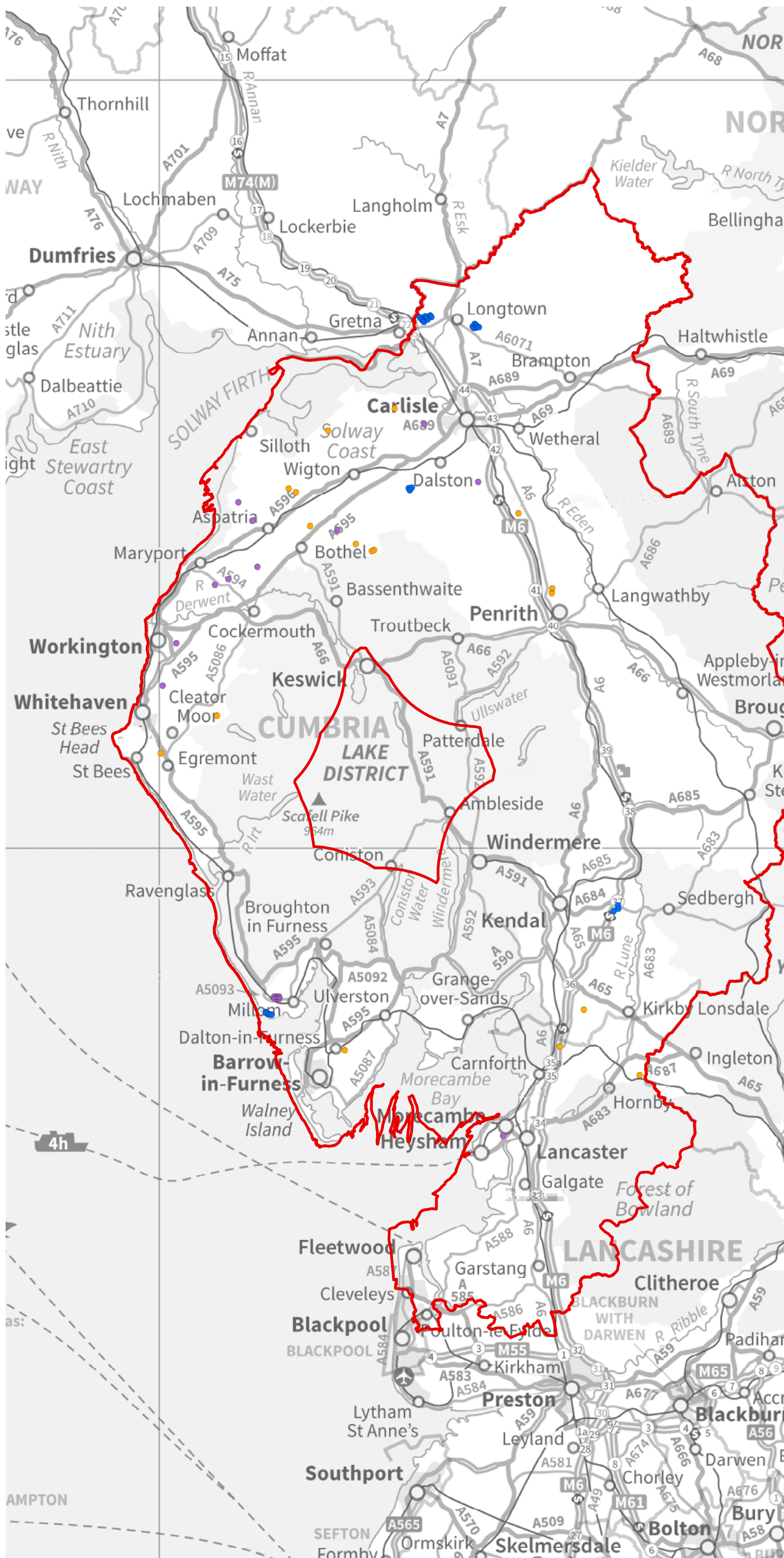
Cumulative Impacts of Vertical Infrastructure

Vertical Infrastructure VI.11
in the Study Area



Cumulative Impacts of
Vertical Infrastructure
Vertical Infrastructure VI.12
in the Buffer Zones





Cumulative Impacts of
Vertical Infrastructure

Vertical Infrastructure: VI.13
Onshore Wind -
Developments in Planning
in the Study Area (by scale)

Key

Study Area

Onshore Wind: Turbine Locations

Height to Blade Tip

- Small-scale (15 - 50m)
- Medium-scale (50 - 100m)
- Large-scale (over 100m)

0 5 10 20 Km

1:500,000 @A3 Do not scale from this drawing

North

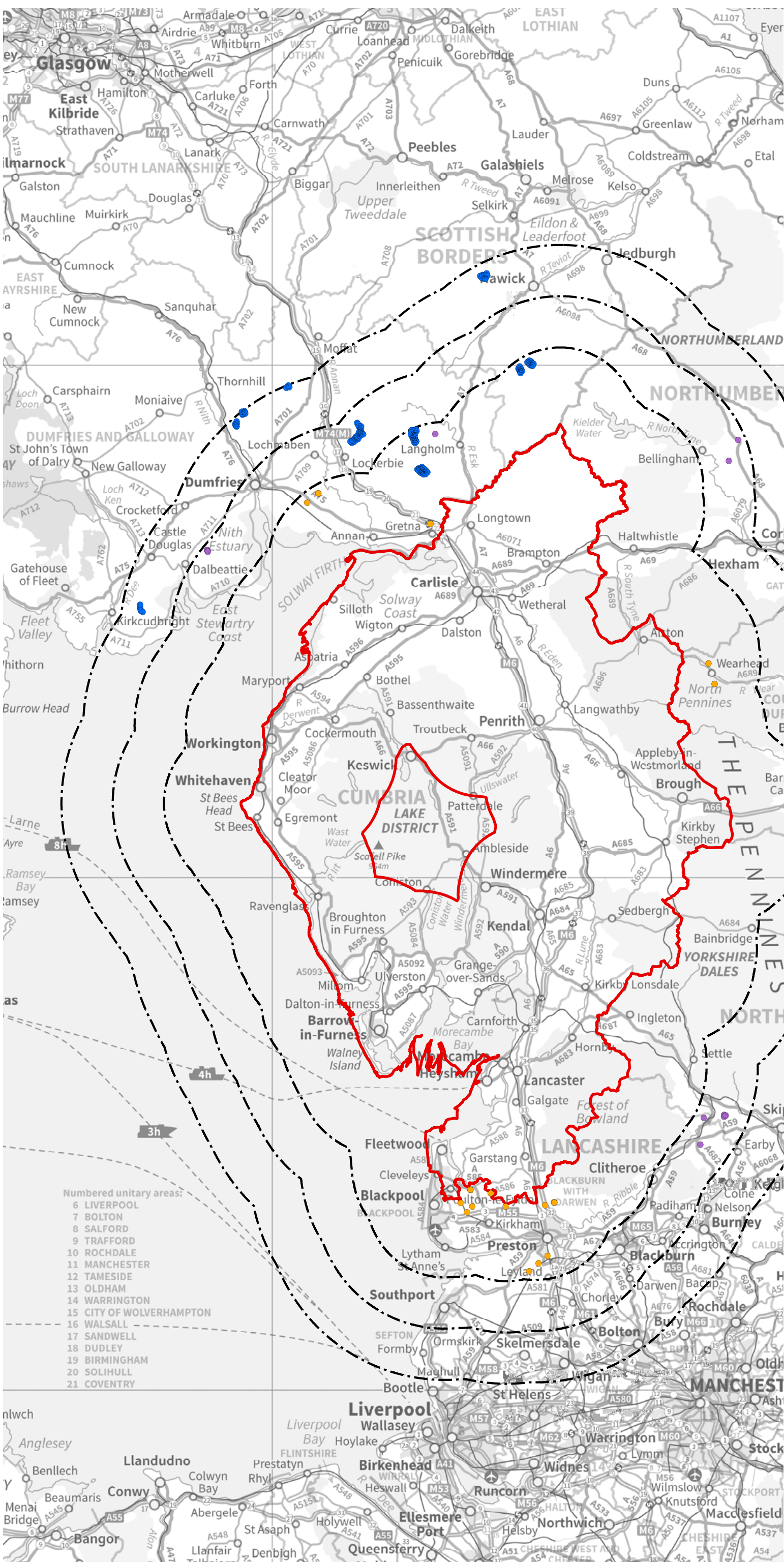
A072895-1 April 2014

A072895-1 VI-13 Onshore Wind in Planning in the Study Area - by scale.mxd

5th Floor, Longcross Court, 47 Newport Road, Cardiff CF24 0AD
☎ +44 (0) 29 2082 9200 ✉ info@wyg.com 🌐 www.wyg.com

Based upon Ordnance Survey data with the permission of Ordnance Survey on behalf of the Controller of Her Majesty's Stationery Office, © Crown copyright. WYG Environment Planning Transport Limited 2014. License no: AR 1000 17603

© WYG Environment Planning Transport Limited 2014. Registered in England Number: 3050297



Cumulative Impacts of Vertical Infrastructure

Vertical Infrastructure: VI.14

Onshore Wind - Developments in Planning in the Buffer Zones (by scale)

Cumulative Impacts of Vertical Infrastructure

Vertical Infrastructure: VI.15
Clustering in Landscape Areas

