

## Cumulative Impacts of Vertical Infrastructure

Landscape Areas: SUS.01  
Susceptibility to small-scale vertical infrastructure

- Key
- Study Area
  - Susceptibility
    - High
    - Moderate
    - Slight
    - Urban Areas

0 5 10 20 Km  
1:500,000 @A3 Do not scale from this drawing

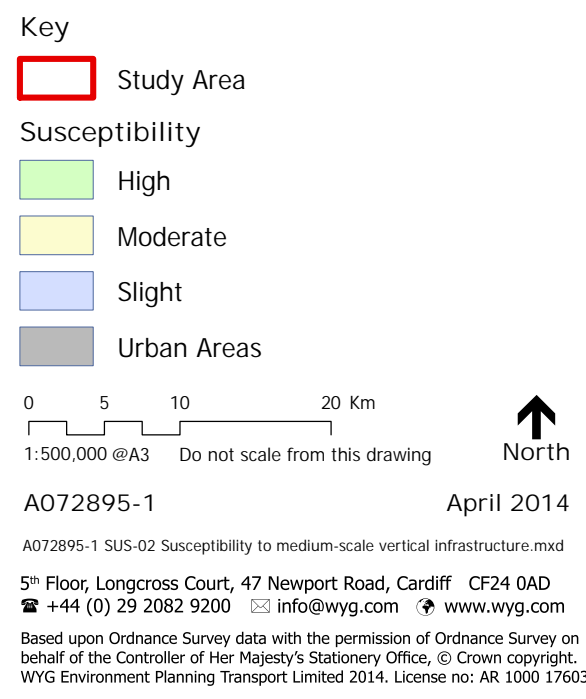


A072895-1 April 2014



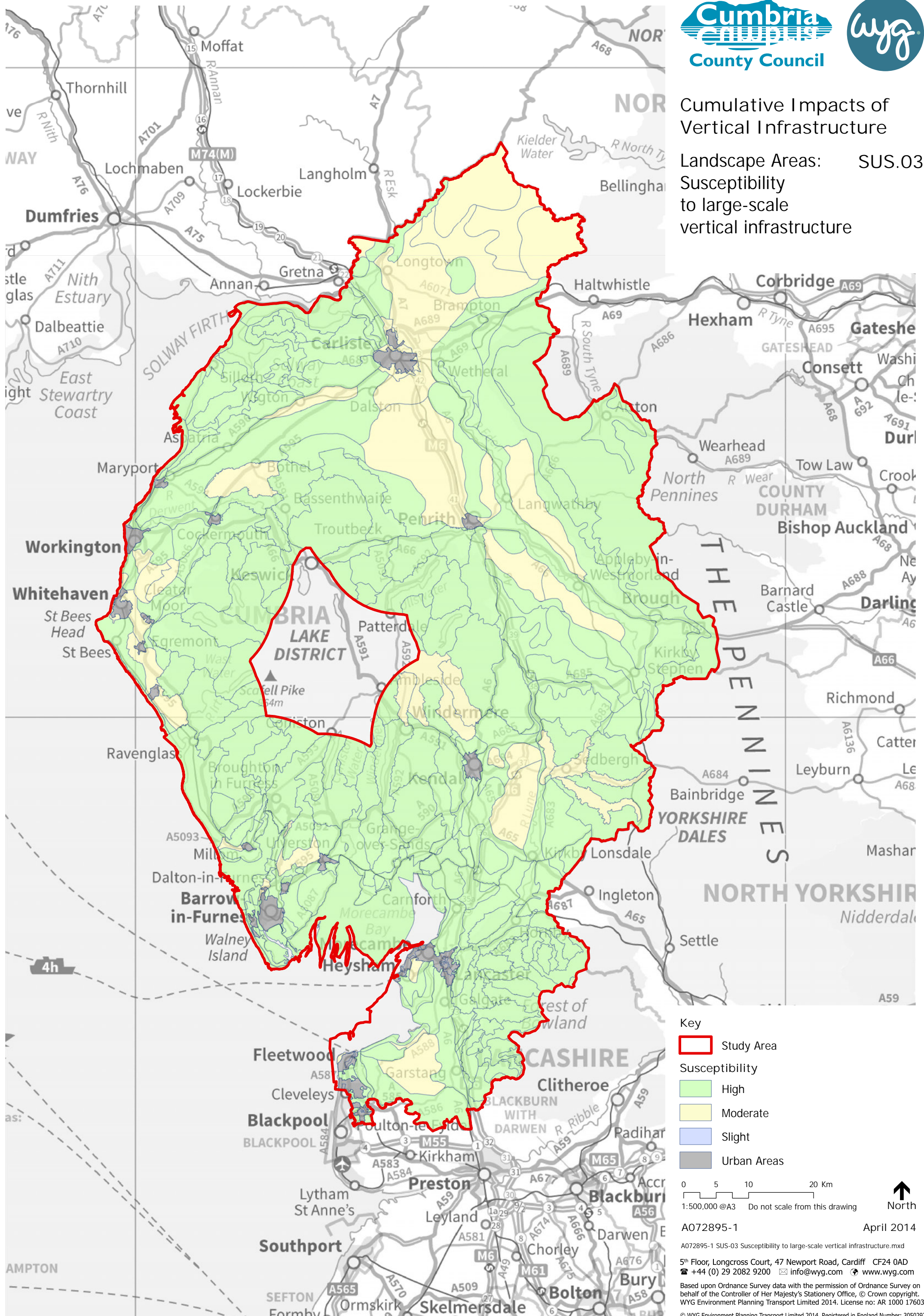


Landscape Areas: SUS.02  
Susceptibility  
to medium-scale  
vertical infrastructure





Landscape Areas: SUS.03  
Susceptibility  
to large-scale  
vertical infrastructure







## Cumulative Impacts of Vertical Infrastructure

Visual Receptors: SUS.04  
Susceptibility to all scales of vertical infrastructure - Settlements

**Key**

  Study Area

**Susceptibility**

  High

  Moderate

  Slight

0 5 10 20 Km  
1:500,000 @A3 Do not scale from this drawing



A072895-1 April 2014

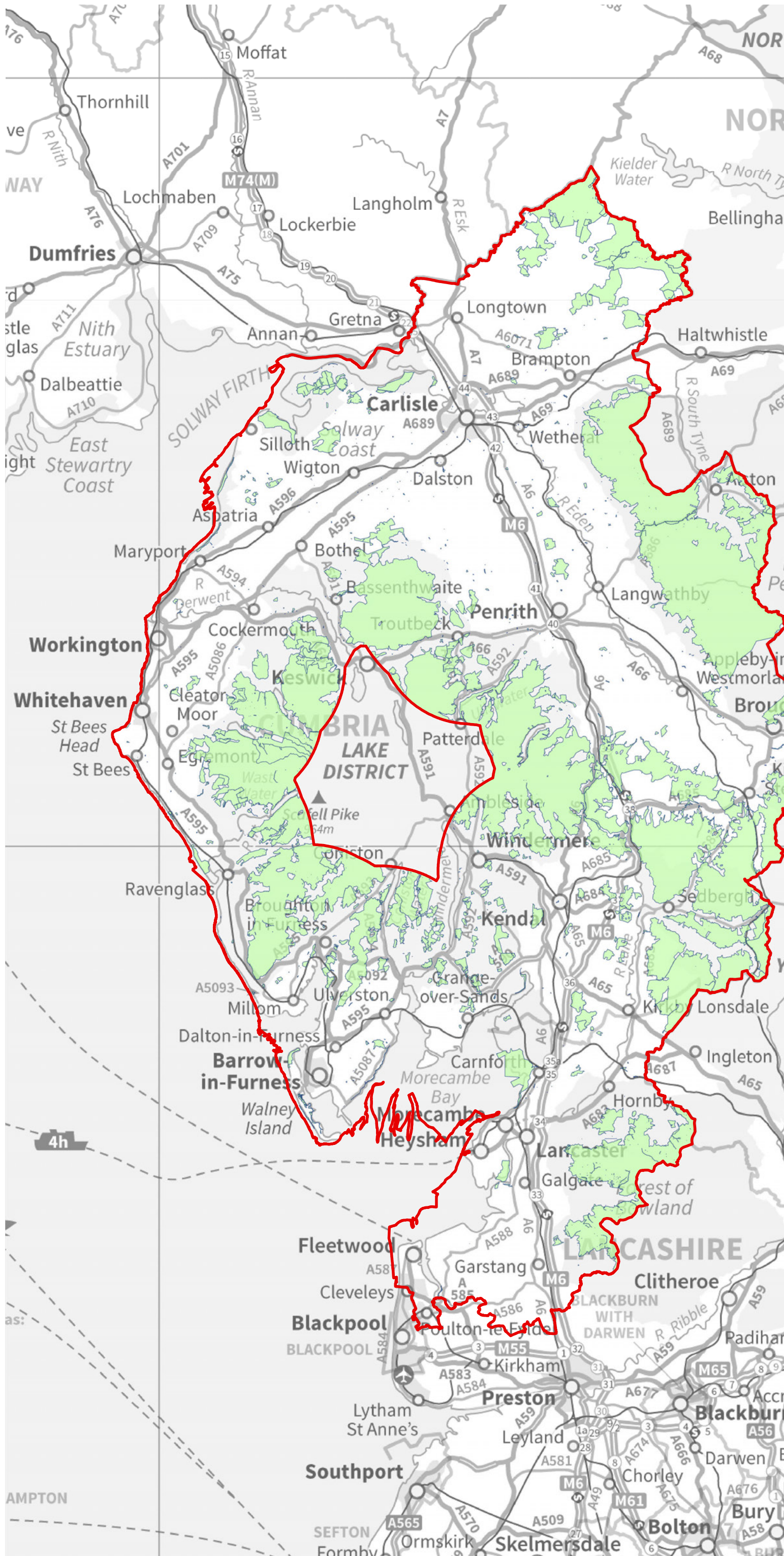
A072895-1 SUS-04 Susceptibility to vertical infrastructure - Settlements.mxd

5th Floor, Longcross Court, 47 Newport Road, Cardiff CF24 0AD  
+44 (0) 29 2082 9200 info@wyg.com www.wyg.com

Based upon Ordnance Survey data with the permission of Ordnance Survey on behalf of the Controller of Her Majesty's Stationery Office, © Crown copyright. WYG Environment Planning Transport Limited 2014. License no: AR 1000 17603

© WYG Environment Planning Transport Limited 2014. Registered in England Number: 3050297





## Cumulative Impacts of Vertical Infrastructure

Visual Receptors: SUS.05  
Susceptibility to all scales of vertical infrastructure - CROW Access Land

Key  
Study Area  
Susceptibility  
High  
Moderate  
Slight

0 5 10 20 Km  
1:500,000 @A3 Do not scale from this drawing

North

A072895-1 April 2014

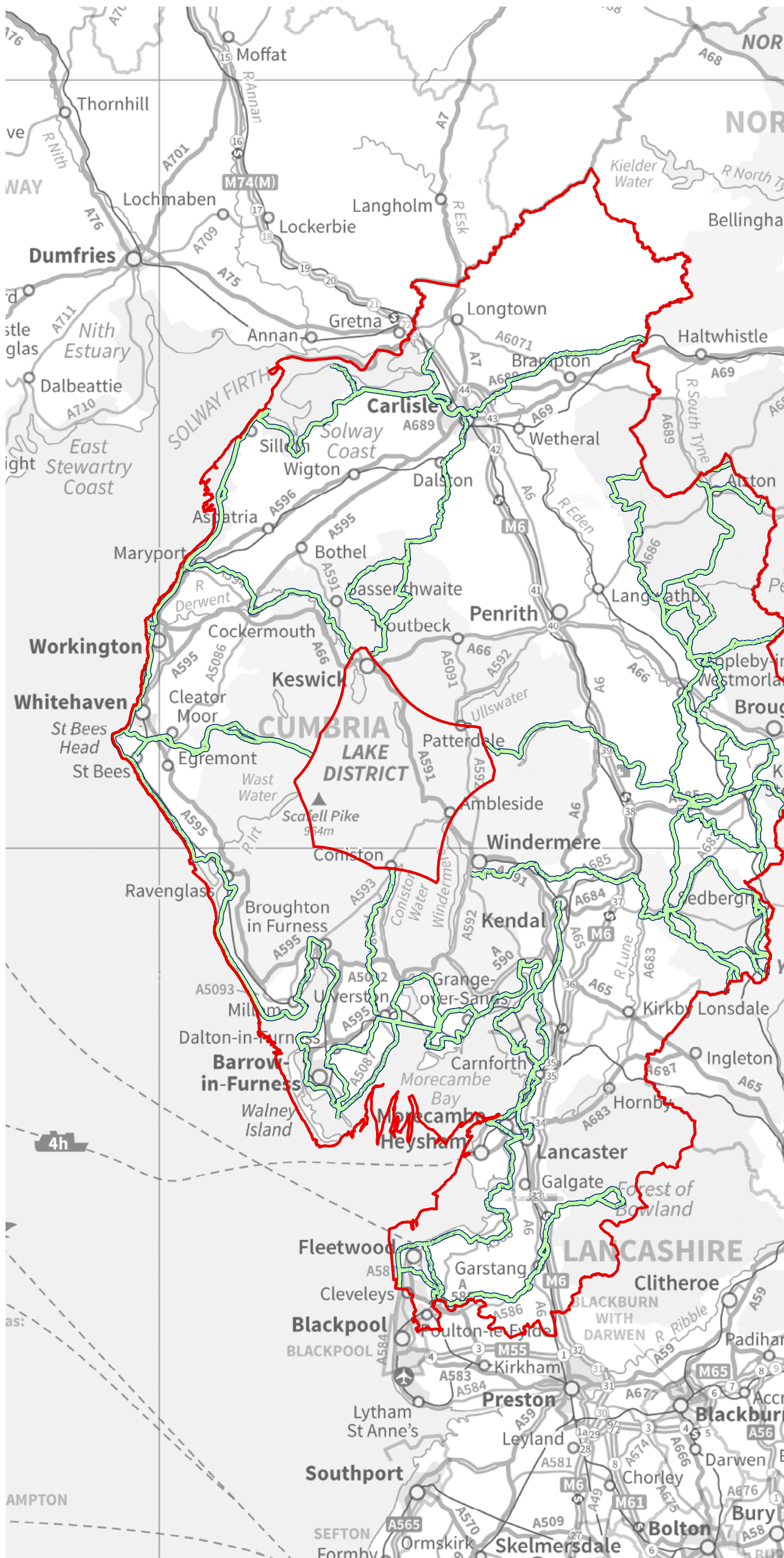
A072895-1 SUS-05 Susceptibility to vertical infrastructure - CROW Access Land.mxd

5th Floor, Longcross Court, 47 Newport Road, Cardiff CF24 0AD  
+44 (0) 29 2082 9200 info@wyg.com www.wyg.com

Based upon Ordnance Survey data with the permission of Ordnance Survey on behalf of the Controller of Her Majesty's Stationery Office, © Crown copyright. WYG Environment Planning Transport Limited 2014. License no: AR 1000 17603

© WYG Environment Planning Transport Limited 2014. Registered in England Number: 3050297





## Cumulative Impacts of Vertical Infrastructure

Visual Receptors: SUS.06  
Susceptibility to all scales of vertical infrastructure - Long Distance Footpaths

Key  
Study Area  
Susceptibility  
High  
Moderate  
Slight

0 5 10 20 Km  
1:500,000 @A3 Do not scale from this drawing  
North

A072895-1 April 2014

A072895-1 SUS-06 Susceptibility to vertical infrastructure - Long Distance Footpaths

5th Floor, Longcross Court, 47 Newport Road, Cardiff CF24 0AD  
+44 (0) 29 2082 9200 info@wyg.com www.wyg.com

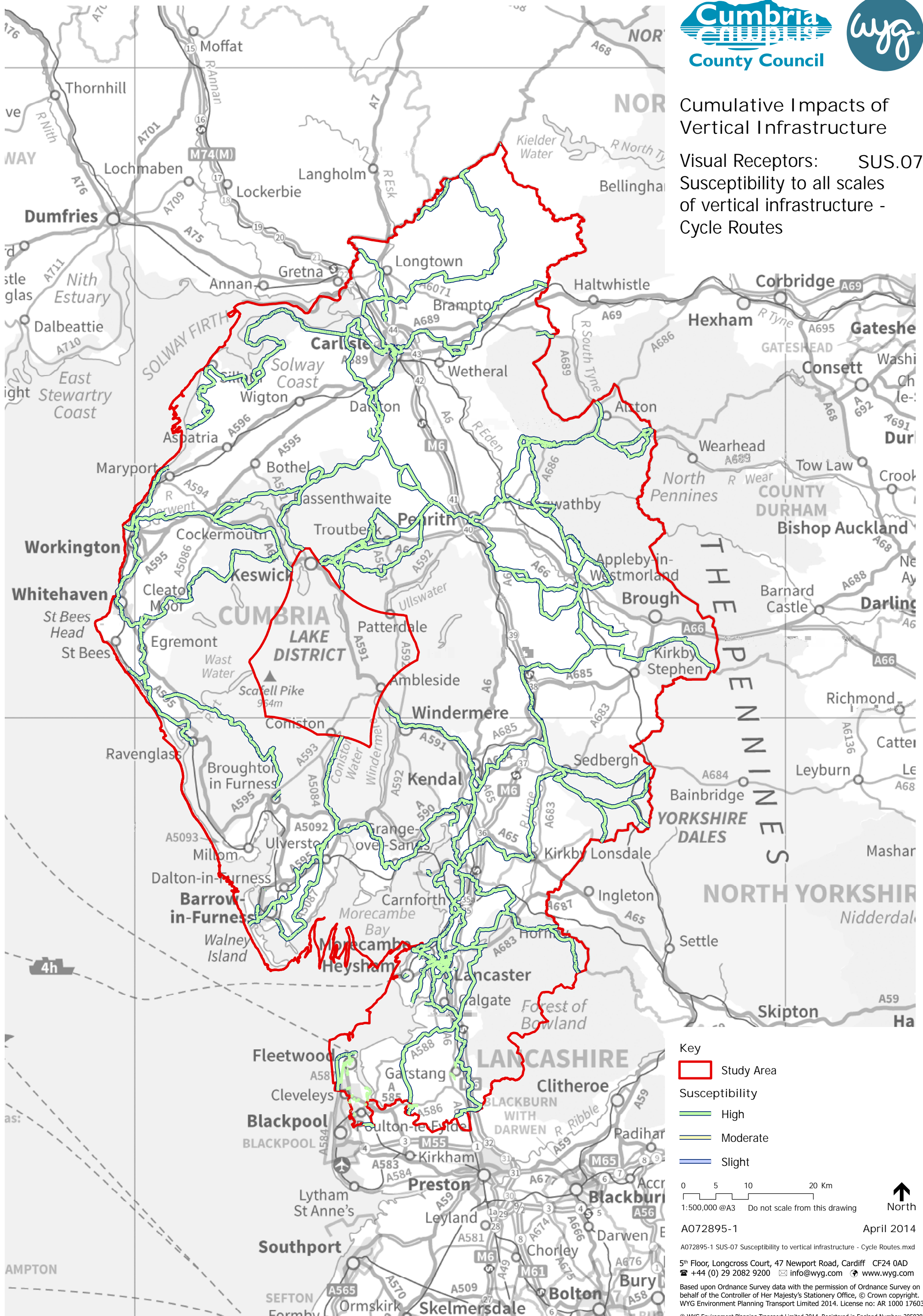
Based upon Ordnance Survey data with the permission of Ordnance Survey on behalf of the Controller of Her Majesty's Stationery Office, © Crown copyright. WYG Environment Planning Transport Limited 2014. License no: AR 1000 17603

© WYG Environment Planning Transport Limited 2014. Registered in England Number: 3050297



# Cumulative Impacts of Vertical Infrastructure

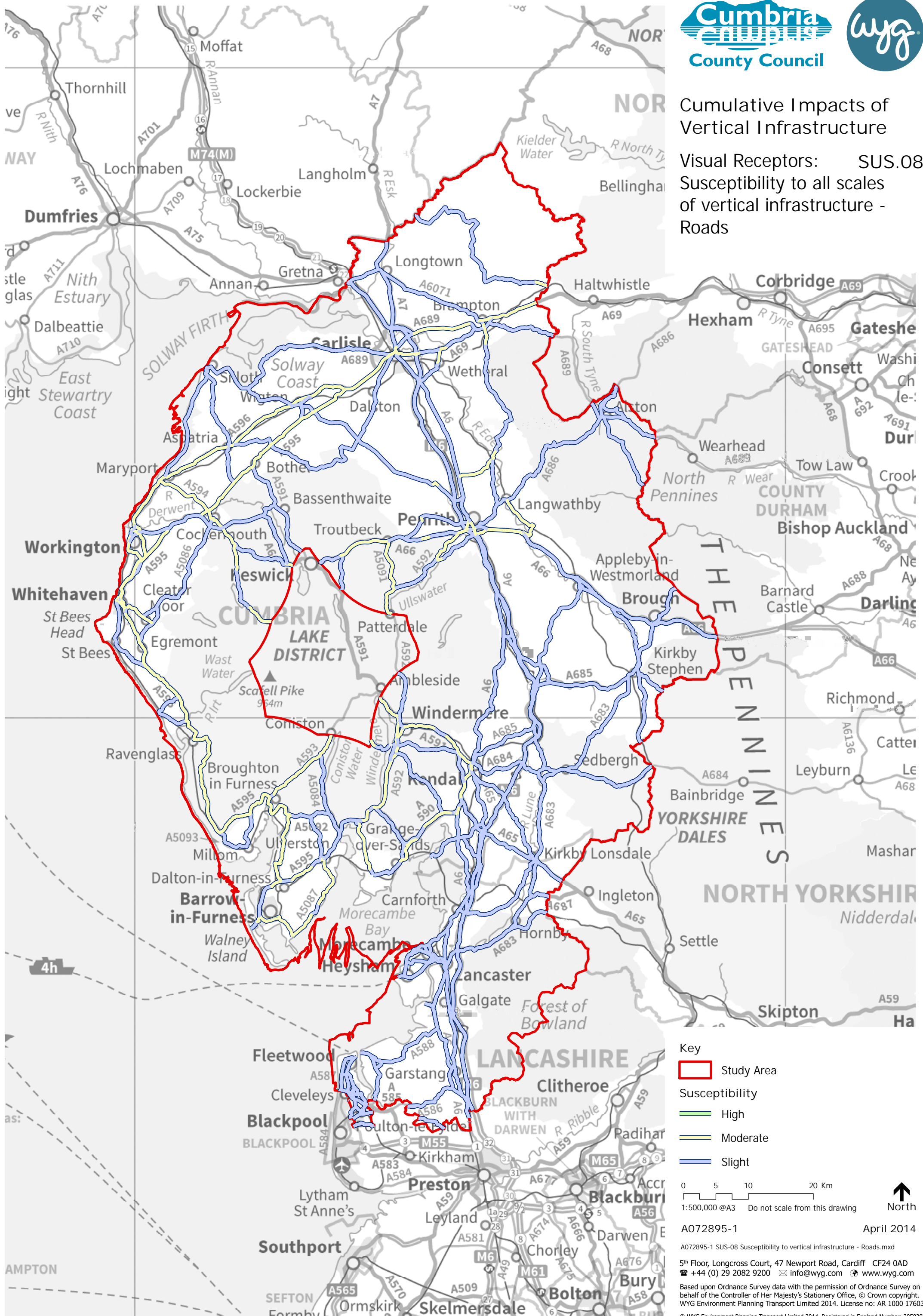
Visual Receptors: SUS.07  
Susceptibility to all scales of vertical infrastructure - Cycle Routes



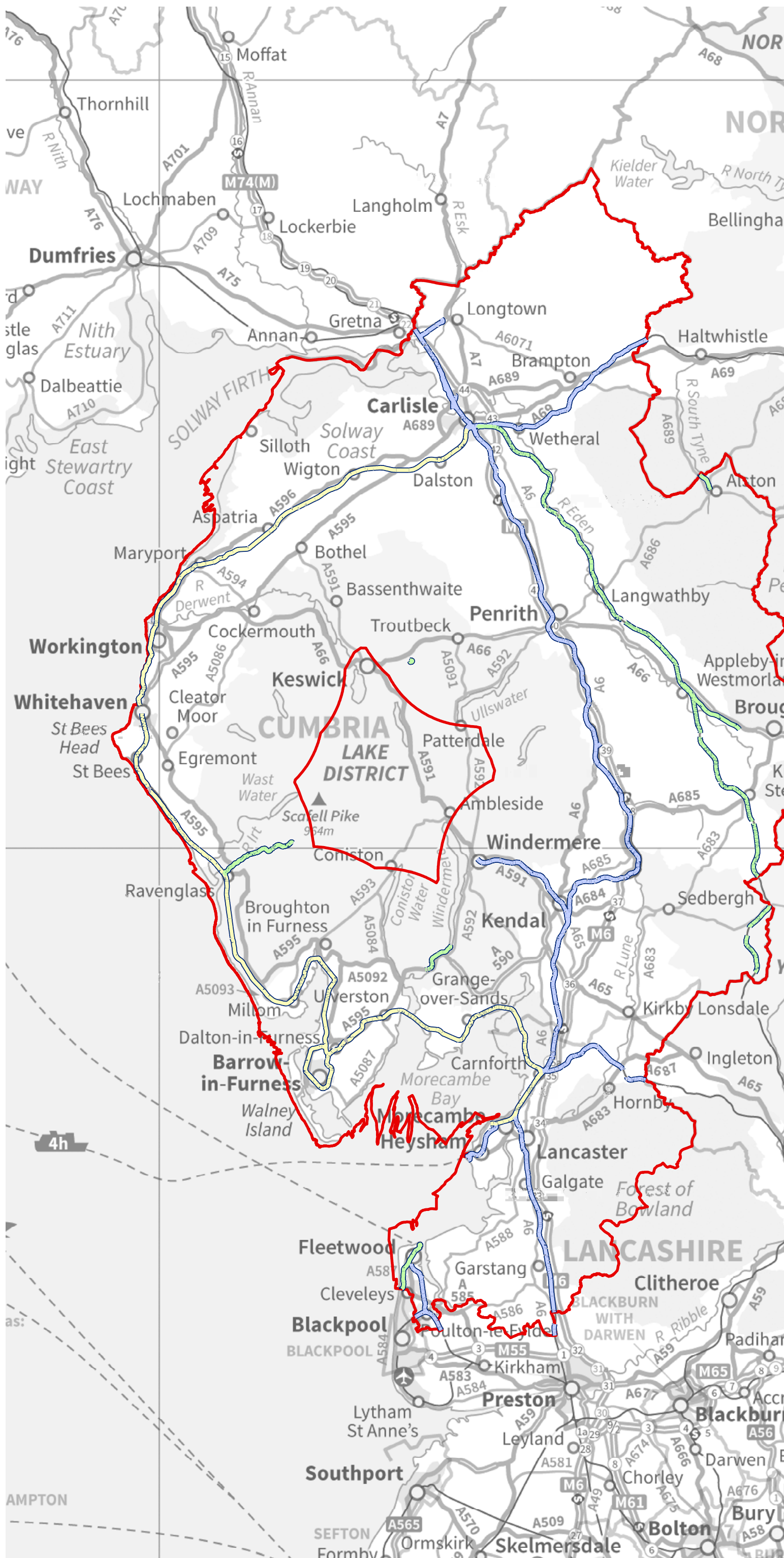


# Cumulative Impacts of Vertical Infrastructure

Visual Receptors: SUS.08  
Susceptibility to all scales of vertical infrastructure - Roads







Cumulative Impacts of  
Vertical Infrastructure

Visual Receptors: SUS.09  
Susceptibility to all scales  
of vertical infrastructure -  
Railways

Key  
Study Area  
Susceptibility  
High  
Moderate  
Slight

0 5 10 20 Km  
1:500,000 @A3 Do not scale from this drawing  
North

A072895-1 April 2014

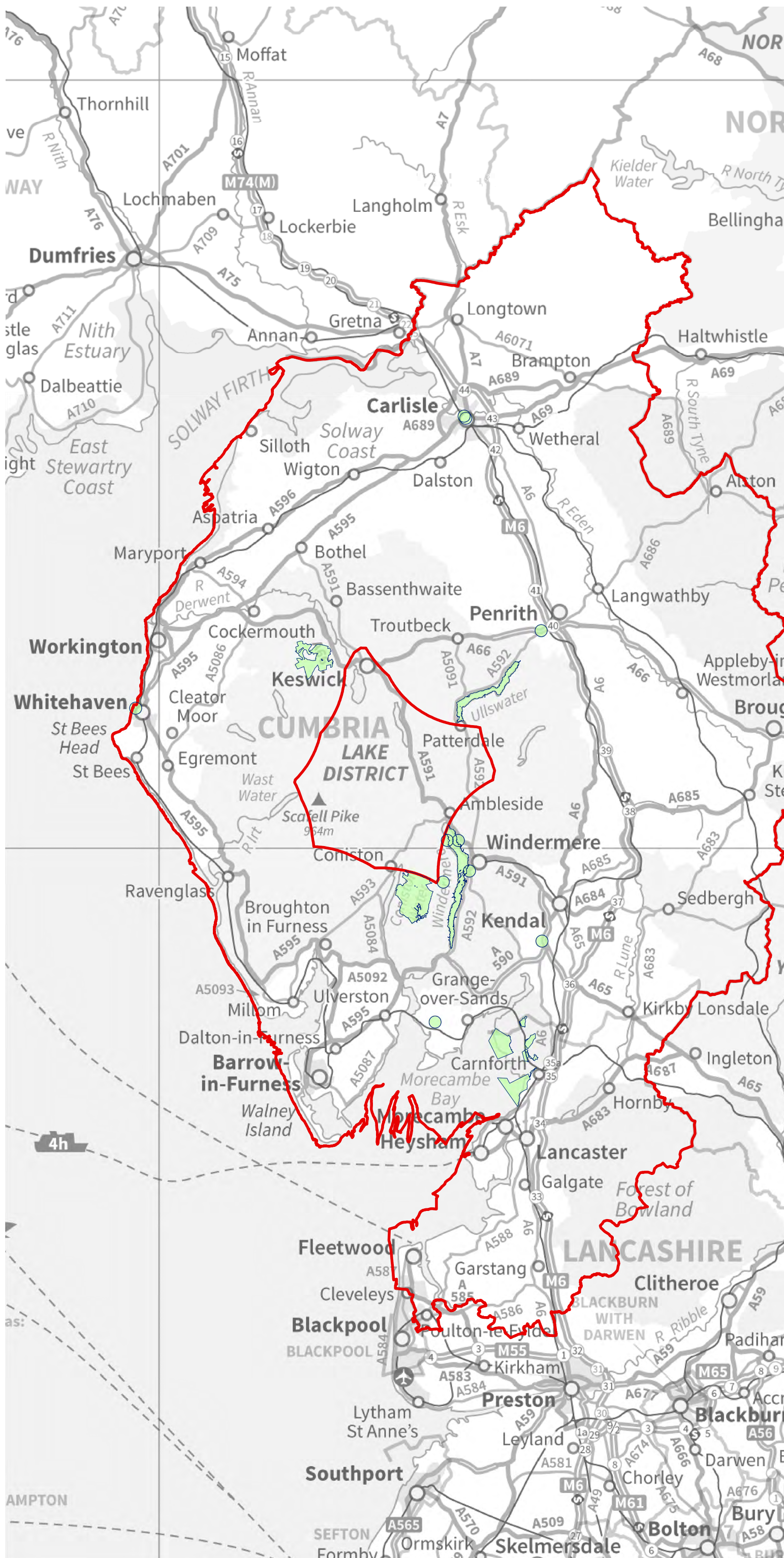
A072895-1 SUS-09 Susceptibility to vertical infrastructure - Railways.mxd

5<sup>th</sup> Floor, Longcross Court, 47 Newport Road, Cardiff CF24 0AD  
☎ +44 (0) 29 2082 9200 ✉ info@wyg.com 🌐 www.wyg.com

Based upon Ordnance Survey data with the permission of Ordnance Survey on  
behalf of the Controller of Her Majesty's Stationery Office, © Crown copyright.  
WYG Environment Planning Transport Limited 2014. License no: AR 1000 17603

© WYG Environment Planning Transport Limited 2014. Registered in England Number: 3050297





## Cumulative Impacts of Vertical Infrastructure

Visual Receptors: SUS.10  
Susceptibility to all scales of vertical infrastructure - Tourist Attractions

Key

Study Area

Susceptibility

- High
- Moderate
- Slight

0 5 10 20 Km  
1:500,000 @A3 Do not scale from this drawing

North